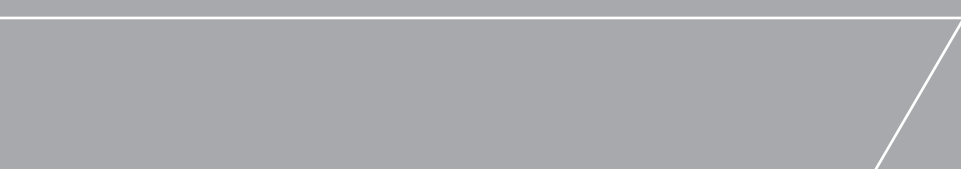
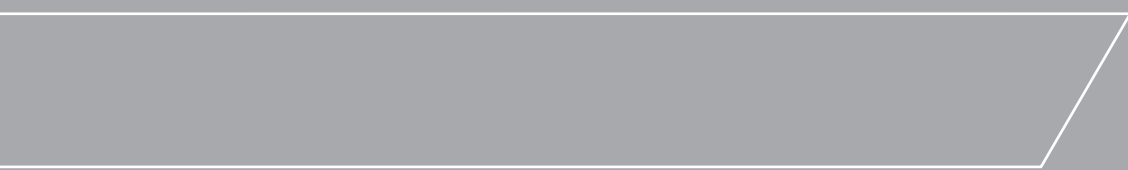


MANUALE  
TECNICO

F68M

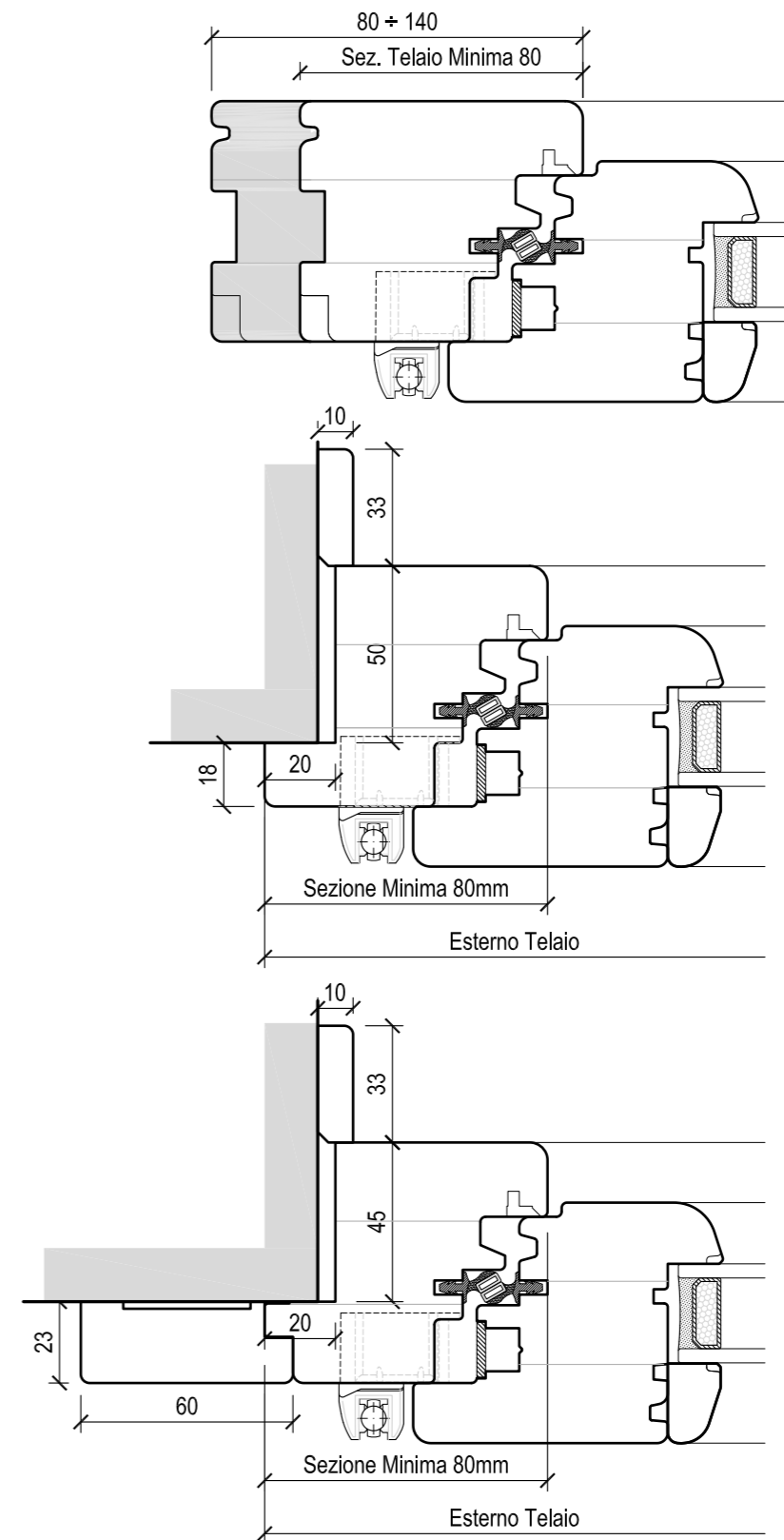
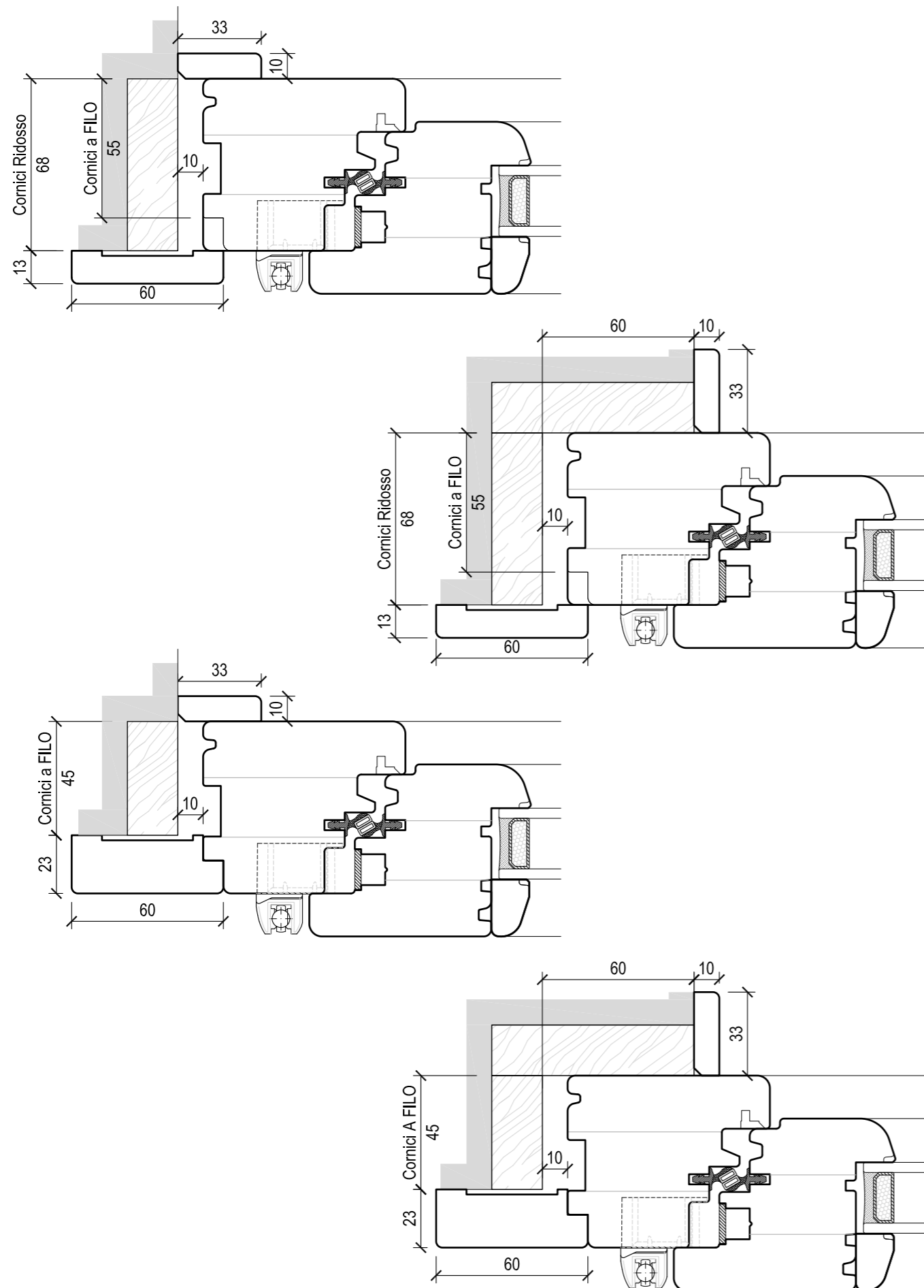


## CAPITOLATO

Finestre e portefinestre per esterni, realizzate mediante profili in legno lamellare, conforme alla Classe D4 per la resistenza delle linee di colla, secondo le normative previste. Sezione Telaio spessore 68x80 mm e sezione dell'anta 68x87 mm. I profili sono uniti mediante spine cilindriche in legno per garantire una maggiore stabilità e superficie d'incollaggio a finestra assemblata. Traverso inferiore con gocciolatoio in alluminio rivestito in legno. Cornici di serie interne 60x13 esterne 33x10 realizzate in legno massello. Guarnizioni di tenuta montate a doppio anello con soluzione di continuità sia su telaio fisso che su telaio mobile, in gomma termoplastica a norme UNI 8649 contenenti magneti naturali permanenti. Tali guarnizioni, in funzione della loro reciproca attrazione, tra anello fisso e anello mobile, permettono una tenuta termoacustica ed idropneumatica illimitata. Ferramenta per la movimentazione ed apertura delle ante realizzata in acciaio e zinco pressofuso con successivo trattamento di zincatura e passivazione secondo norme DIN 50941. Tutti i componenti vengono successivamente provvisti di uno strato di cera che aumenta la protezione anticorrosione e la scorrevolezza dei singoli pezzi. Di serie apertura a ribalta con dispositivo di microventilazione. La ferramenta di portata è realizzata con cerniere regolabili tridimensionalmente per una perfetta registrazione, già comprese di coperture con guaine plastiche in vari colori. Vetrocamera da 28mm, realizzato con lastre di vetro semplici o accoppiate, unite da distanziale in alluminio. Le lastre possono essere basso emissive e nella camera può essere inserito gas argon e impiegate canaline a bordo caldo per migliorare le prestazioni termiche. La verniciatura viene realizzata in modo completamente naturale all'acqua, mediante impregnazione a flow coating, fondo a spruzzo, carteggiatura e verniciatura finale sempre a spruzzo.

# F688M

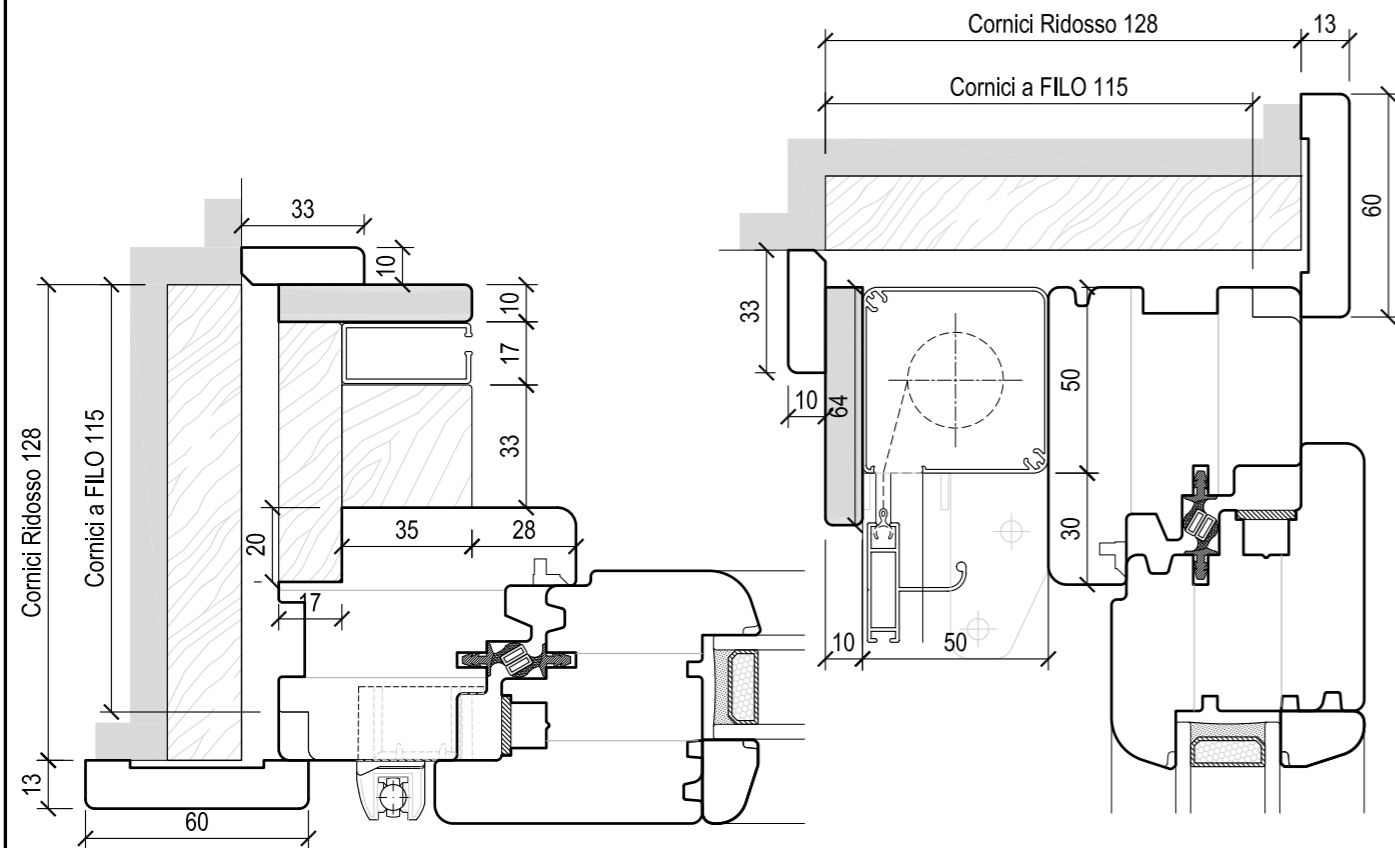
F68M



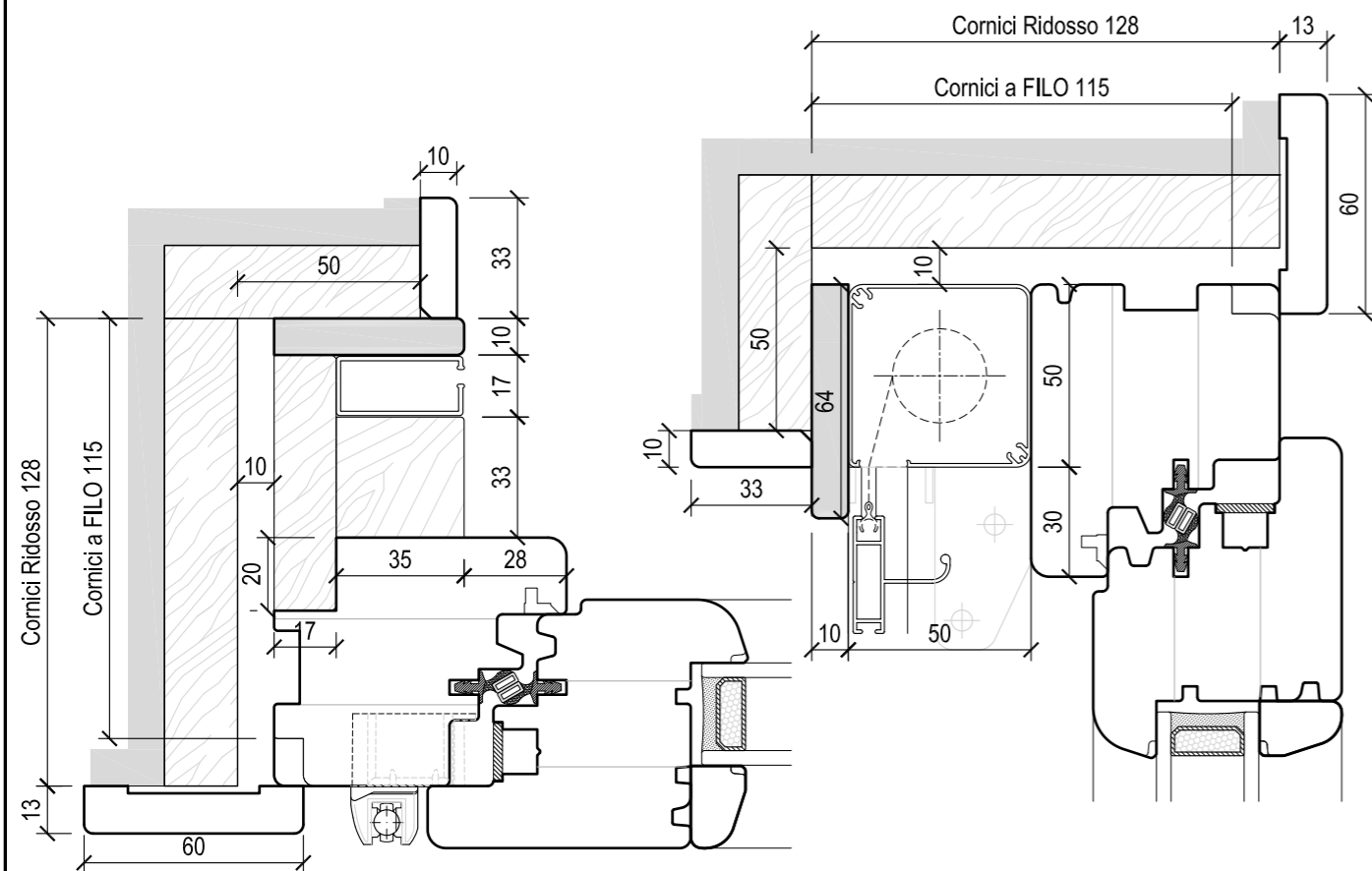
N.B. Le soluzioni sopra rappresentate sono alcuni esempi di situazioni che si possono verificare in cantiere.

È possibile studiare soluzioni differenti, con supporto dell'ufficio tecnico/commerciale.

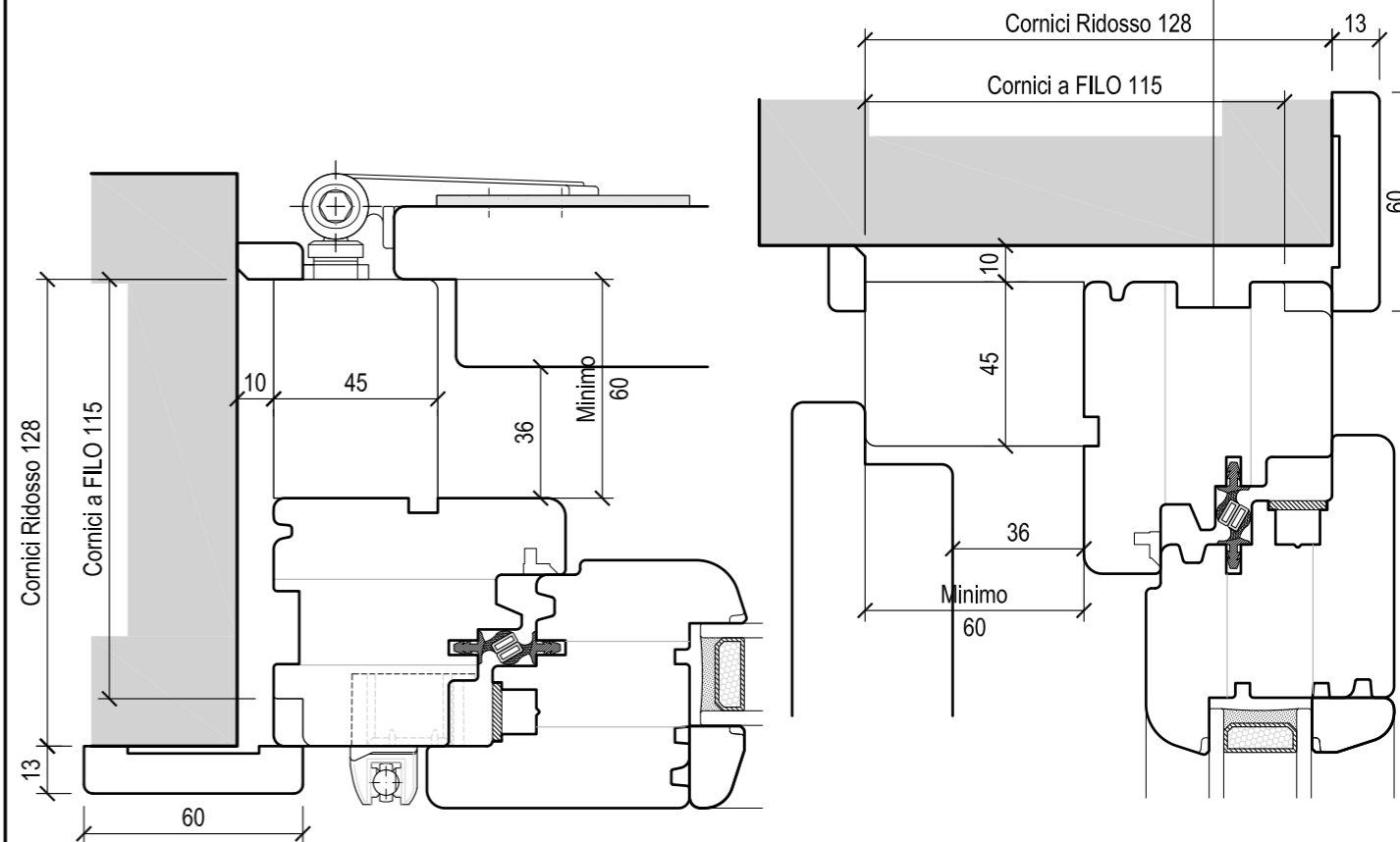
FALSO TELAIO DRITTO



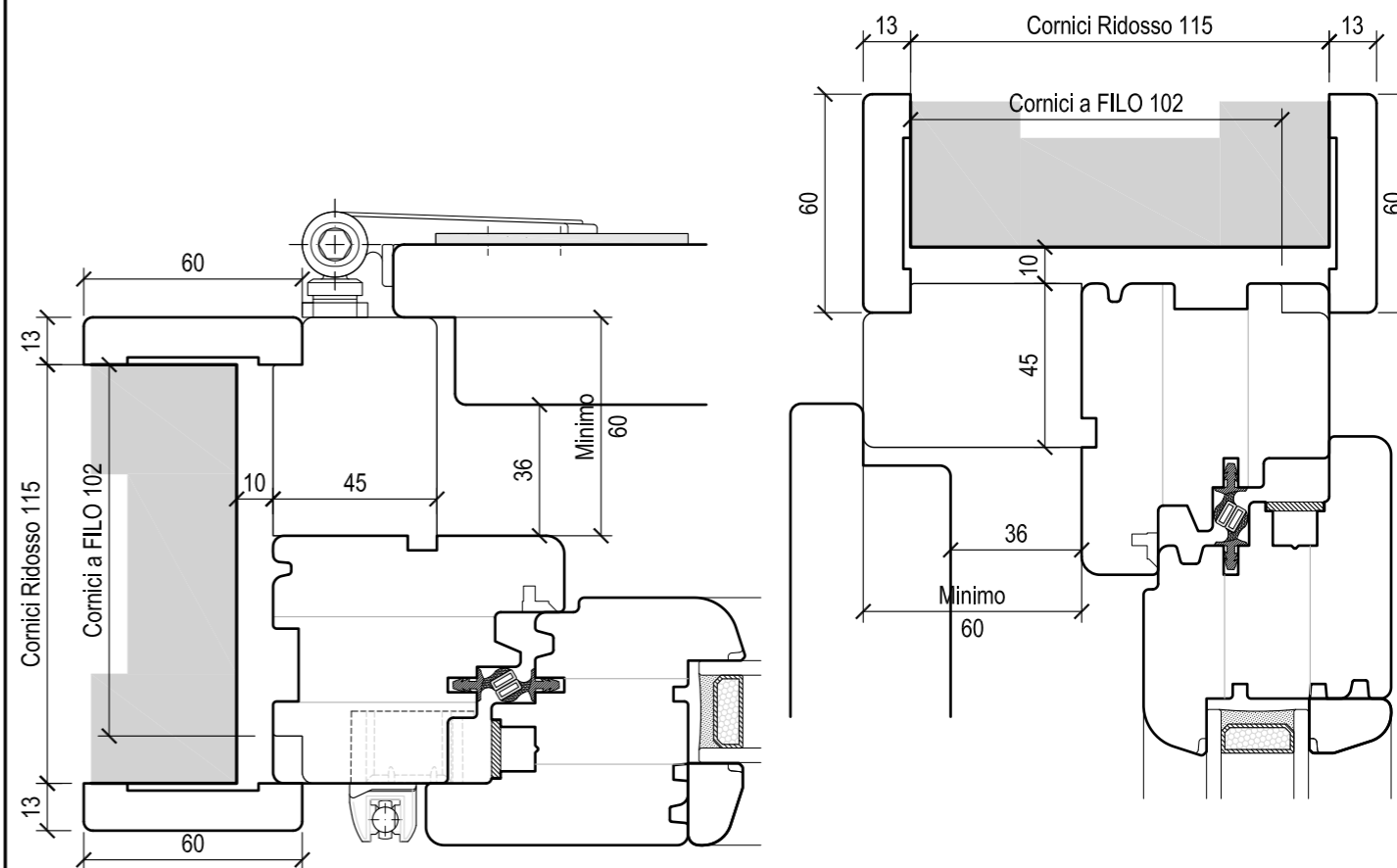
FALSO TELAIO AD "L"



MONOBLOCCO A CENTRO MURO

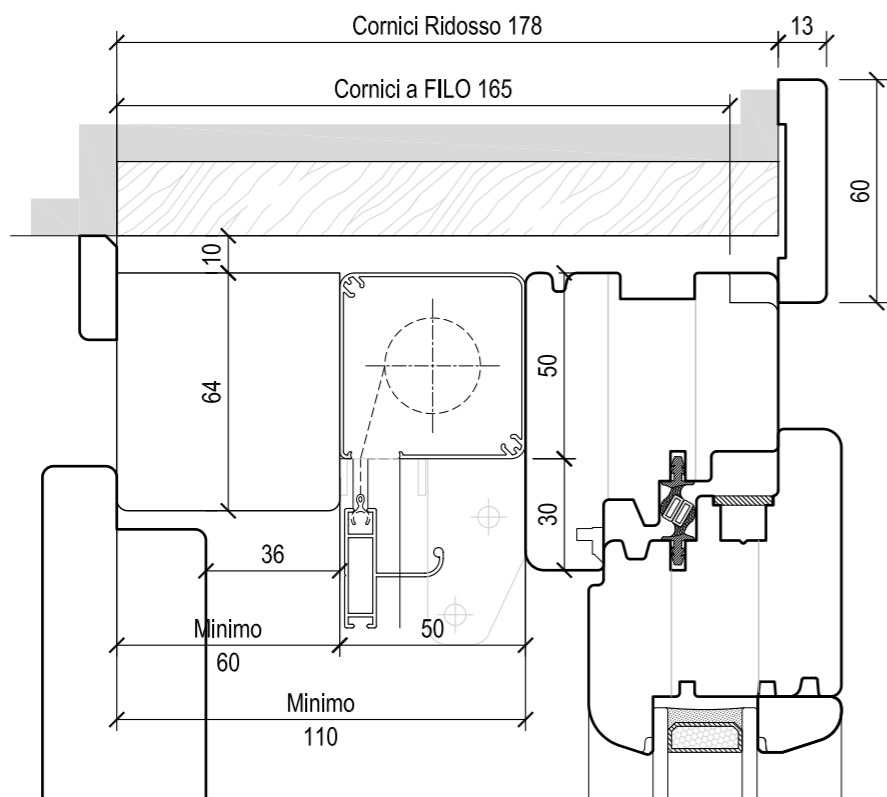
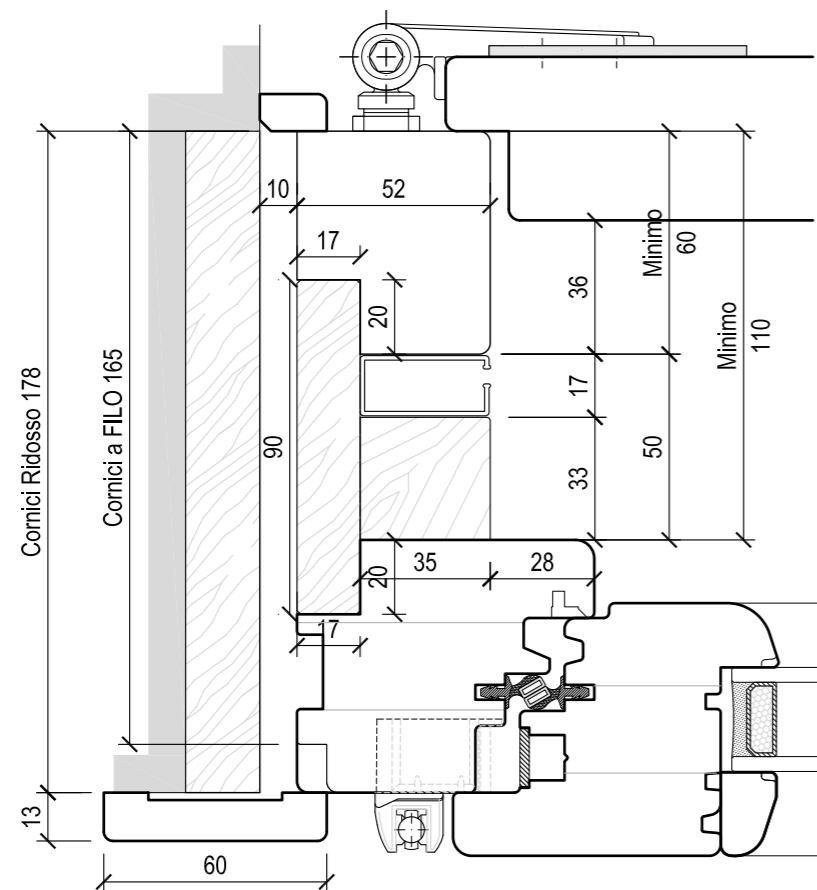


MONOBLOCCO A FILO MURO ESTERNO



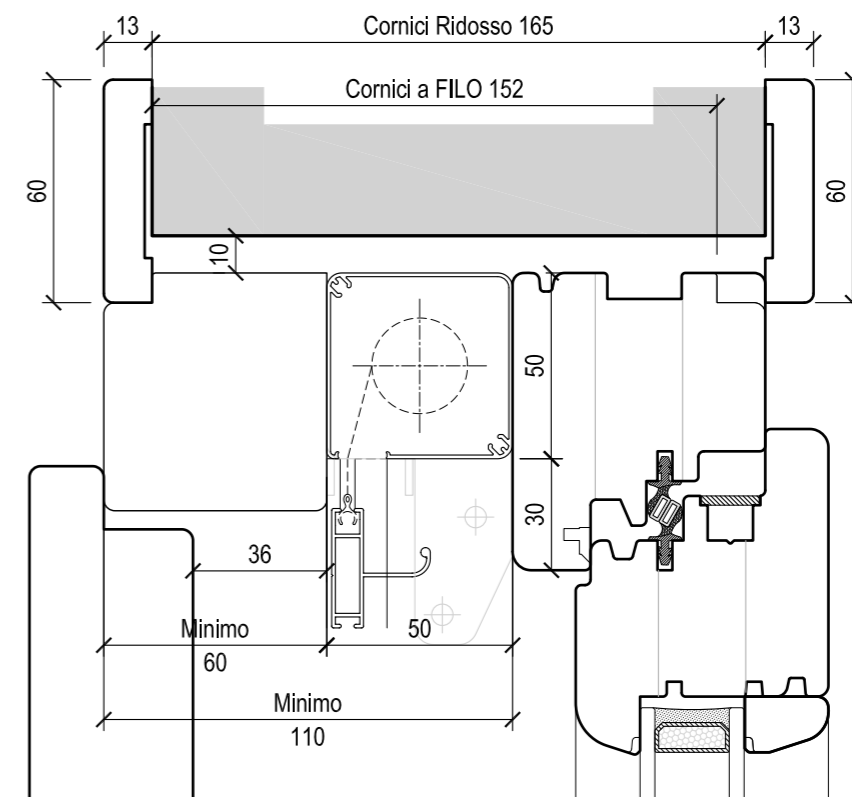
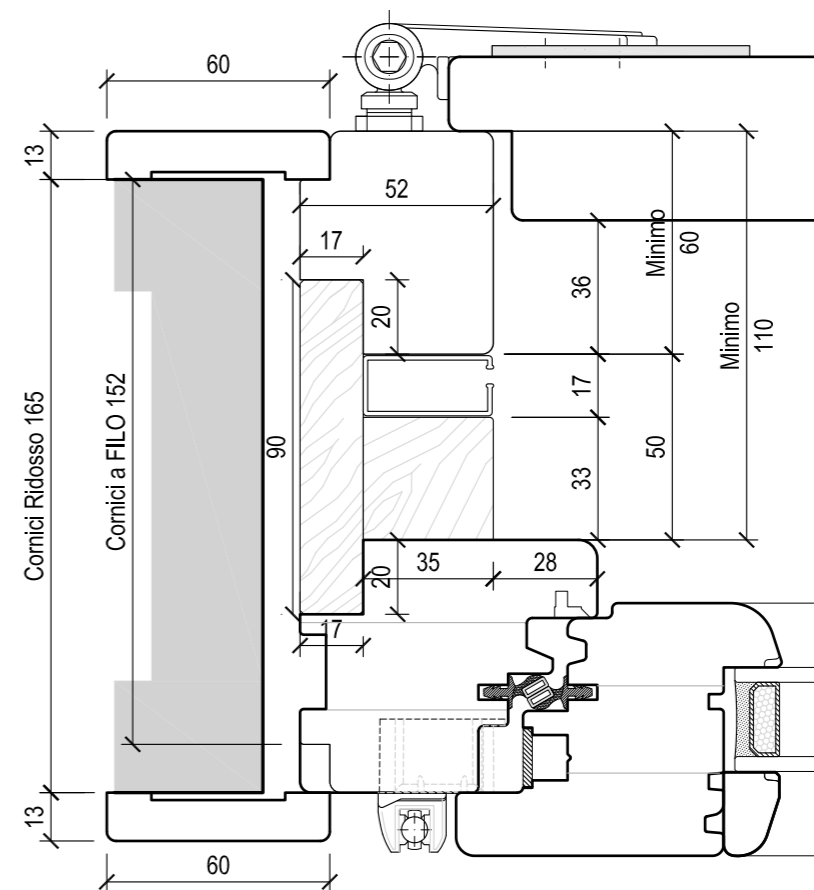
N.B. In presenza di scuro con Mottura l'imbotte va ulteriormente ringrossato di 30mm

MONOBLOCCO A CENTRO MURO

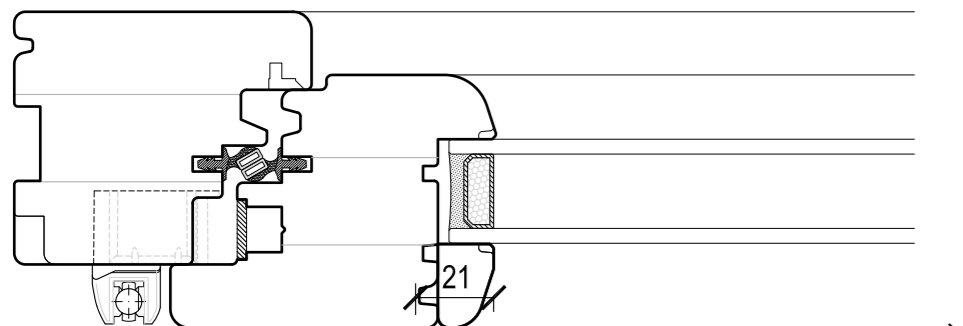


N.B. In presenza di scuro con Mottura l'imbotte va ulteriormente ringrossato di 30mm

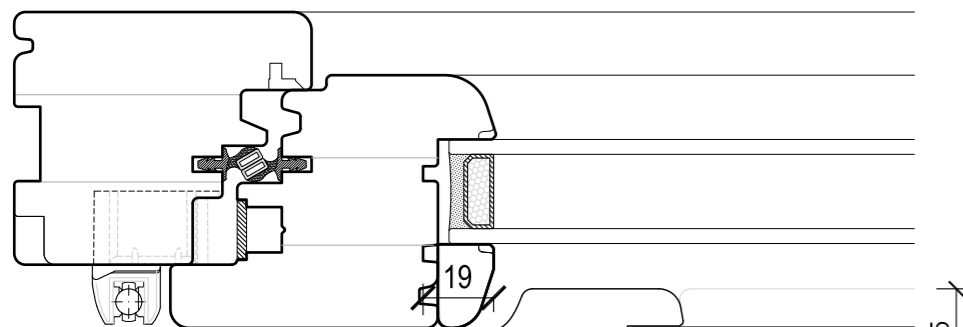
MONOBLOCCO A FILO MURO ESTERNO



N.B. In presenza di scuro con Mottura l'imbotte va ulteriormente ringrossato di 30mm

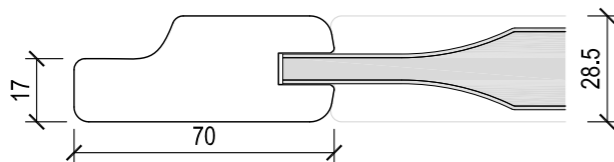


SCURETTO INTERNO  
MOD.PANNELLO LISCIO  
(Valido x Tutte le tipologie di  
Fermavetro)



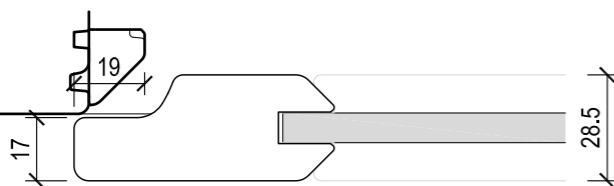
SCURETTO INTERNO  
MOD.INTELAIATO LISCIO

Sagoma Telaietto  
SCURETTO  
INTELAIATO  
su Fermavetro Sagomato  
Fermavetro Squadrato

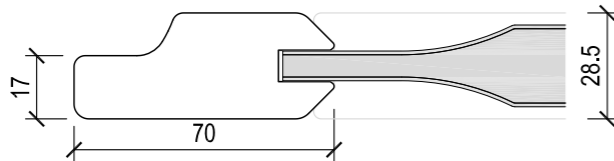


SCURETTO INTERNO  
MOD.INTELAIATO BUGNATO

Sagoma Telaietto  
SCURETTO  
INTELAIATO  
su Fermavetro Diamante

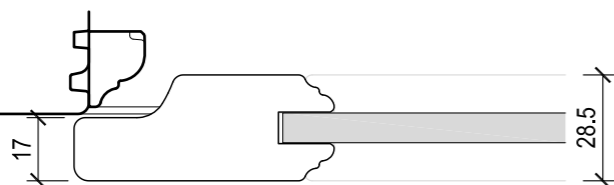


SCURETTO INTERNO  
MOD.INTELAIATO LISCIO

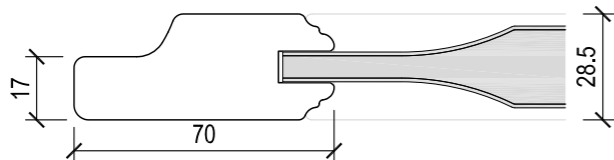


SCURETTO INTERNO  
MOD.INTELAIATO BUGNATO

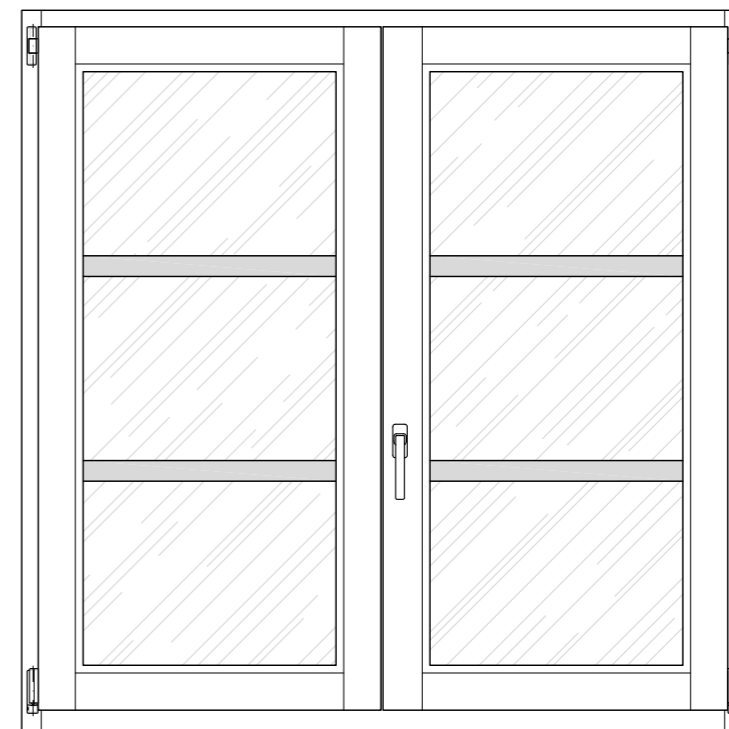
Sagoma Telaietto  
SCURETTO  
INTELAIATO  
su Fermavetro Barocco



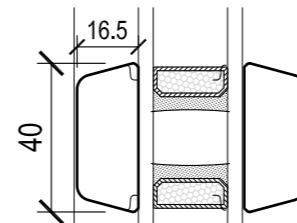
SCURETTO INTERNO  
MOD.INTELAIATO LISCIO



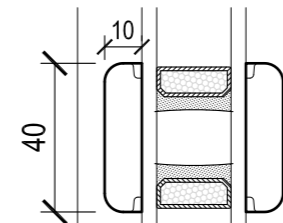
SCURETTO INTERNO  
MOD.INTELAIATO BUGNATO



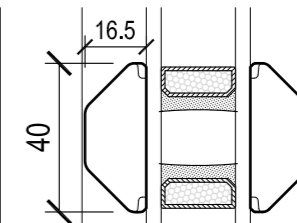
Fermavetro  
Squadrato



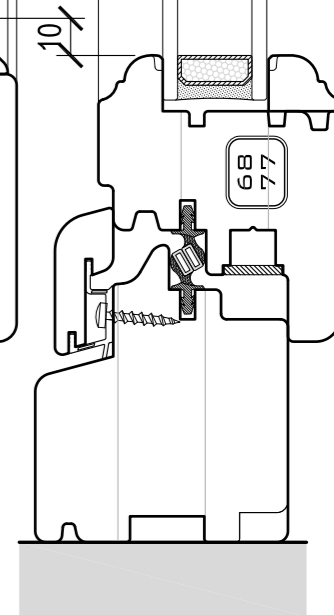
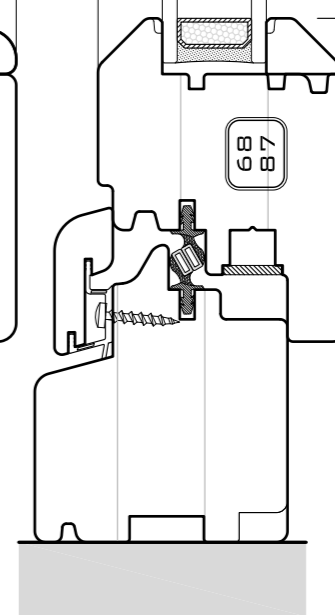
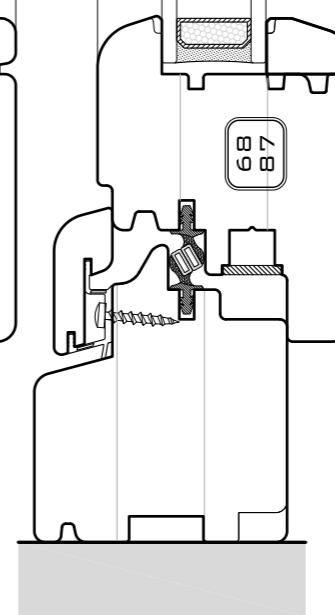
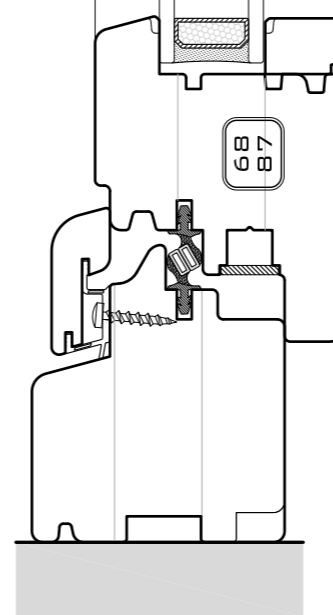
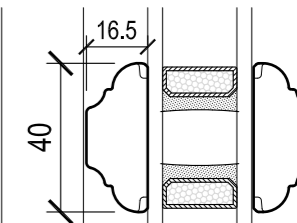
Fermavetro  
Sagomato

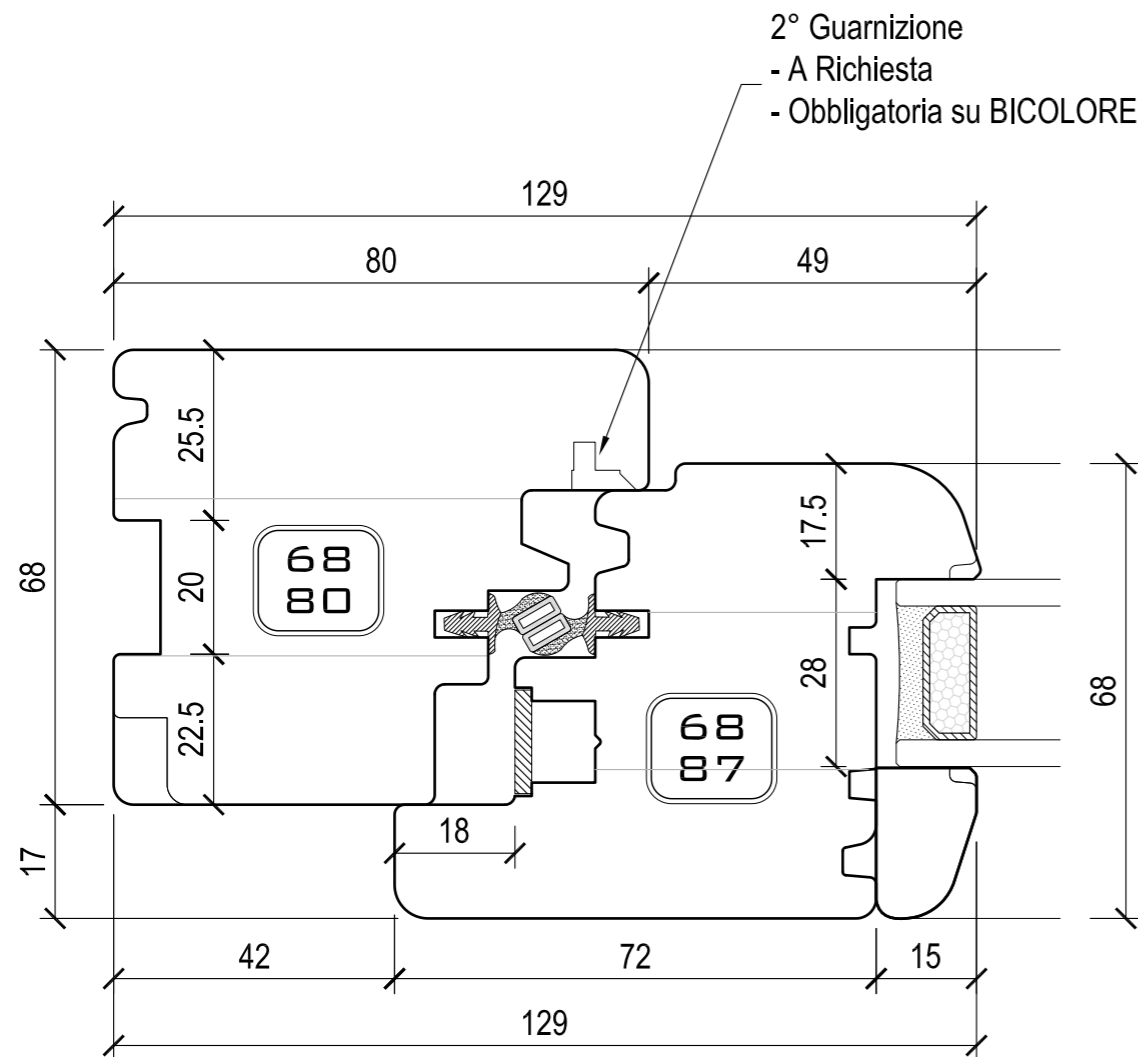


Fermavetro  
Diamante

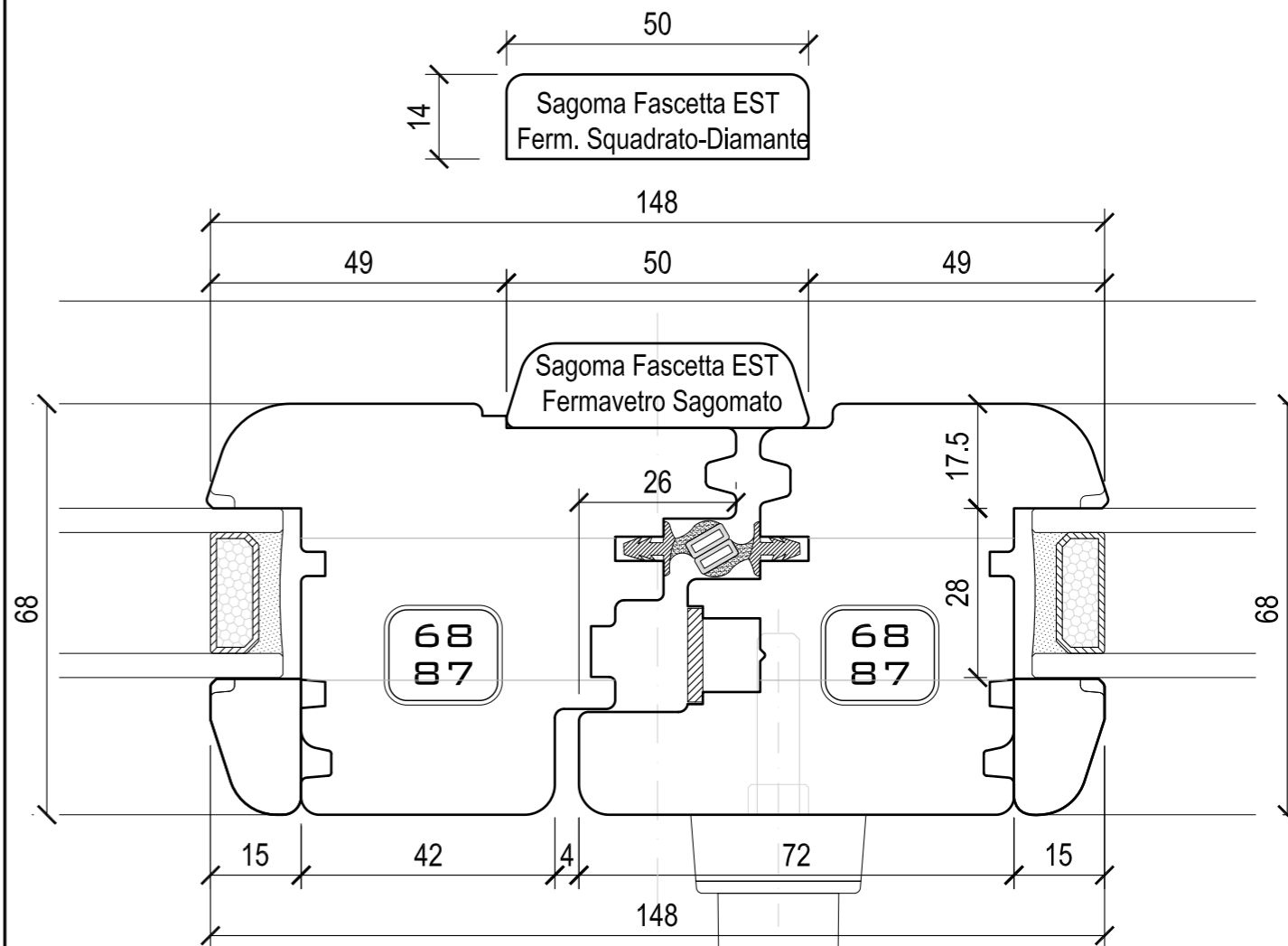
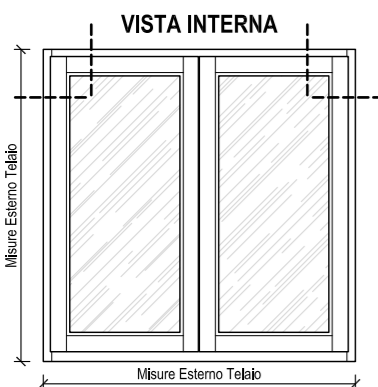
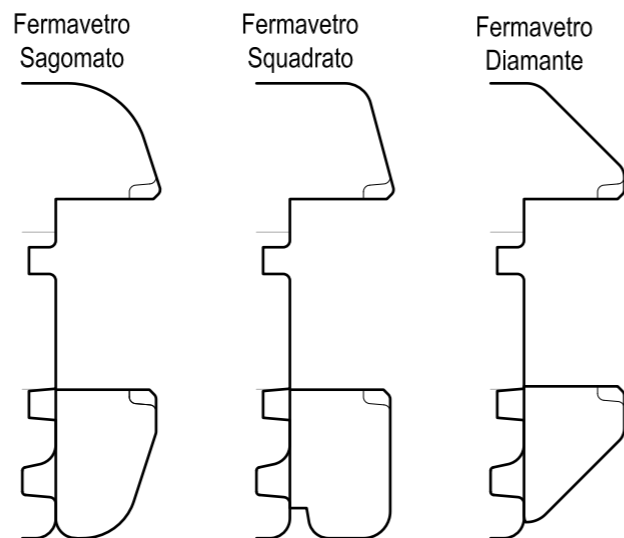


Fermavetro  
Barocco

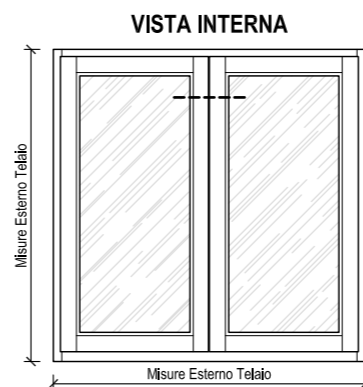
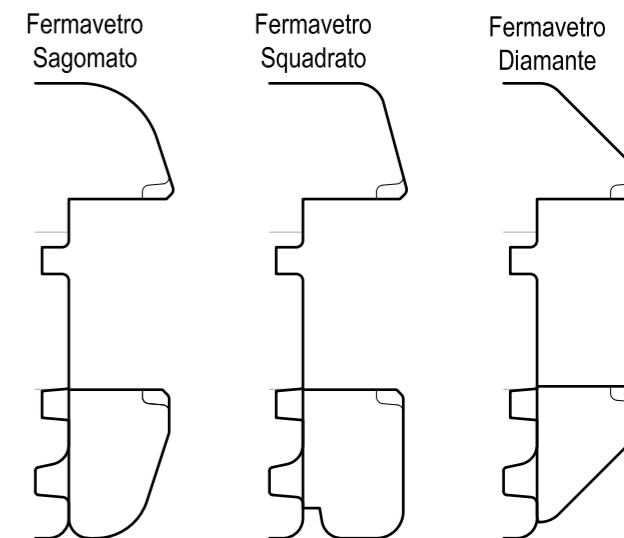


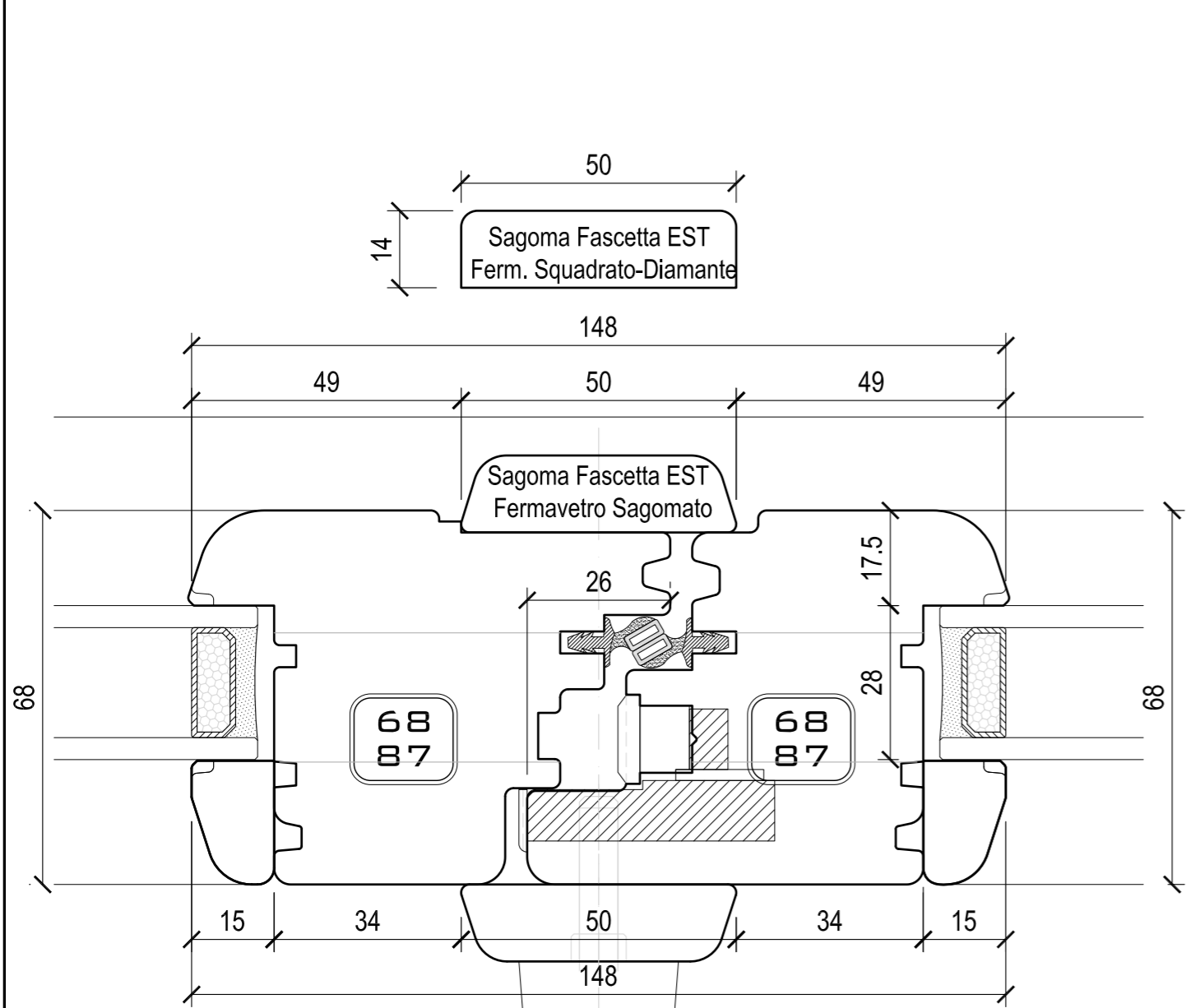


**SCELTA TIPO FERMAVETRO**

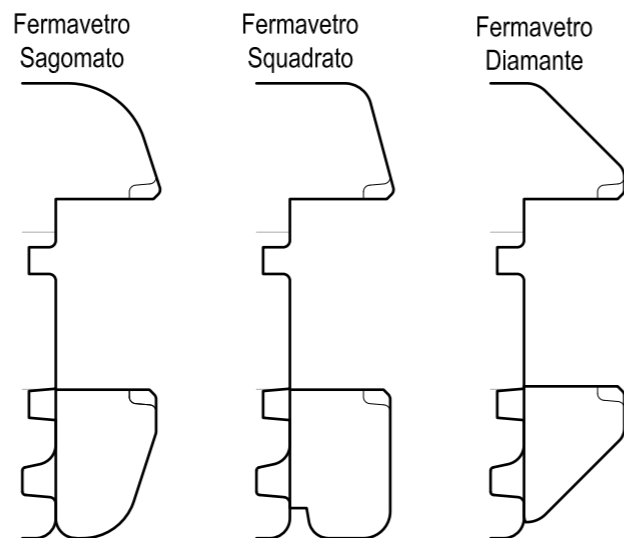


**SCELTA TIPO FERMAVETRO**

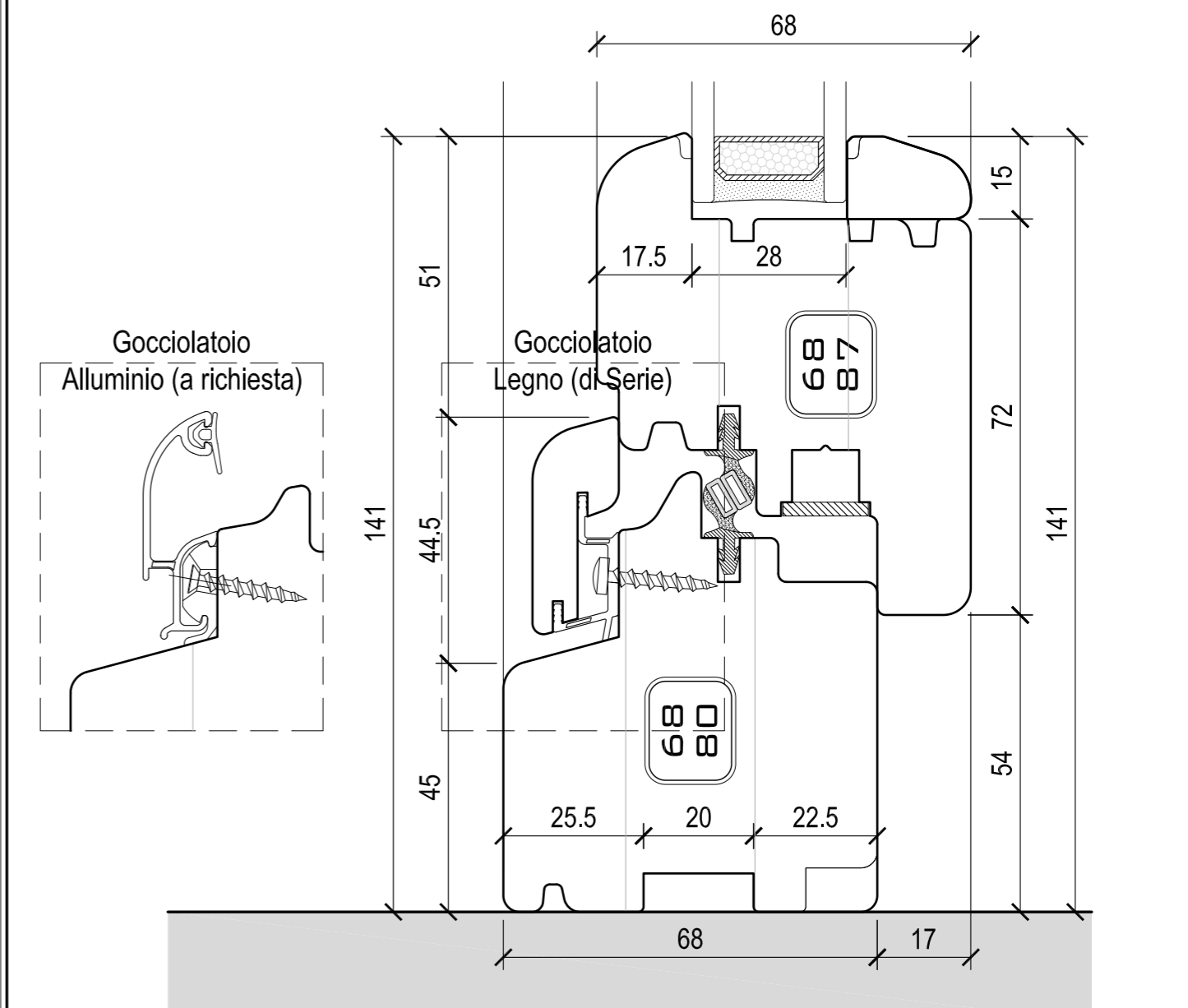
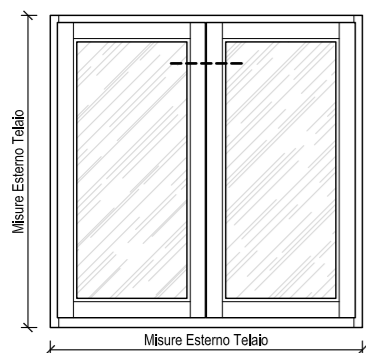




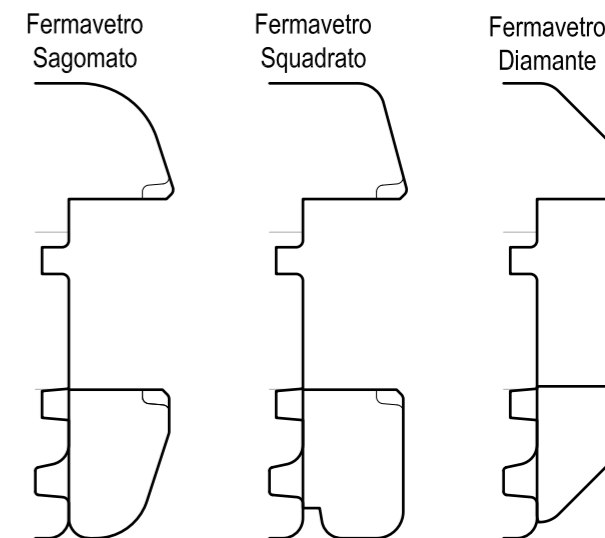
**SCELTA TIPO FERMAVETRO**



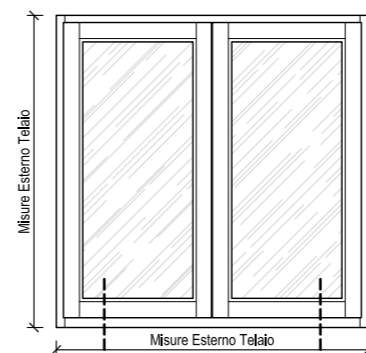
**VISTA INTERNA**

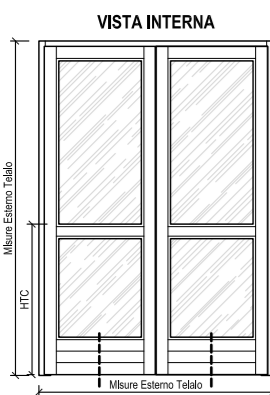
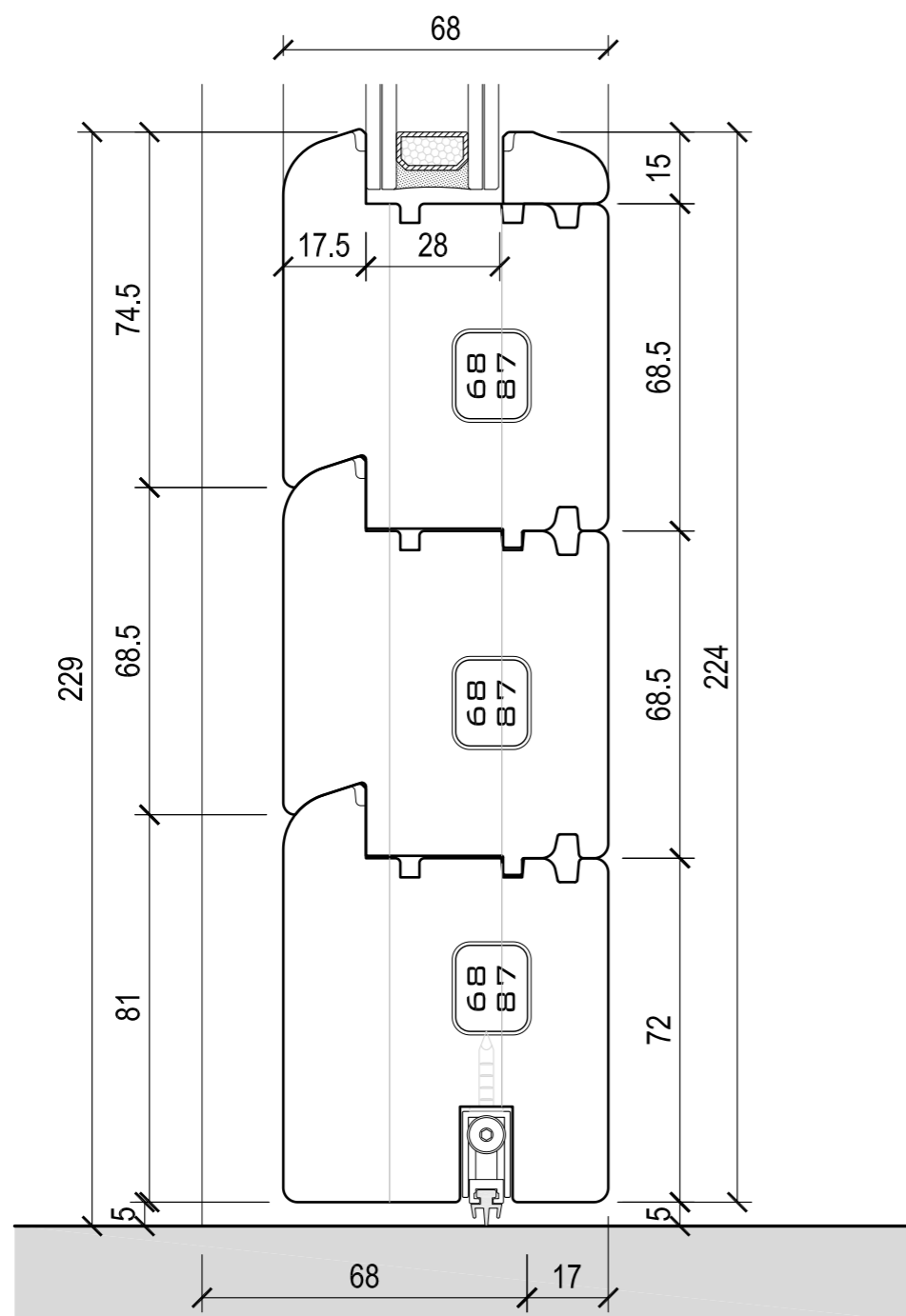


**SCELTA TIPO FERMAVETRO**

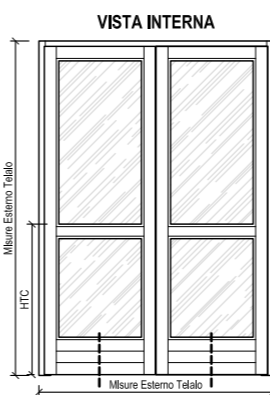
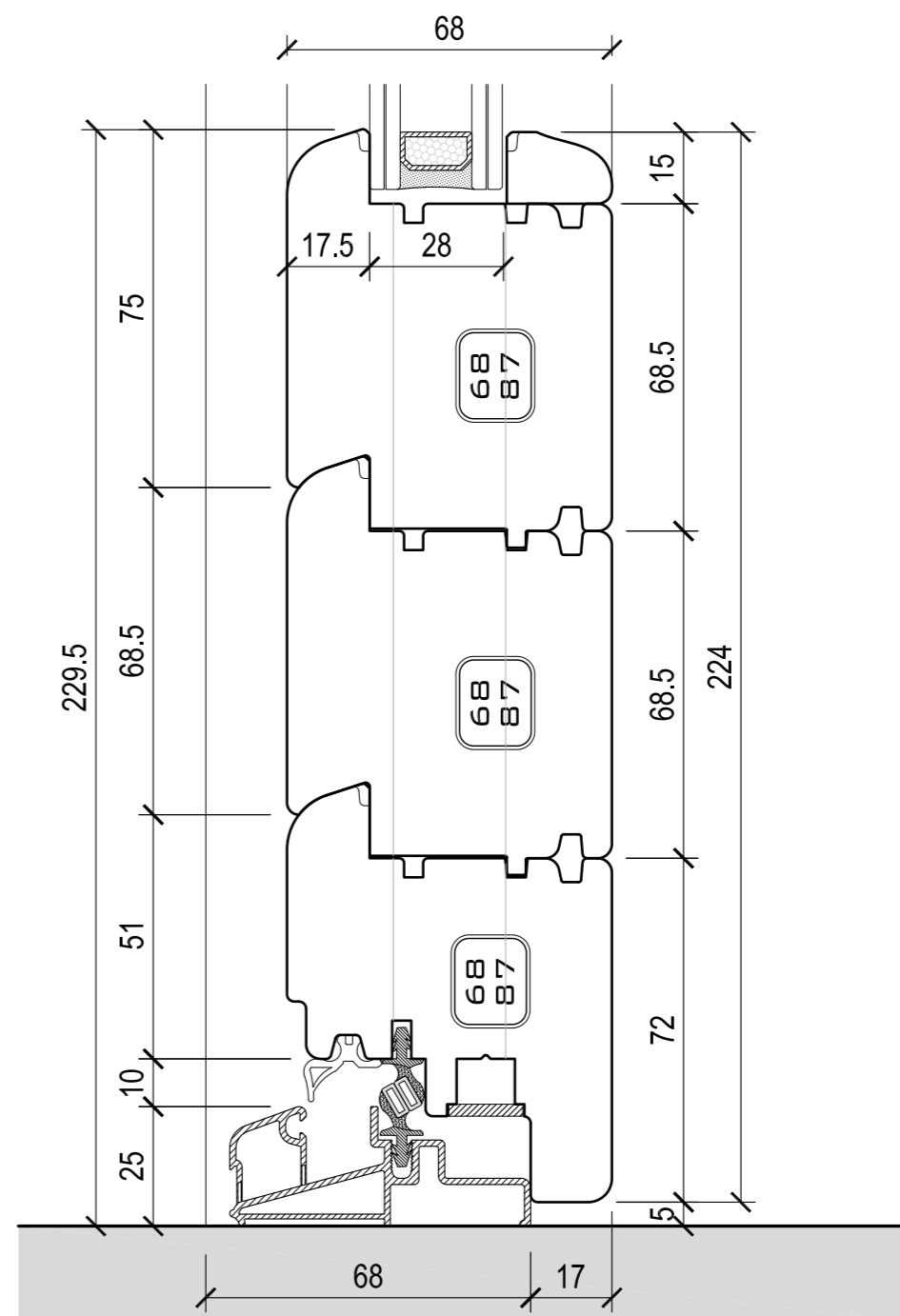
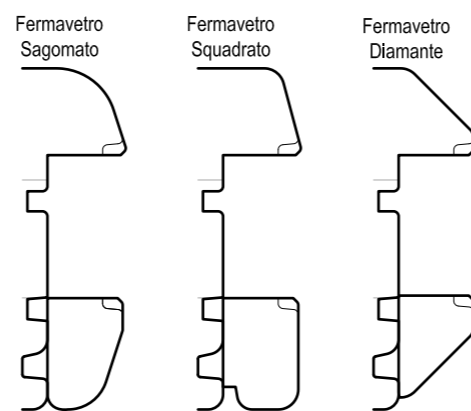


**VISTA INTERNA**

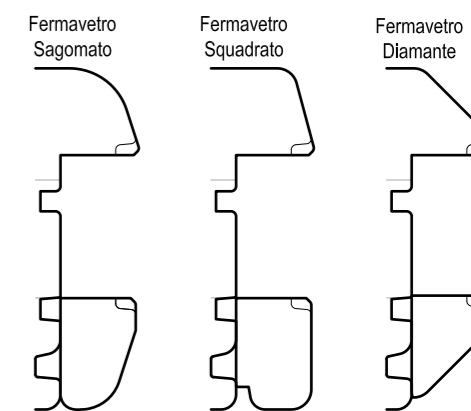




**SCELTA TIPO FERMAVETRO**

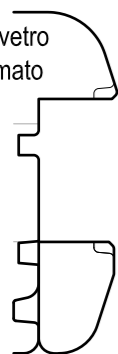


**SCELTA TIPO FERMAVETRO**

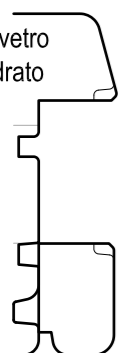


SCELTA  
TIPO FERMAVETRO

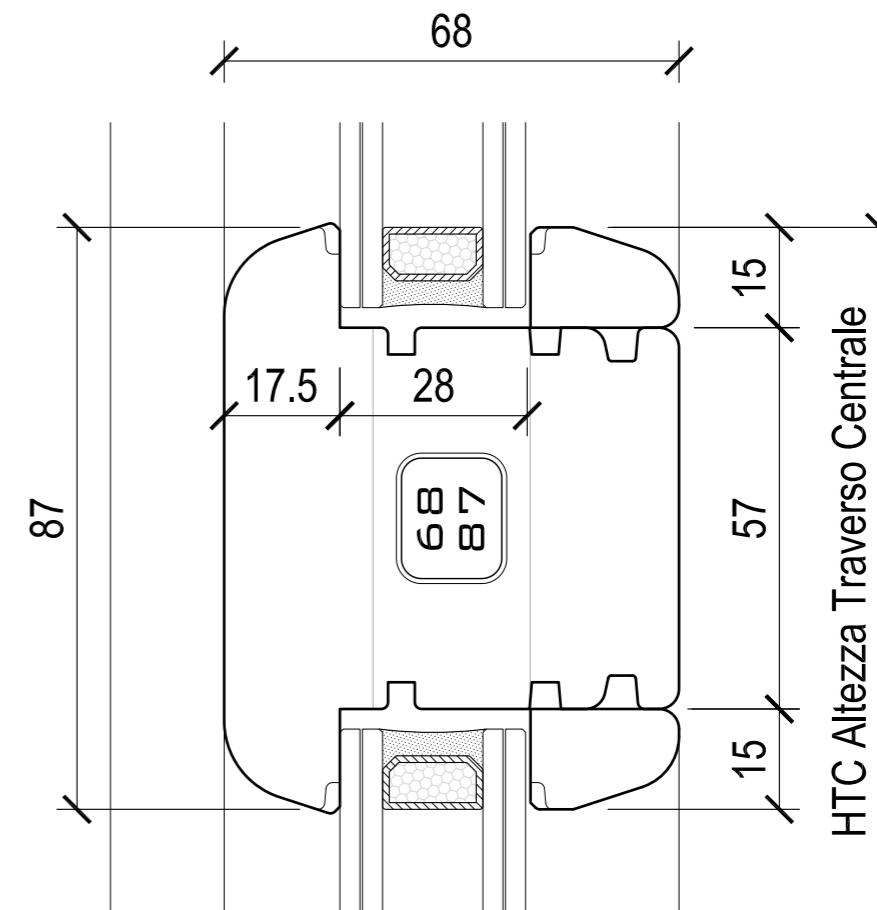
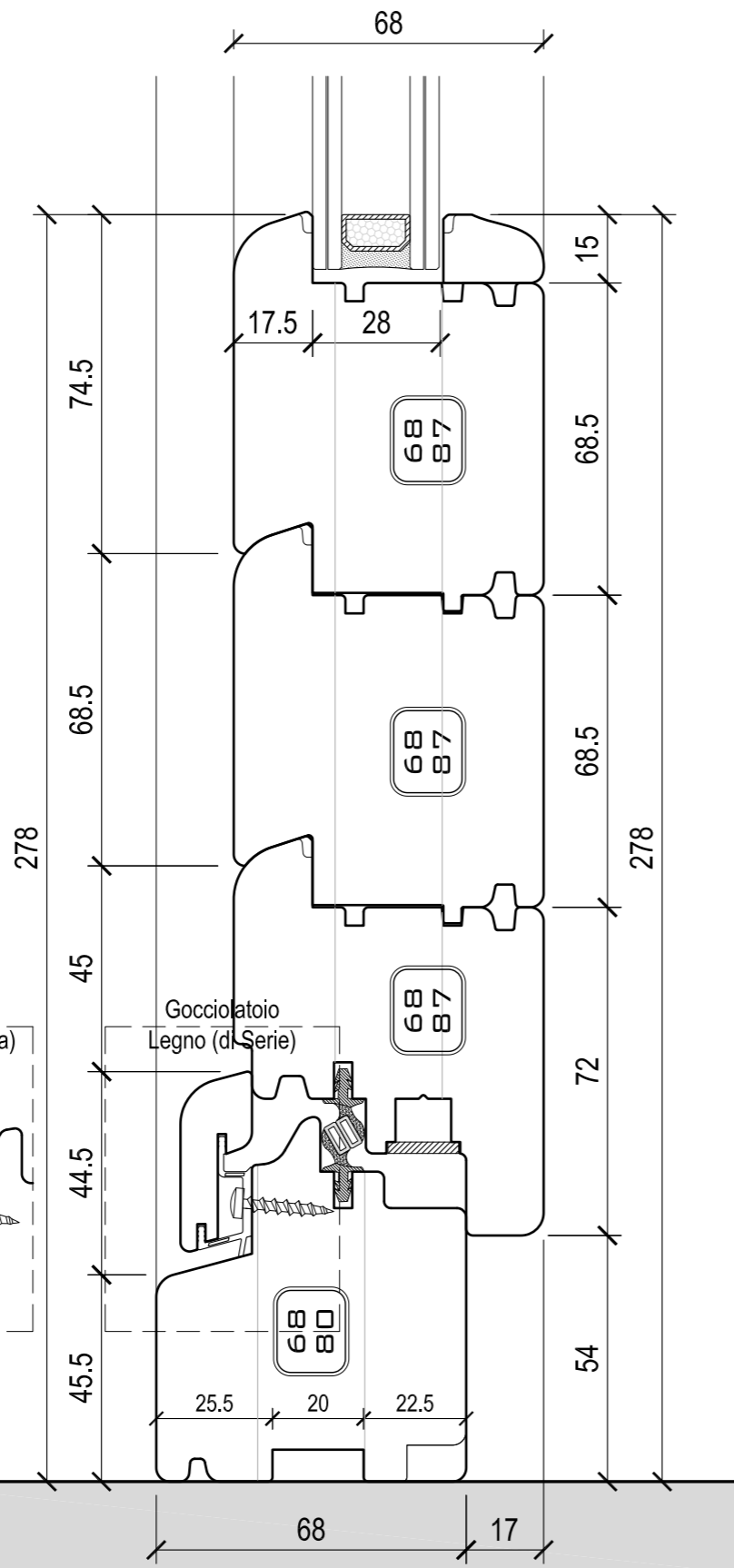
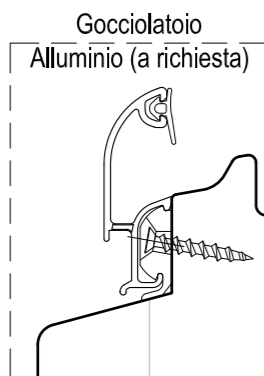
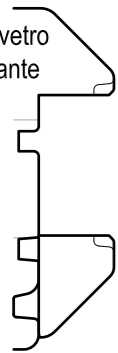
Fermavetro  
Sagomato



Fermavetro  
Squadrato

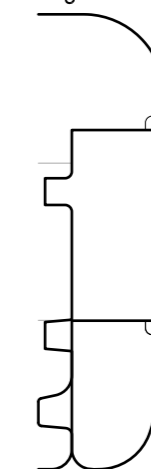


Fermavetro  
Diamante

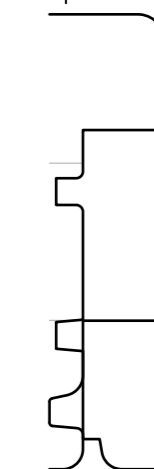


SCELTA  
TIPO FERMAVETRO

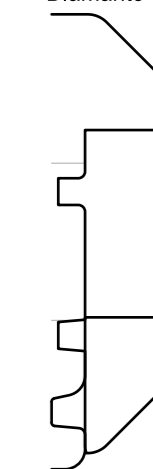
Fermavetro  
Sagomato



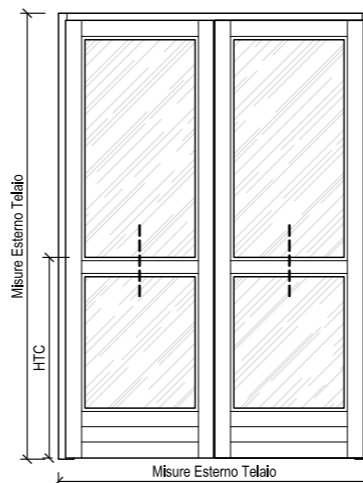
Fermavetro  
Squadrato

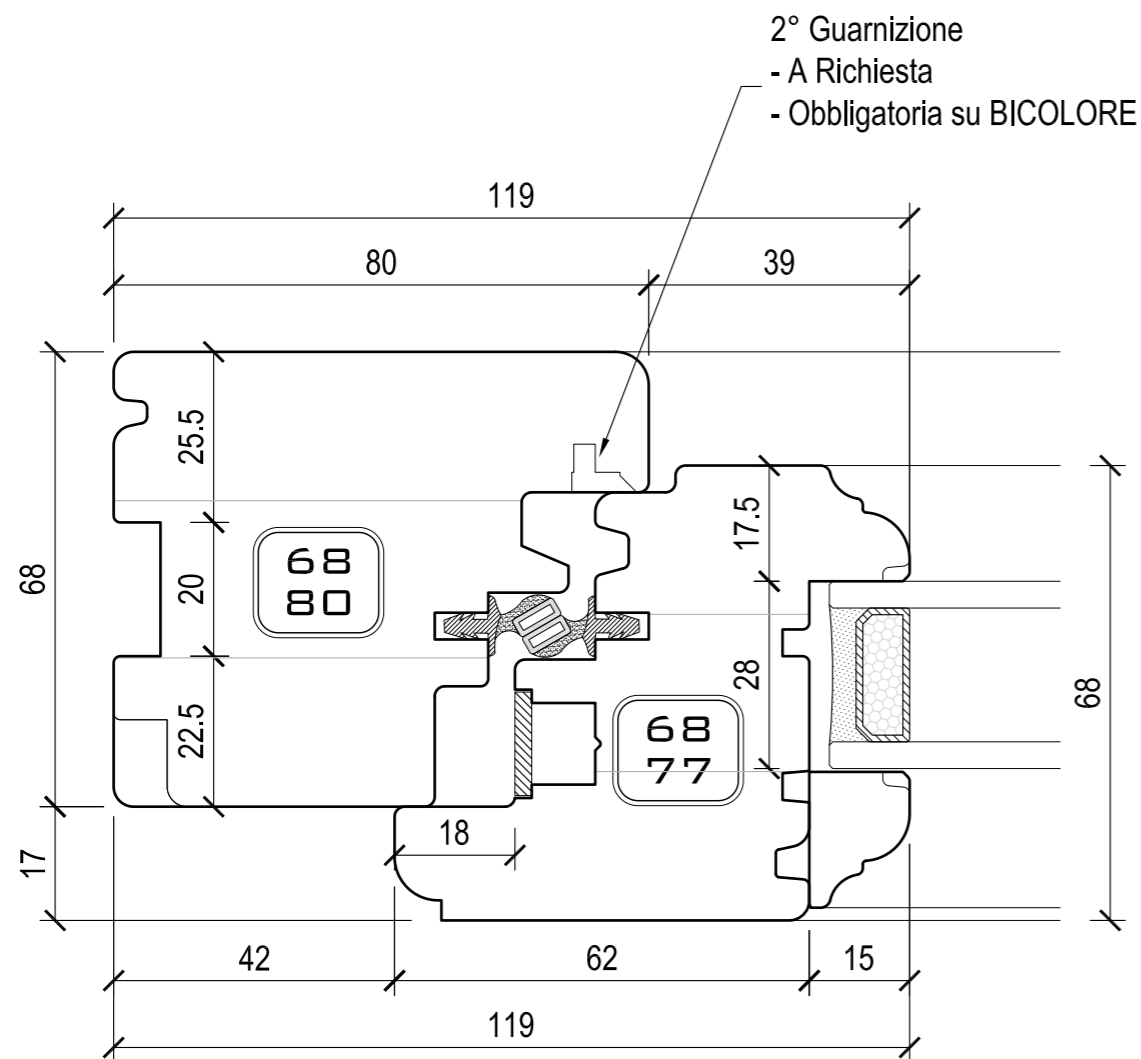


Fermavetro  
Diamante



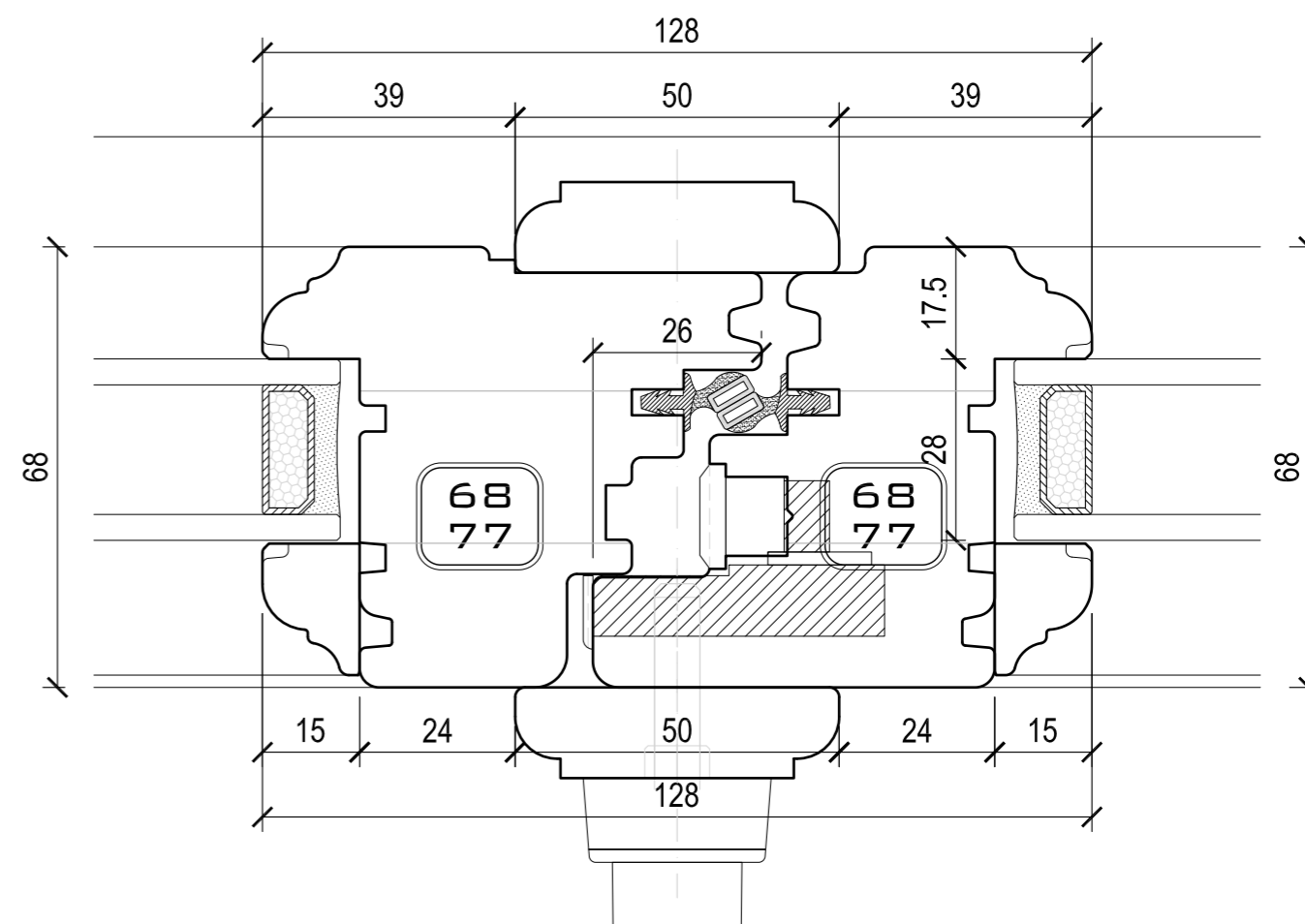
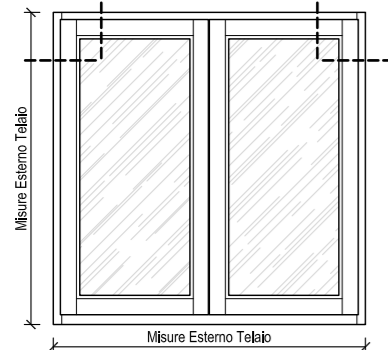
VISTA INTERNA



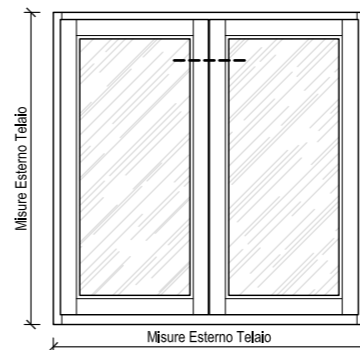


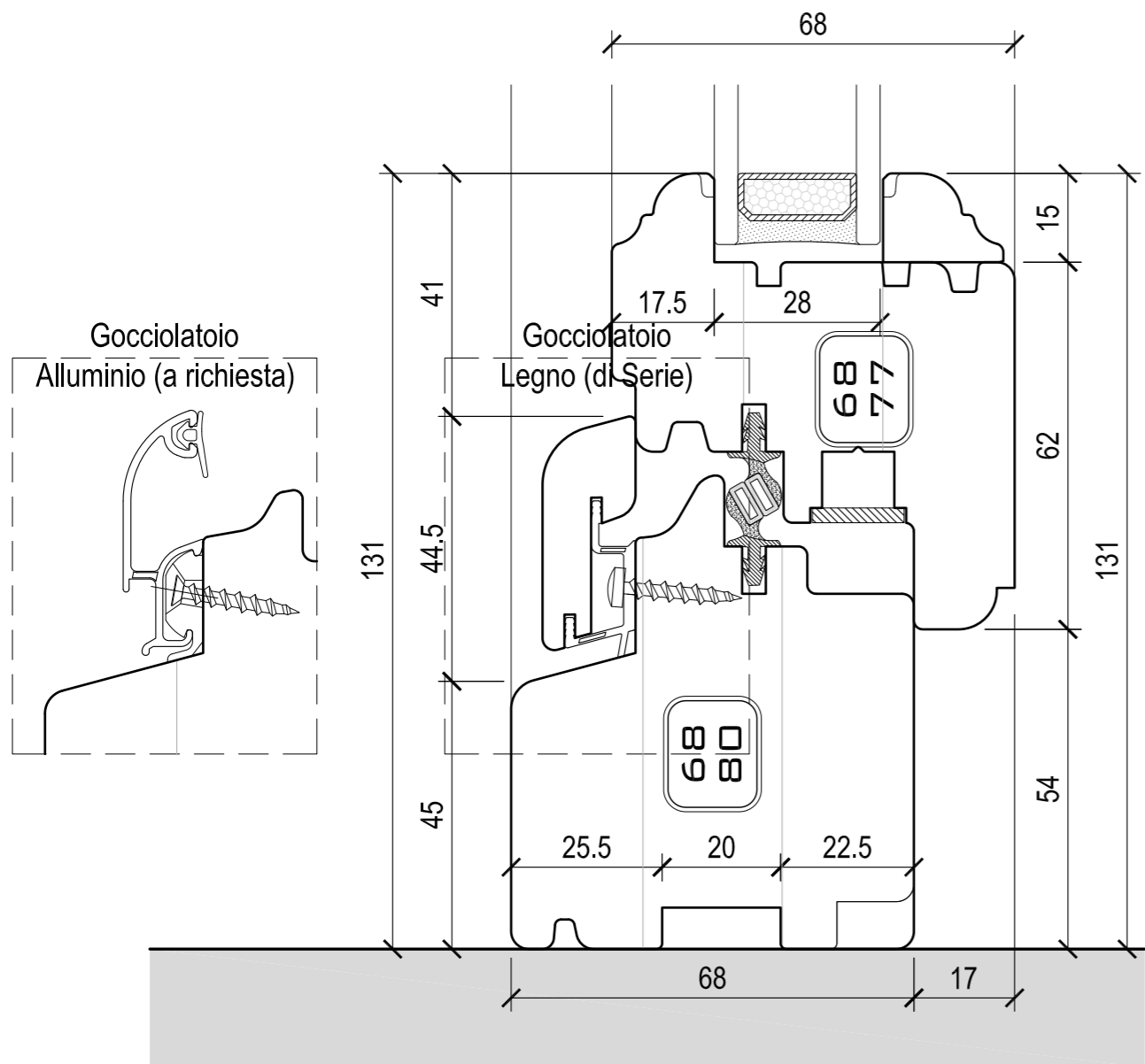
2° Guarnizione  
- A Richiesta  
- Obbligatoria su BICOLORE

VISTA INTERNA

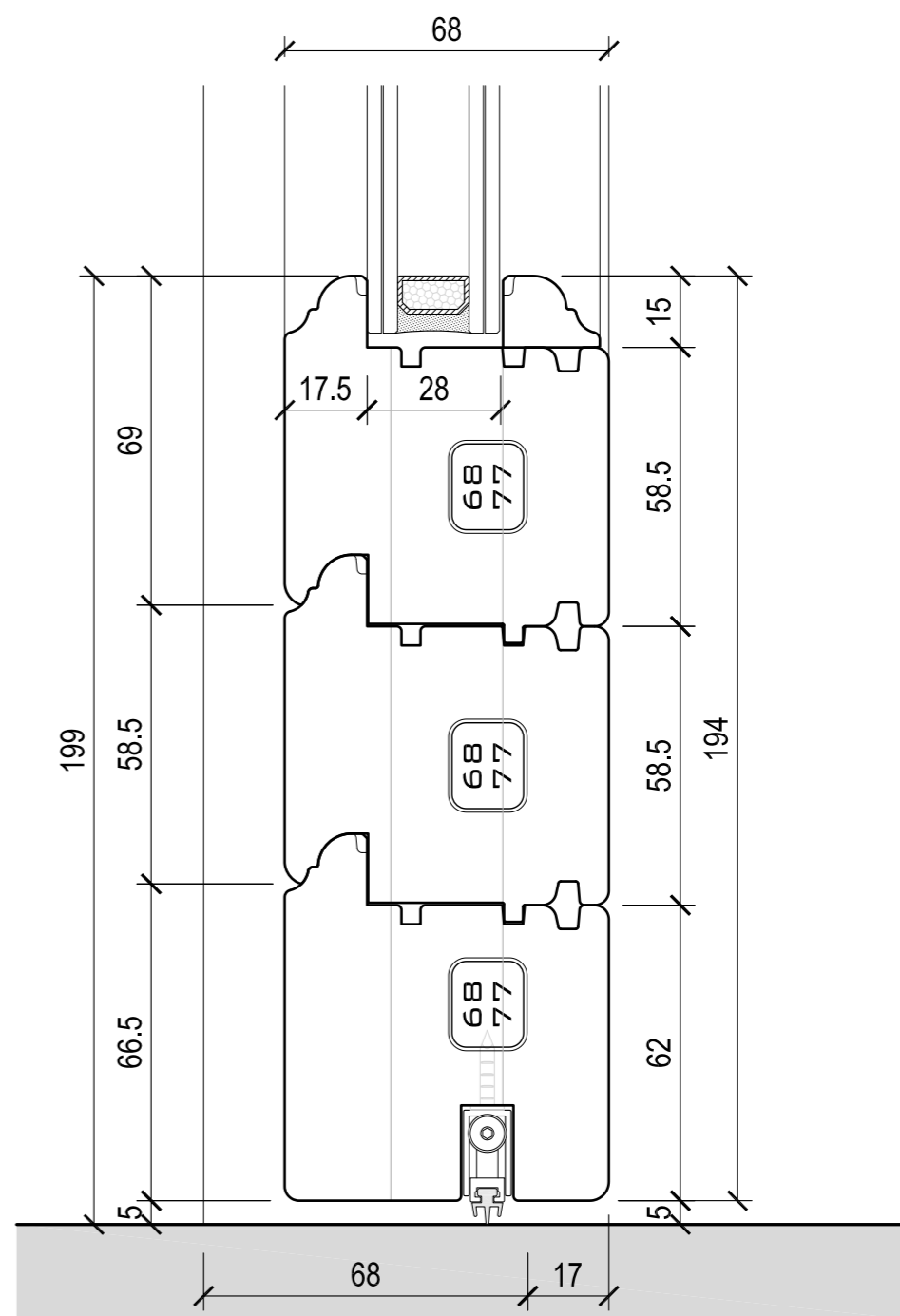
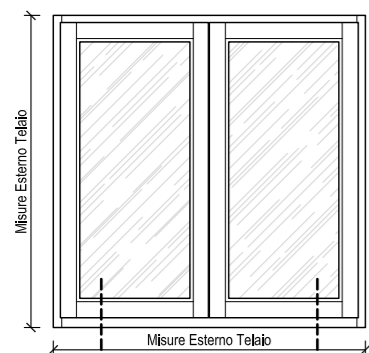


VISTA INTERNA

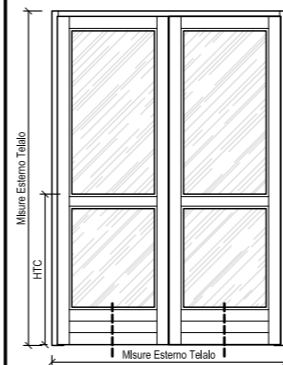


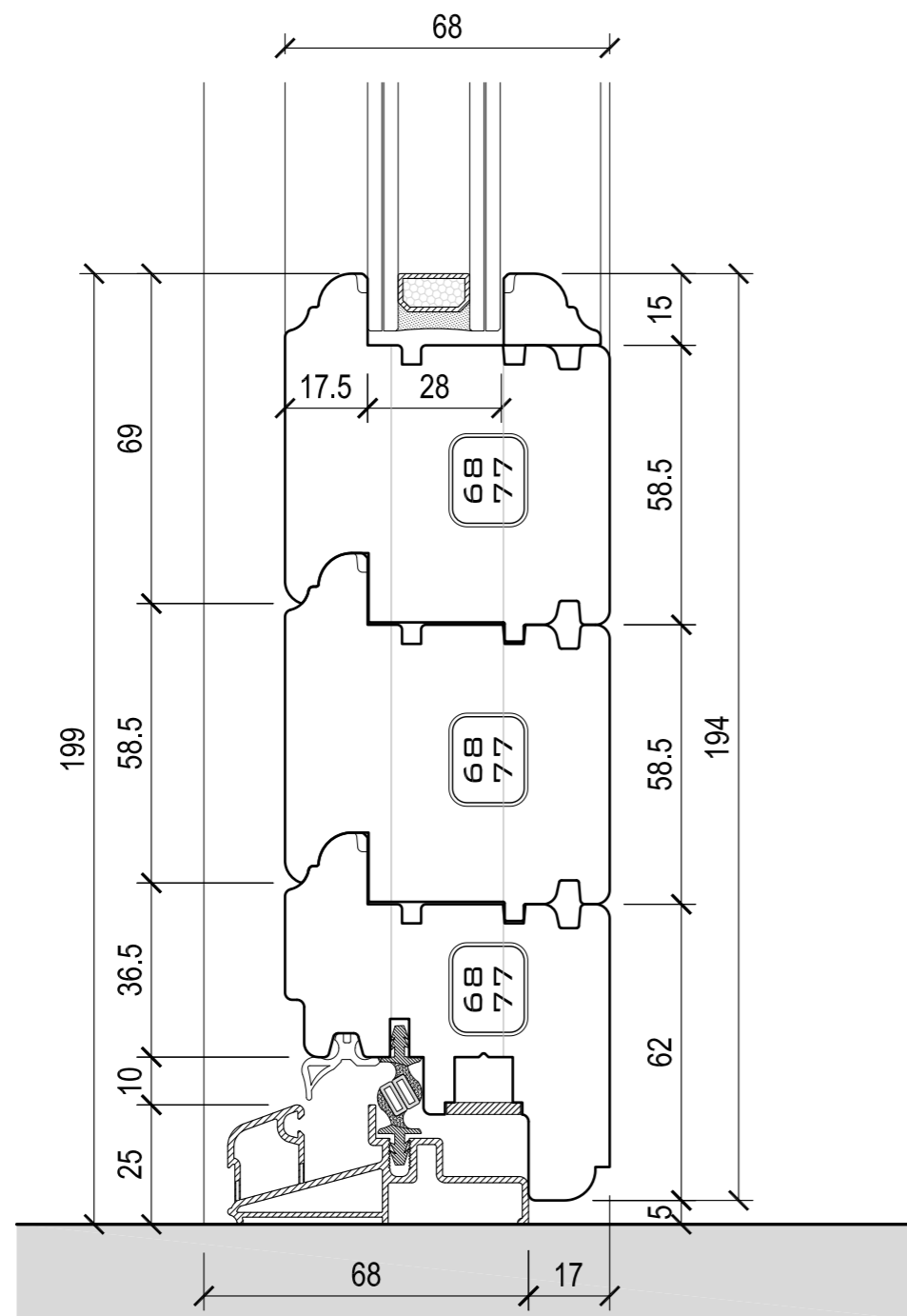


VISTA INTERNA

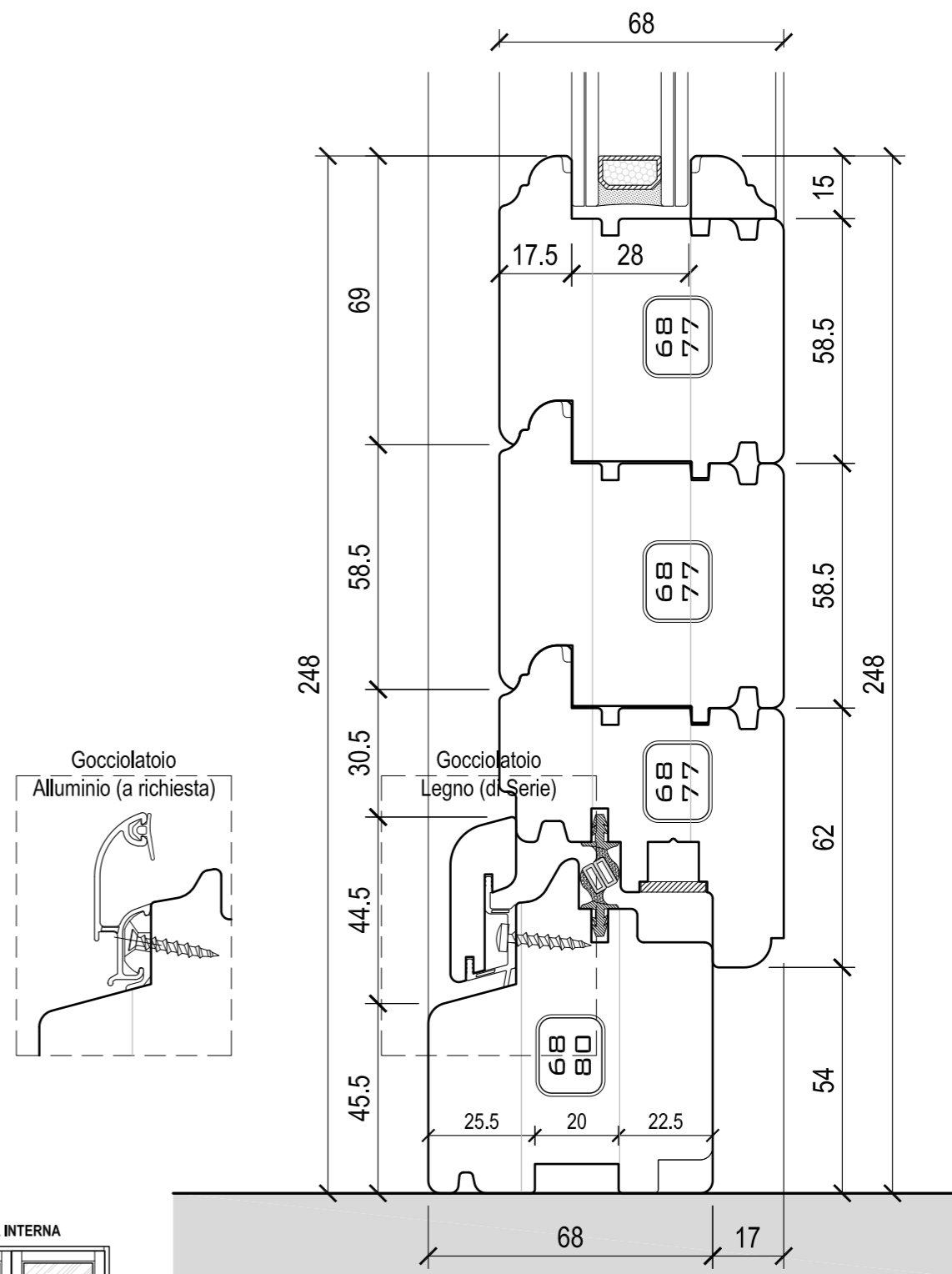
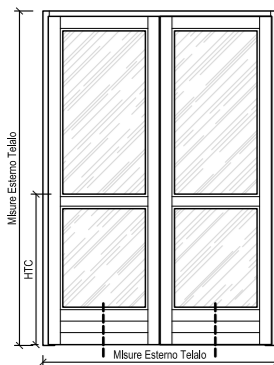


VISTA INTERNA

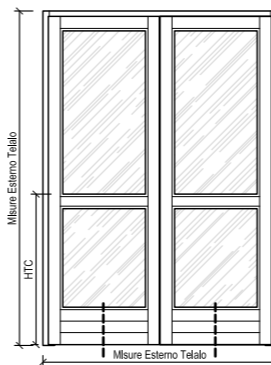


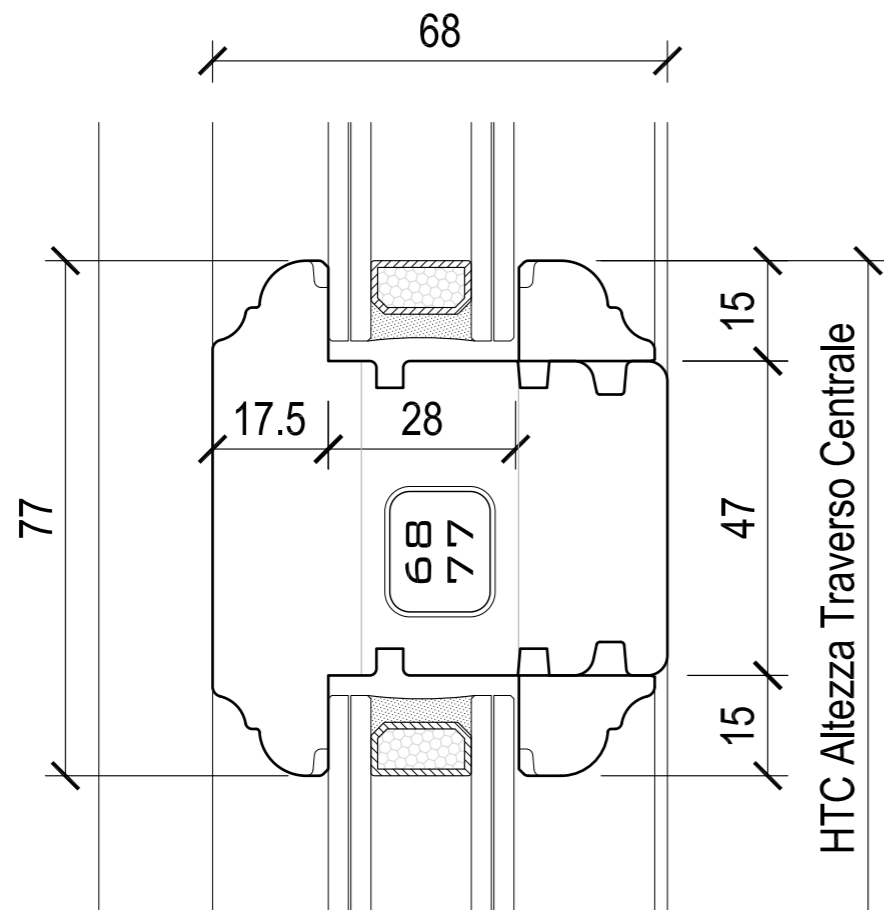


VISTA INTERNA



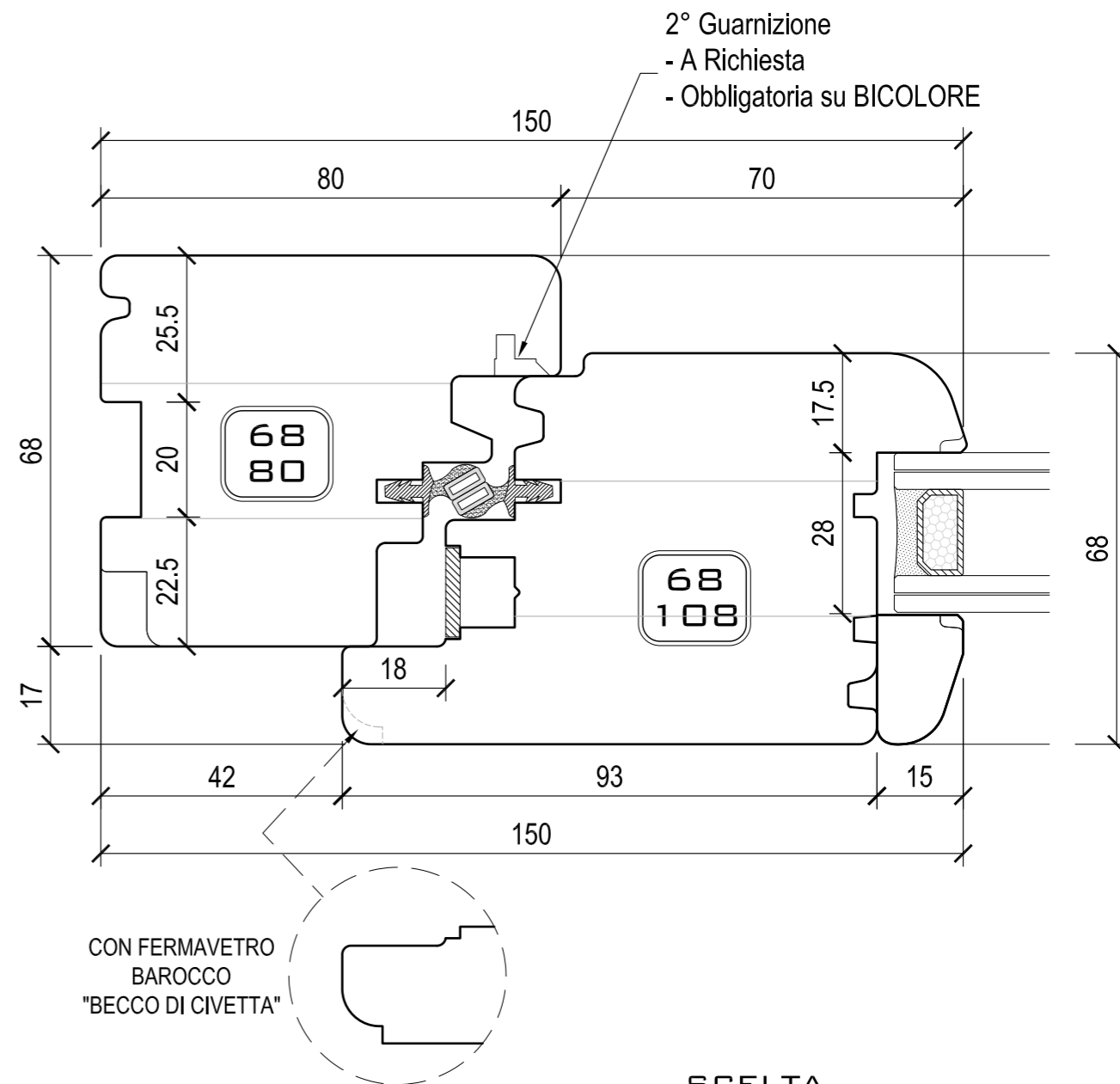
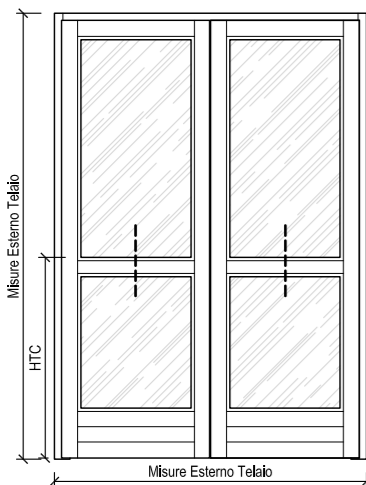
VISTA INTERNA





HTC Altezza Traverso Centrale

VISTA INTERNA



CON FERMAVETRO  
BAROCCO  
"BECCO DI CIVETTA"

SCELTA  
TIPO FERMAVETRO

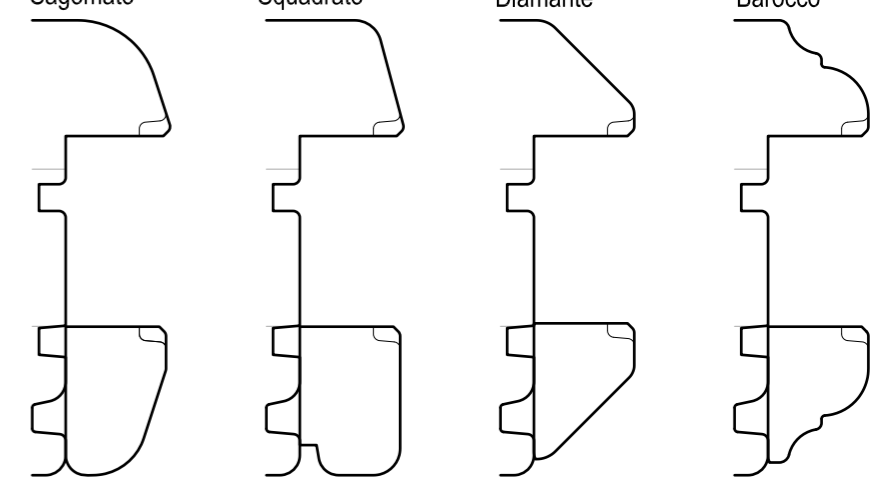
Fermavetro  
Sagomato

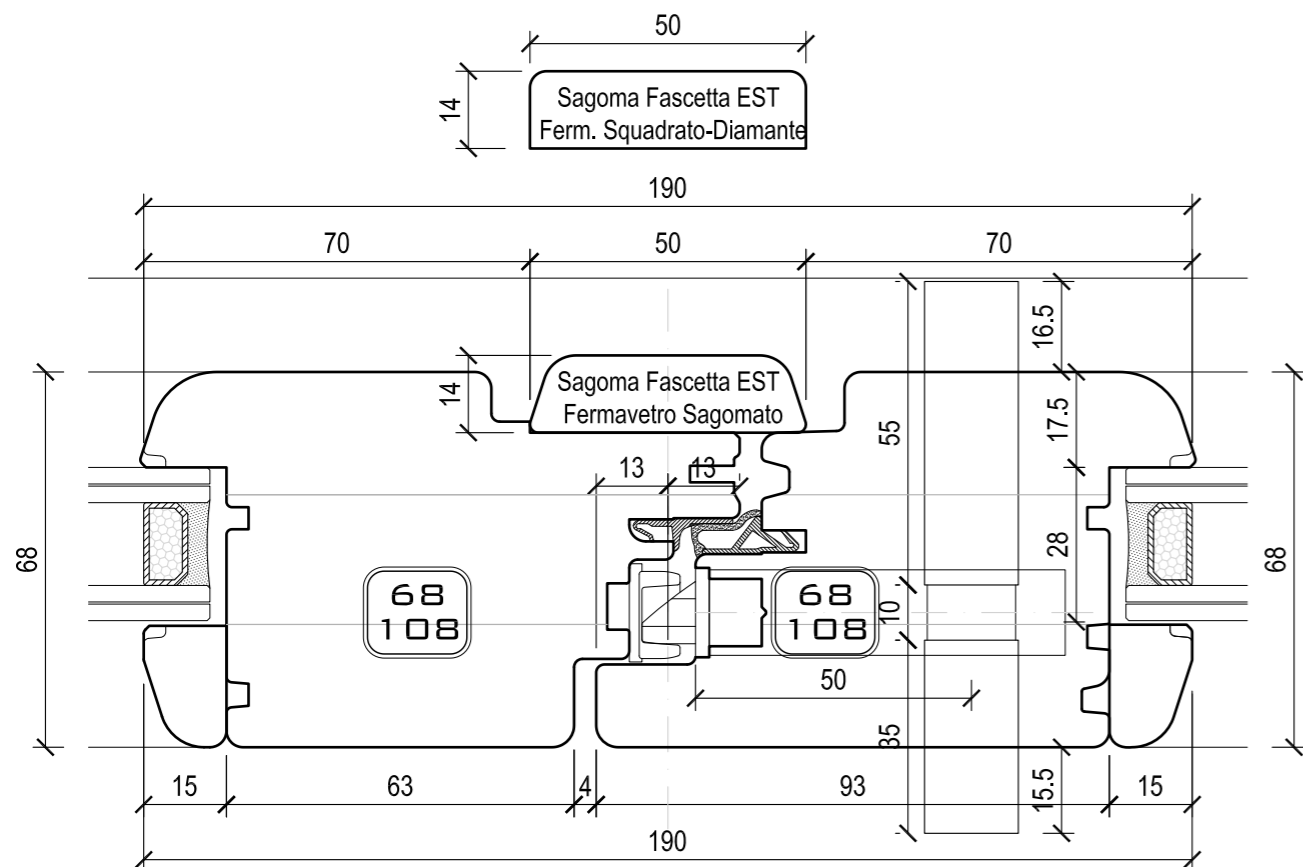
Fermavetro  
Squadrato

Fermavetro  
Diamante

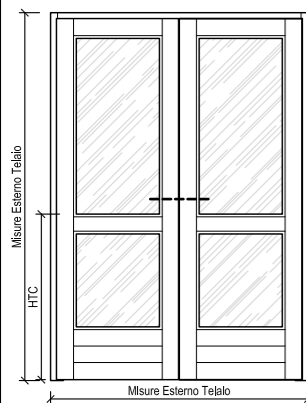
Fermavetro  
Barocco

VISTA INTERNA

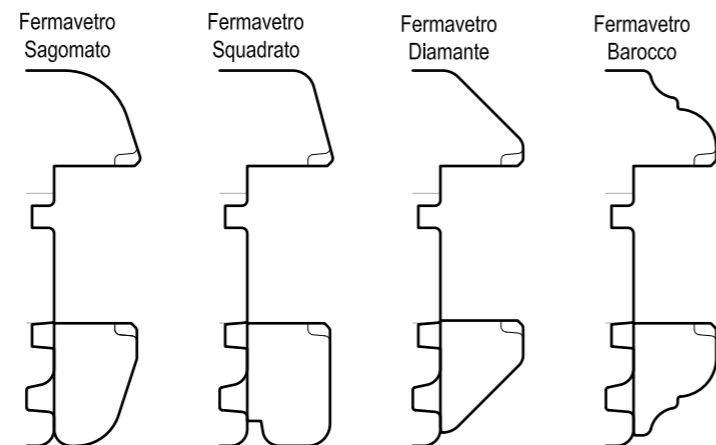




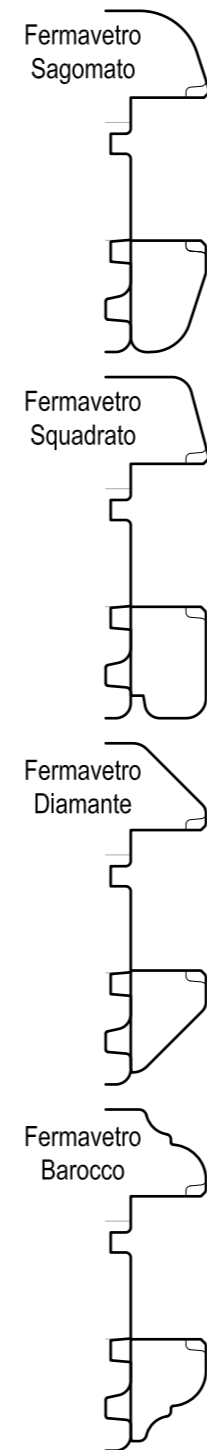
VISTA INTERNA



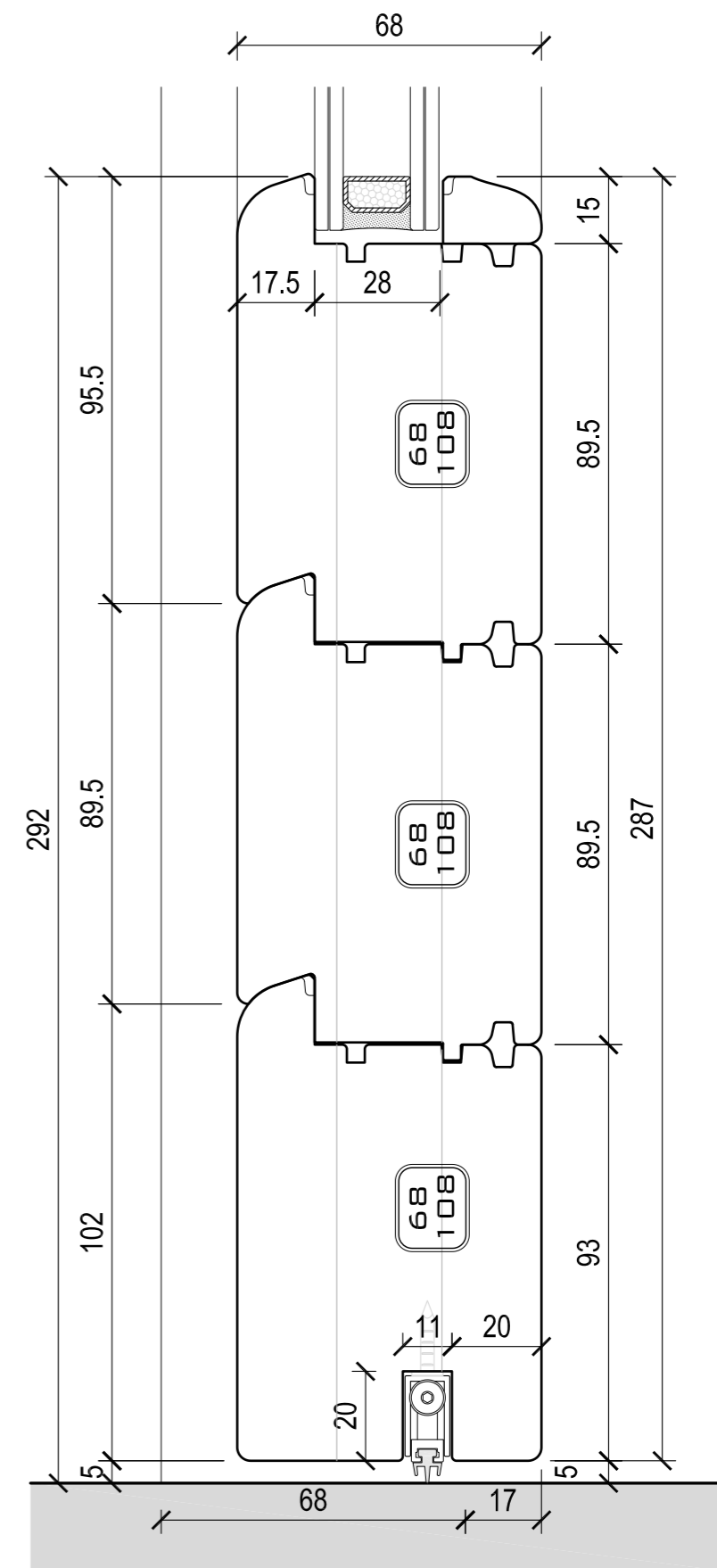
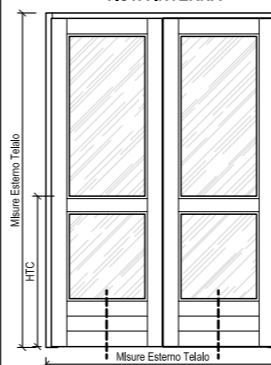
SCELTA TIPO FERMAVETRO



SCELTA TIPO FERMAVETRO



VISTA INTERNA



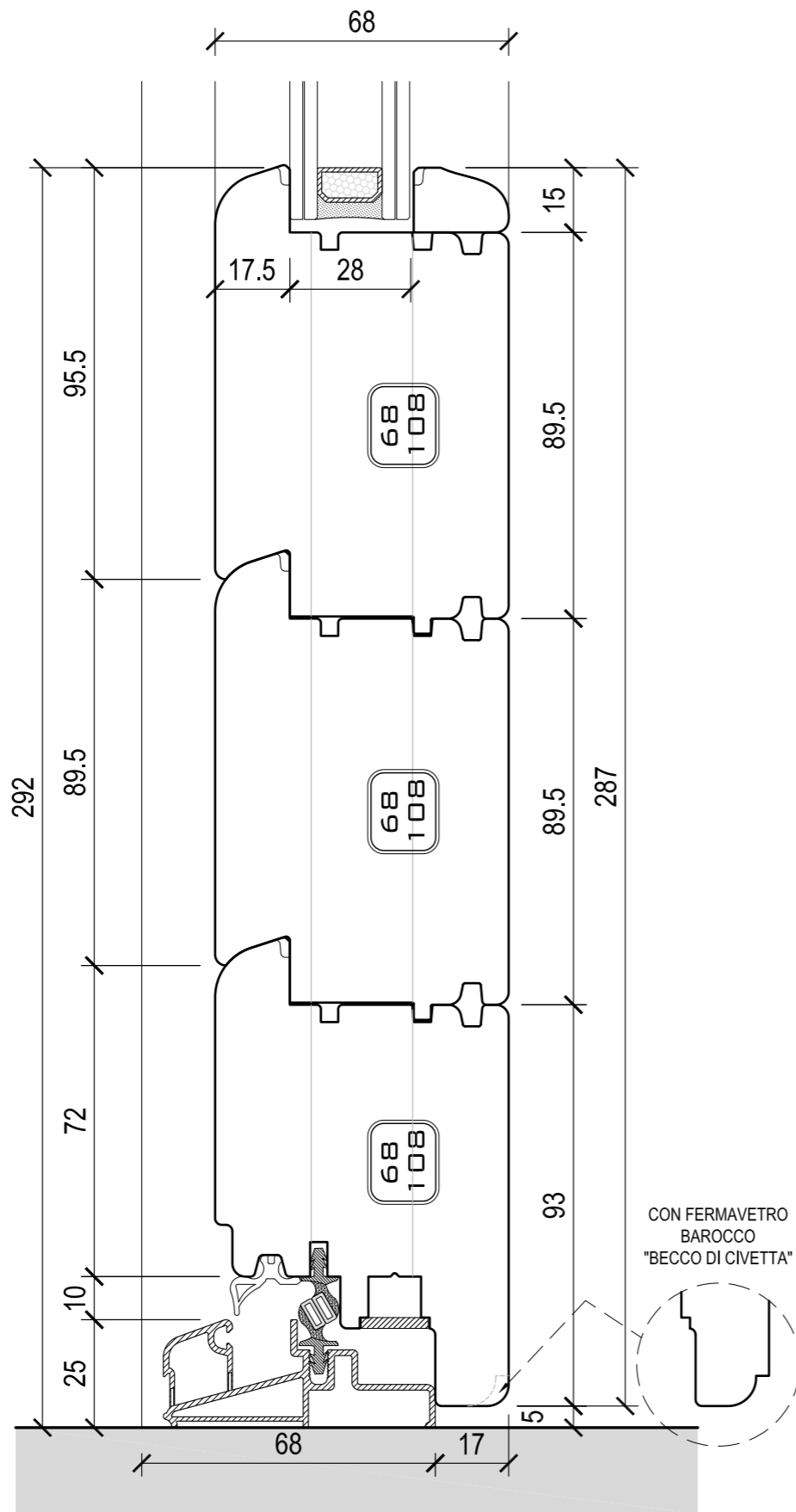
SCELTA  
TIPO FERMAVETRO

Fermavetro  
Sagomato

Fermavetro  
Squadrato

Fermavetro  
Diamante

Fermavetro  
Barocco



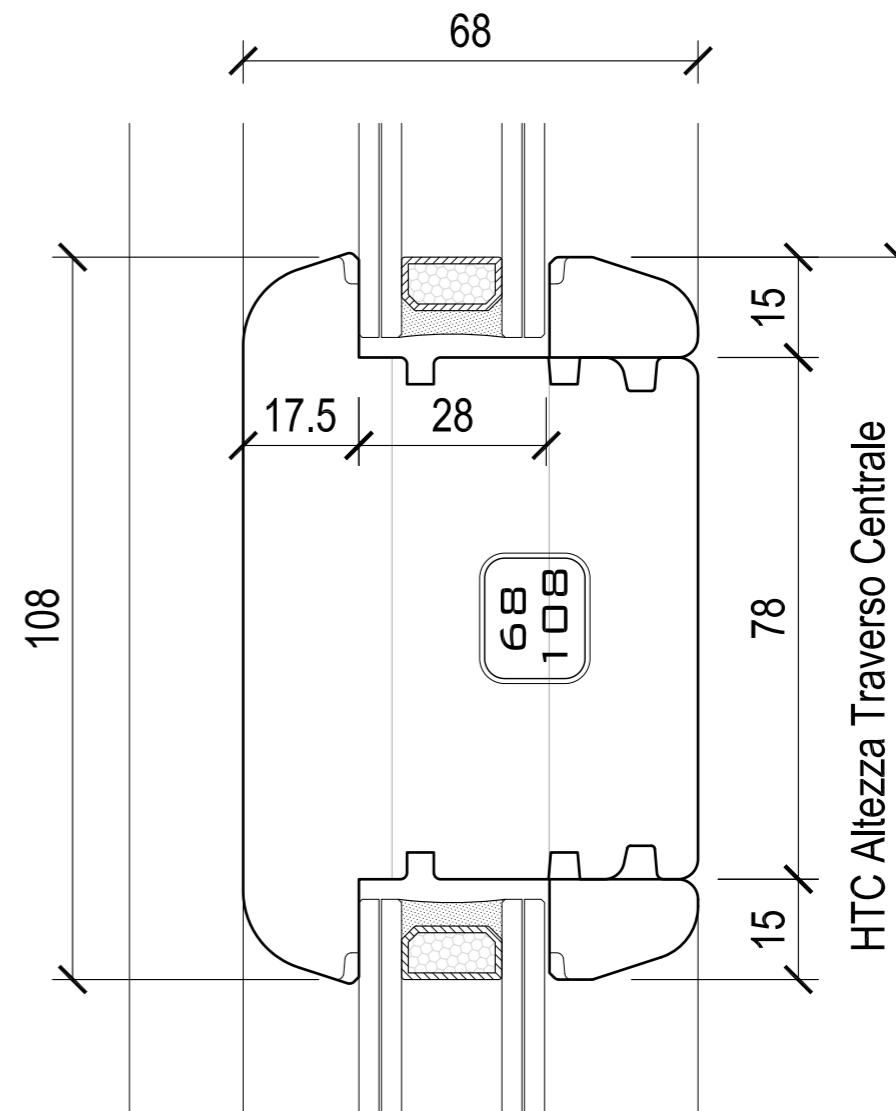
SCELTA  
TIPO FERMAVETRO

Fermavetro  
Sagomato

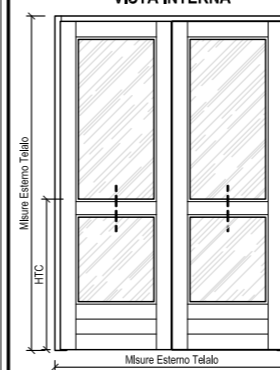
Fermavetro  
Squadrato

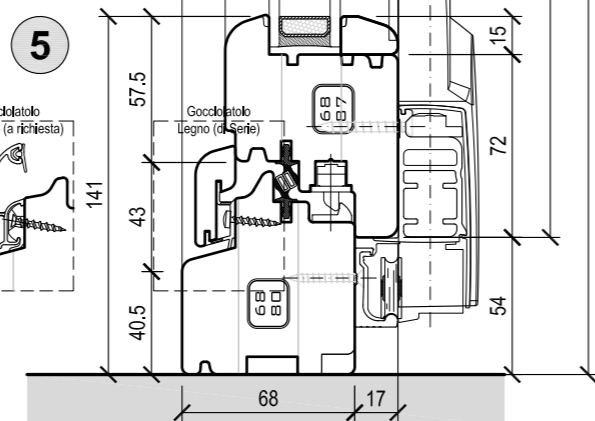
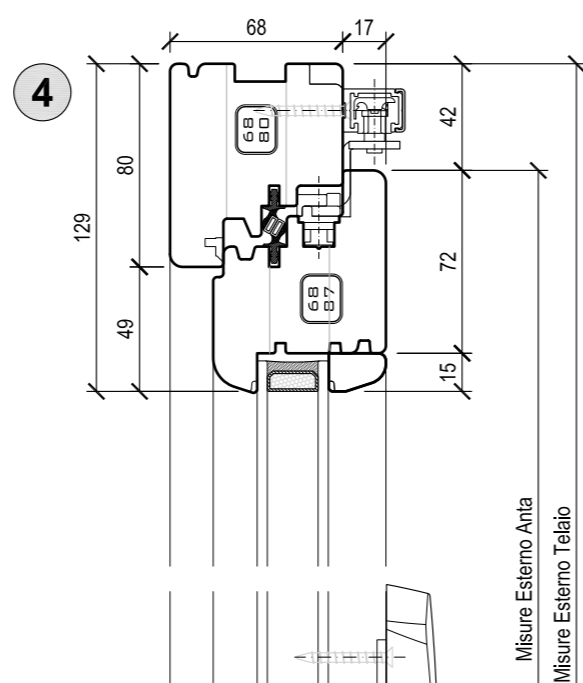
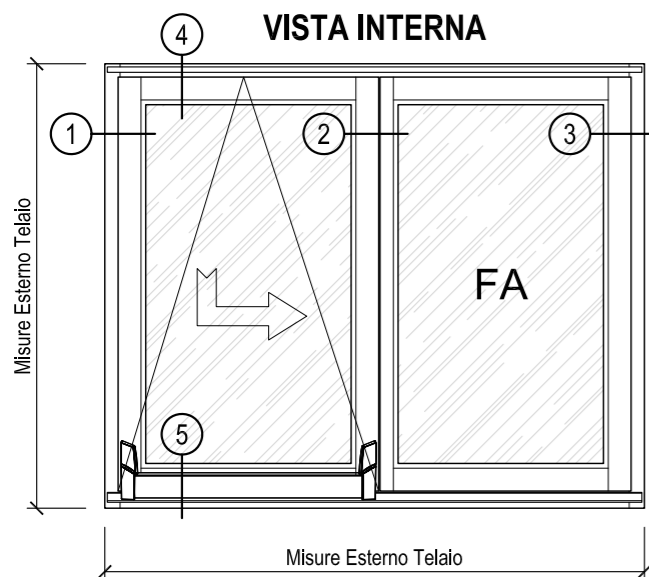
Fermavetro  
Diamante

Fermavetro  
Barocco

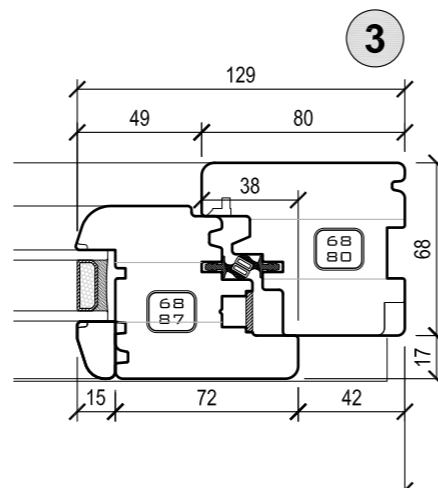
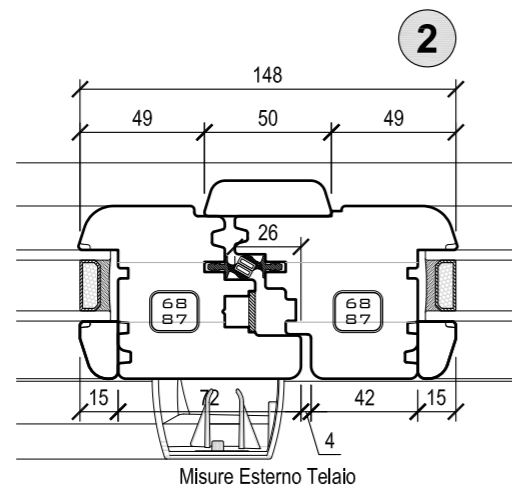
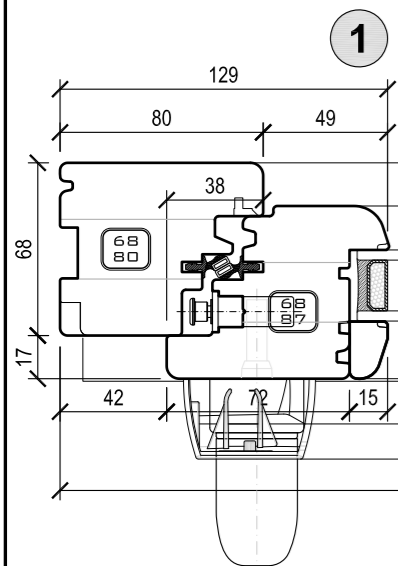
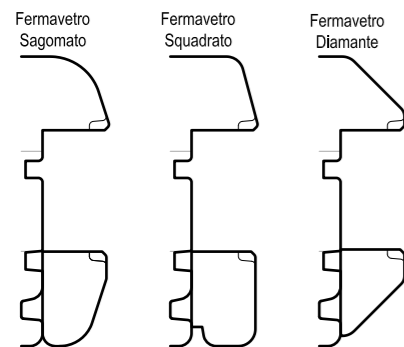


VISTA INTERNA

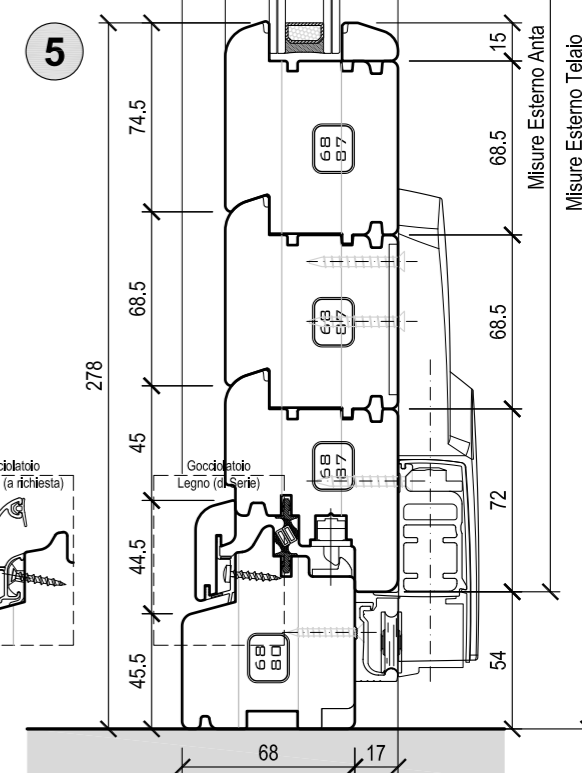
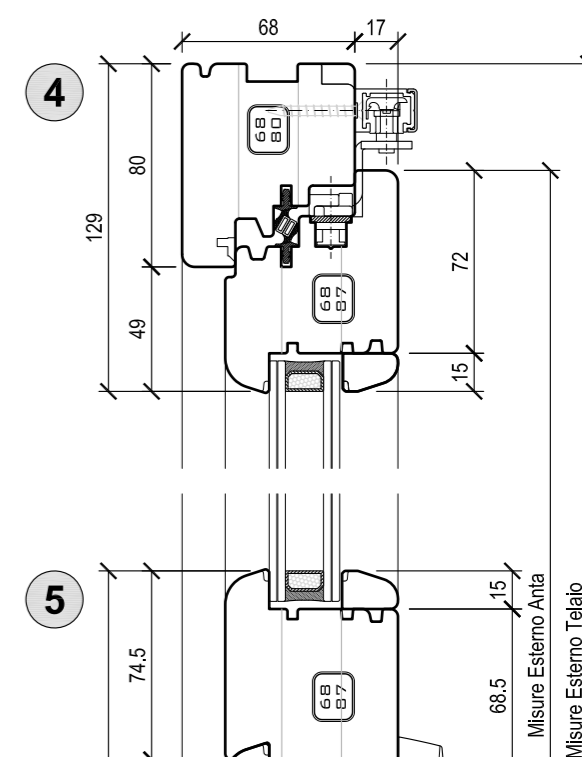
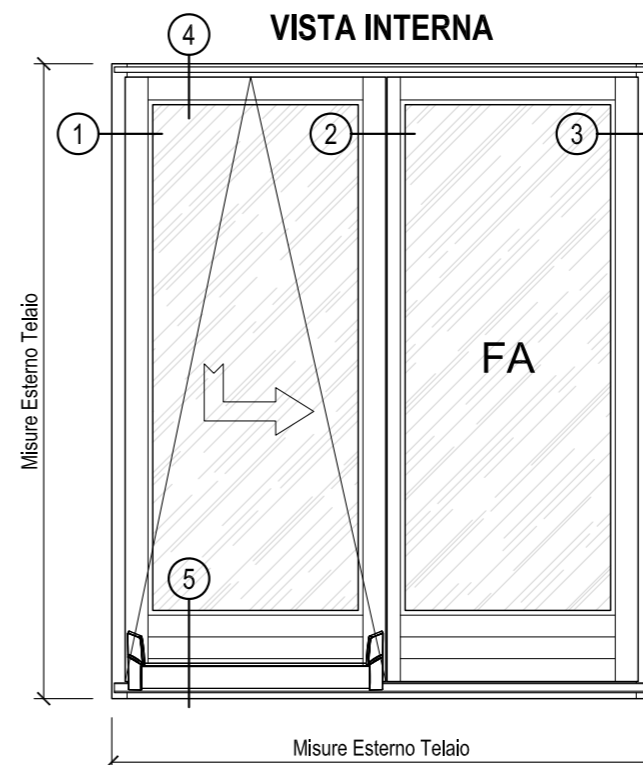




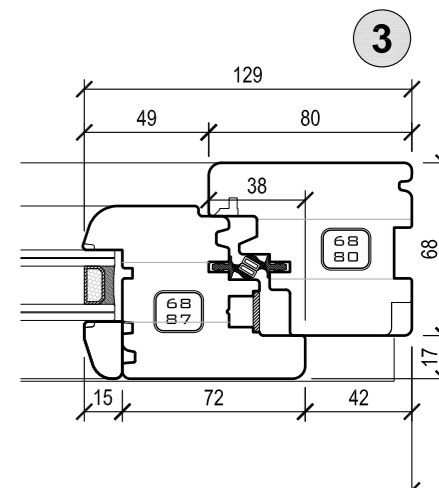
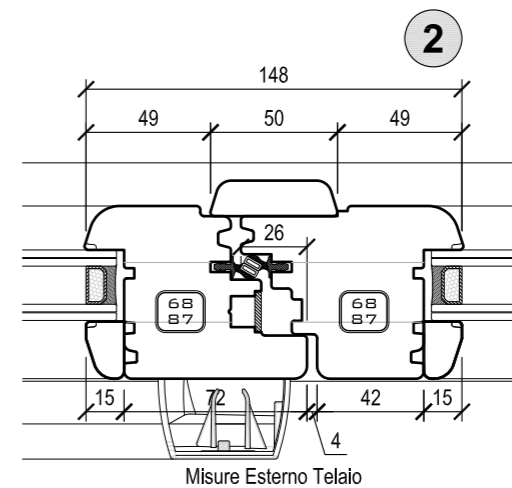
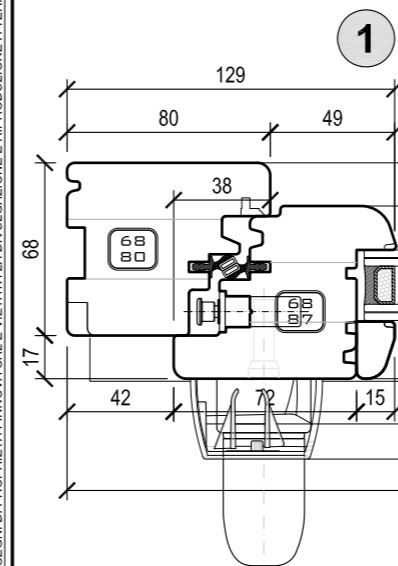
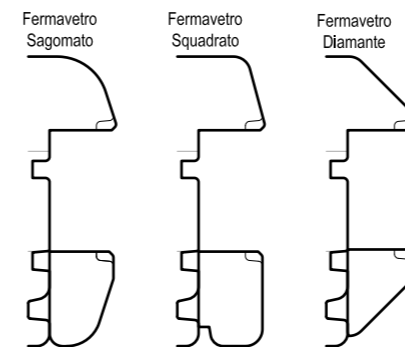
**SCELTA TIPO FERMAVETRO**

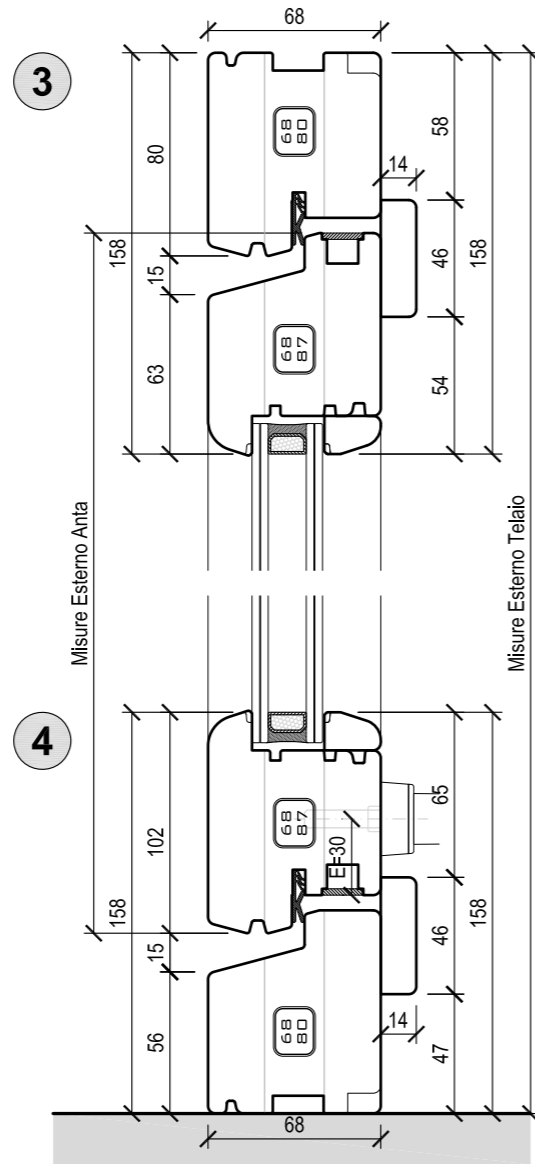
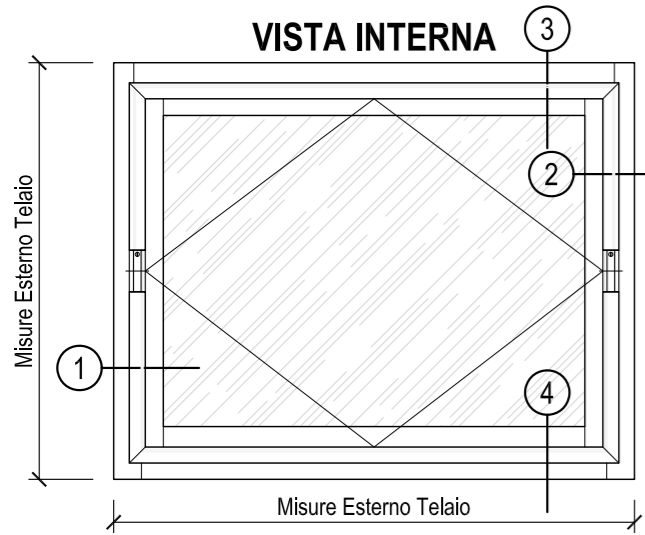


Soglia PF

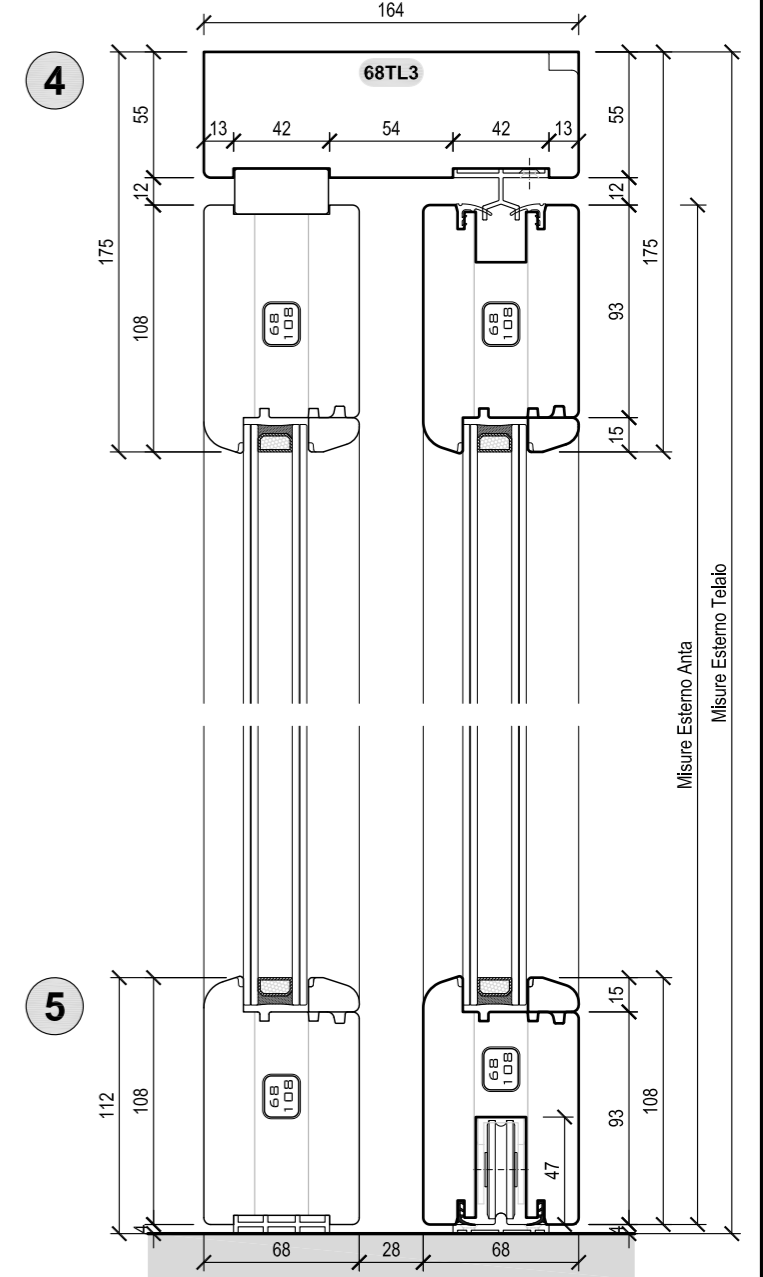
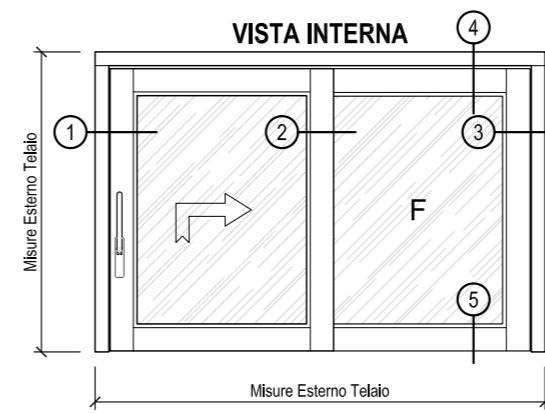
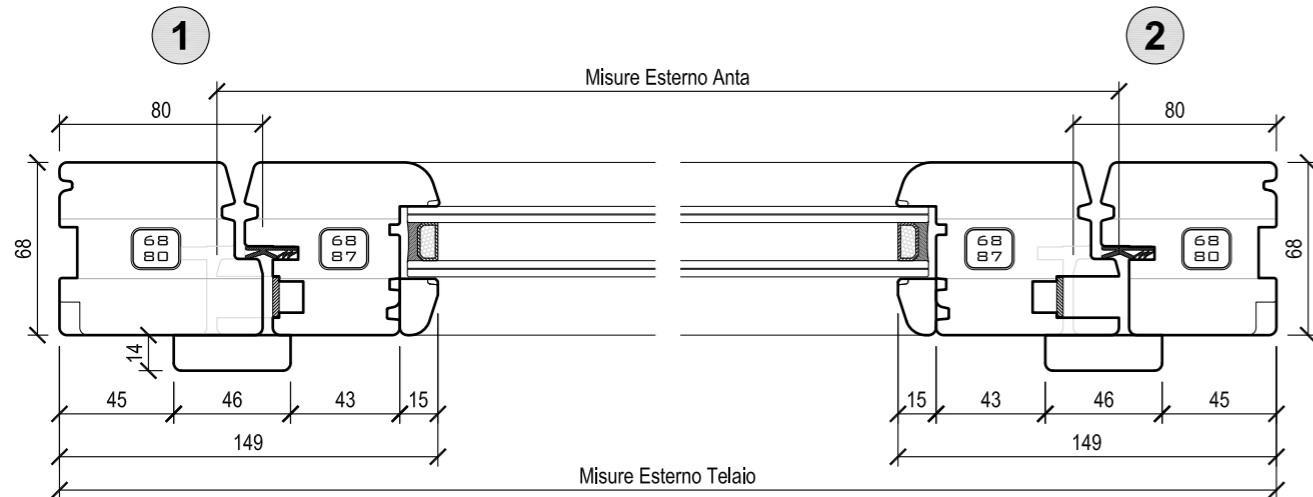
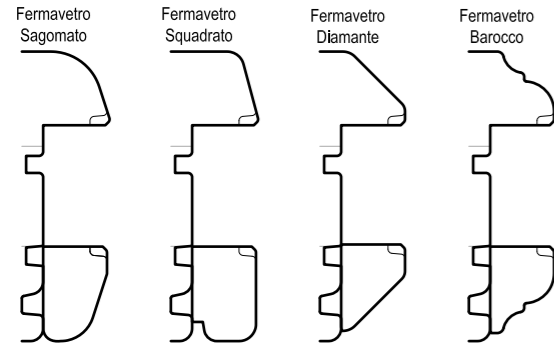


**SCELTA TIPO FERMAVETRO**

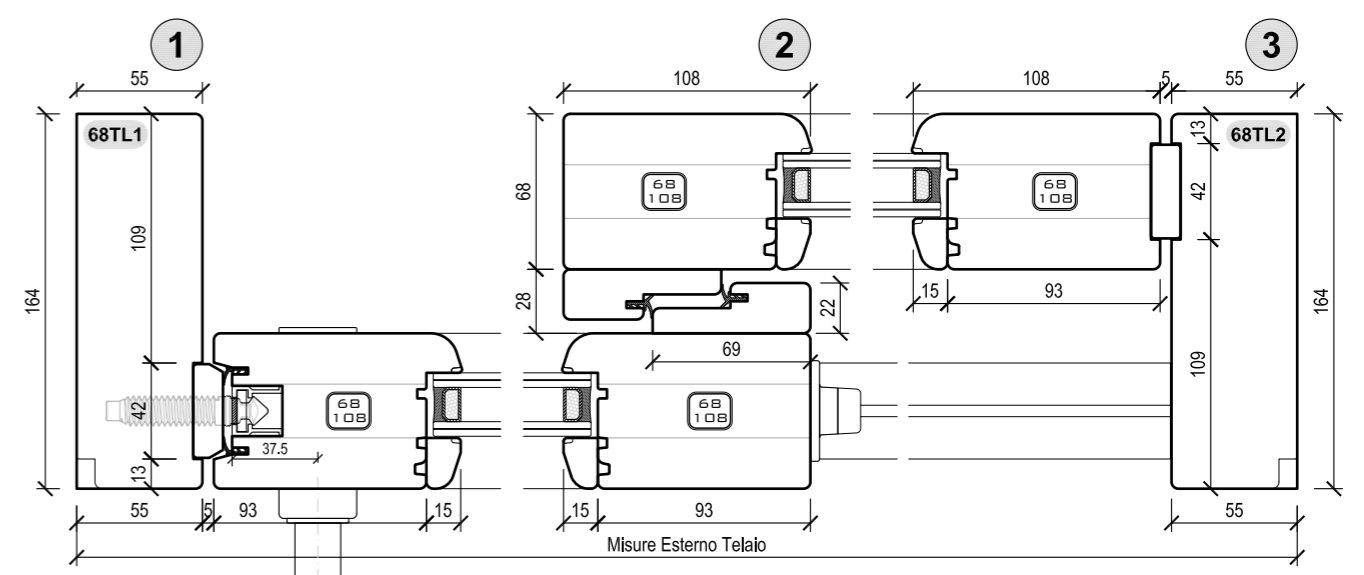
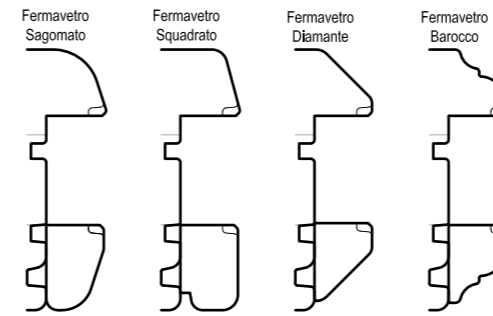


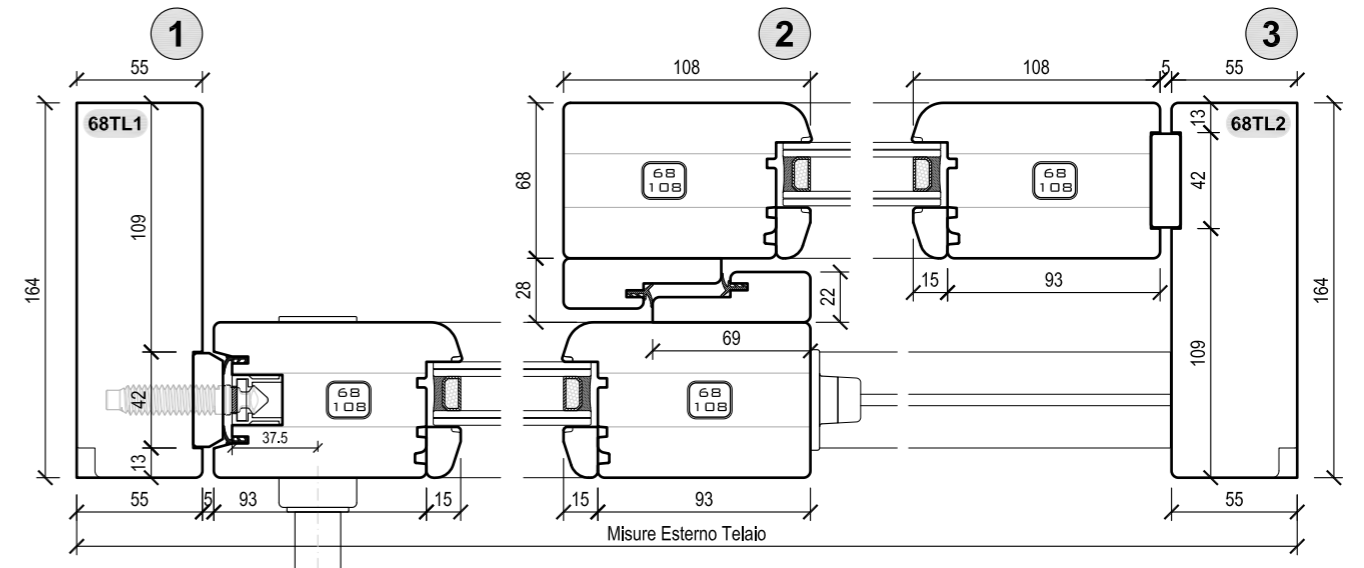
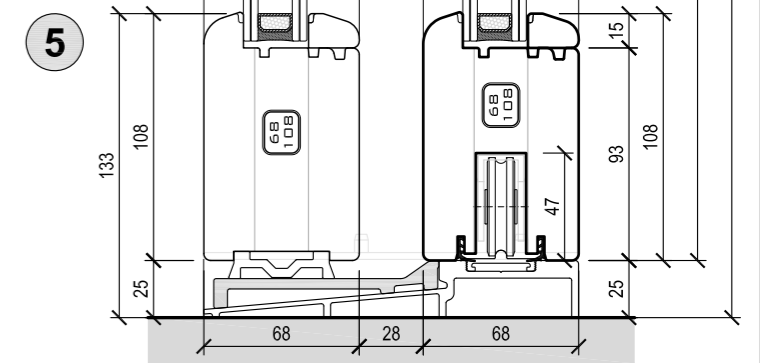
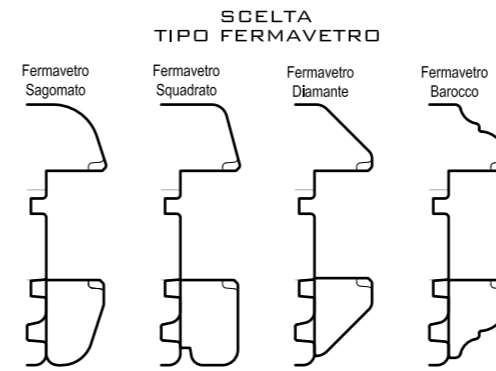
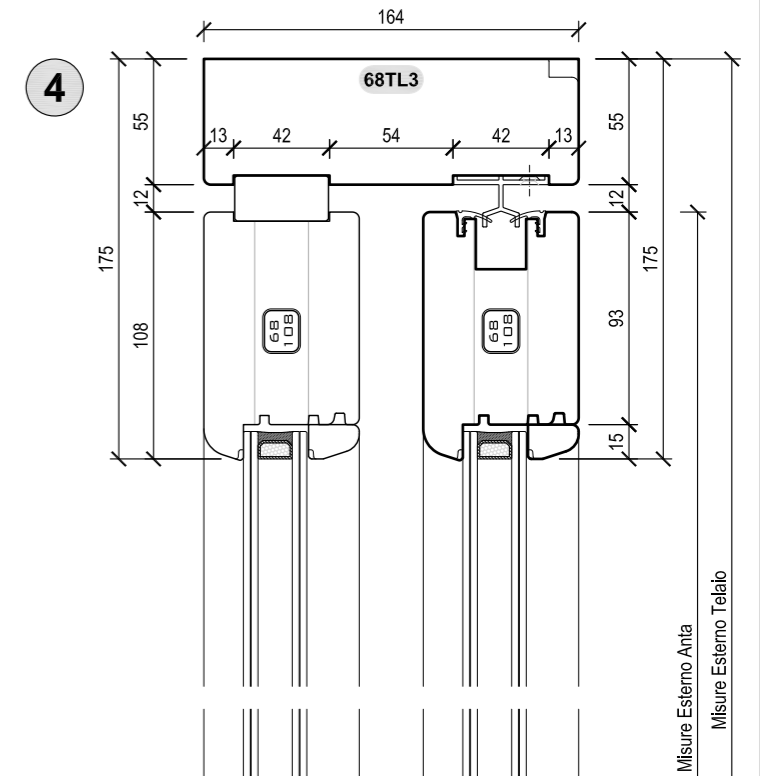
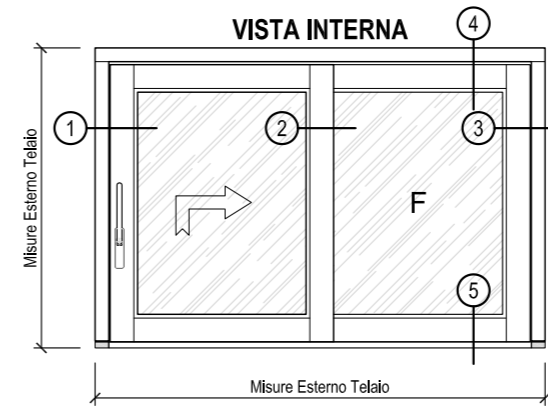
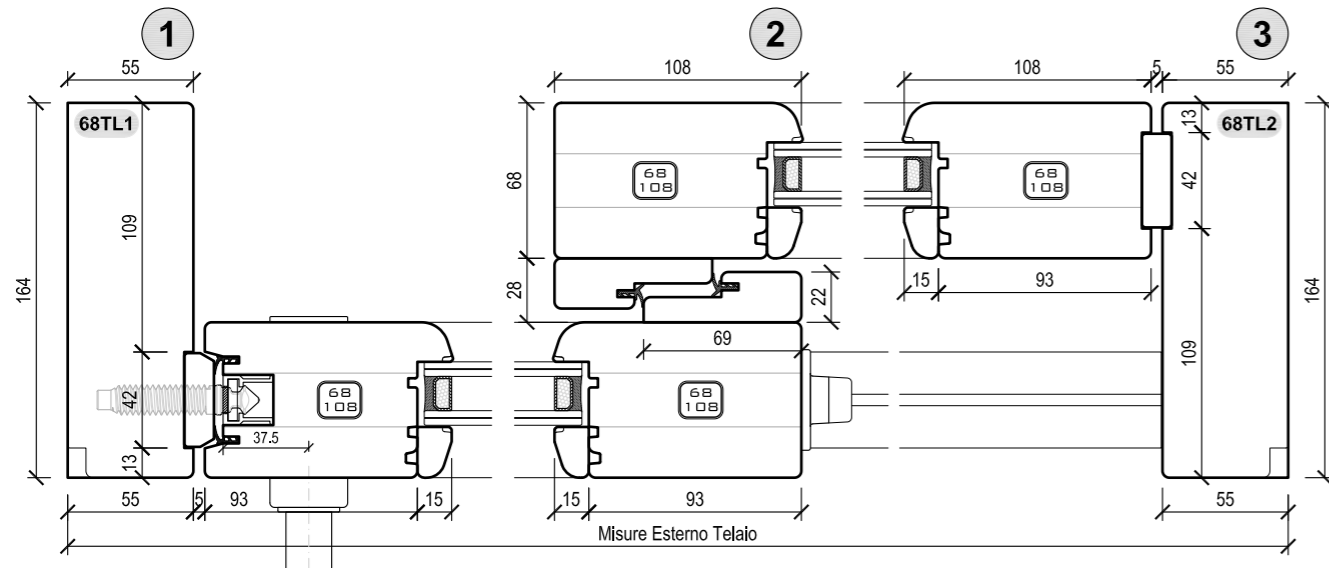
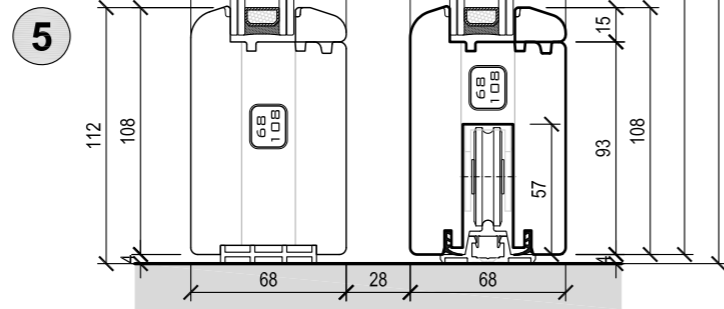
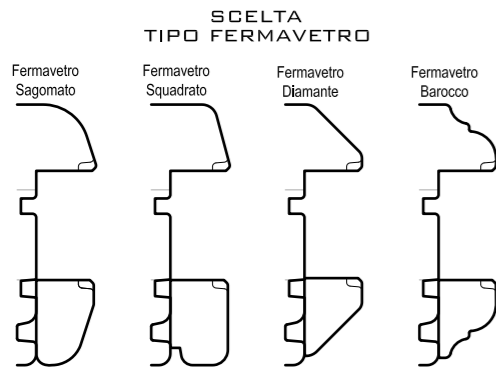
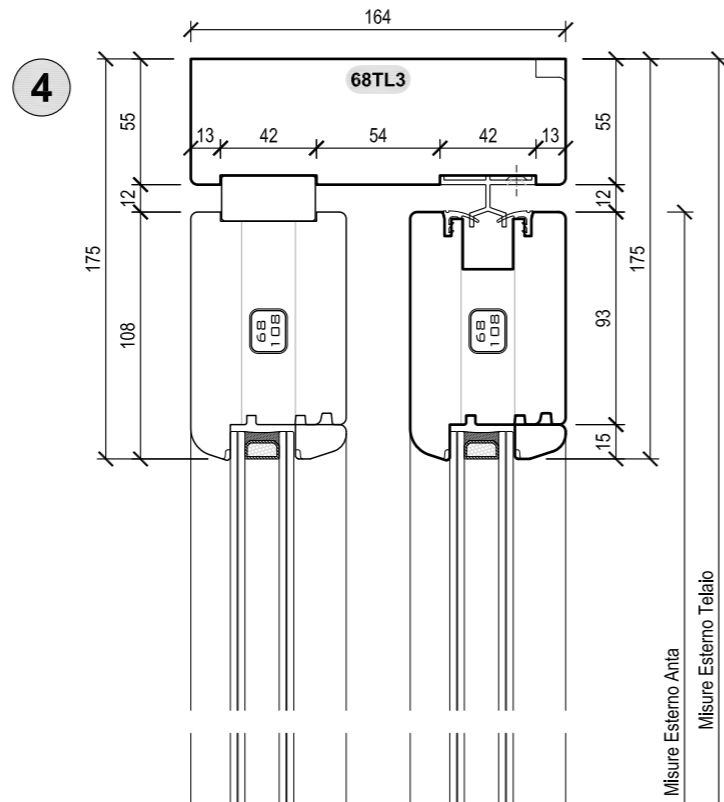
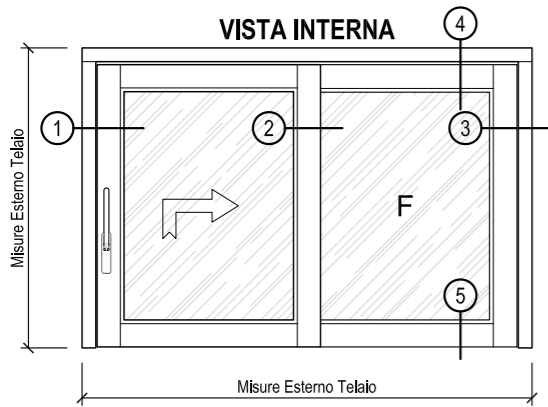


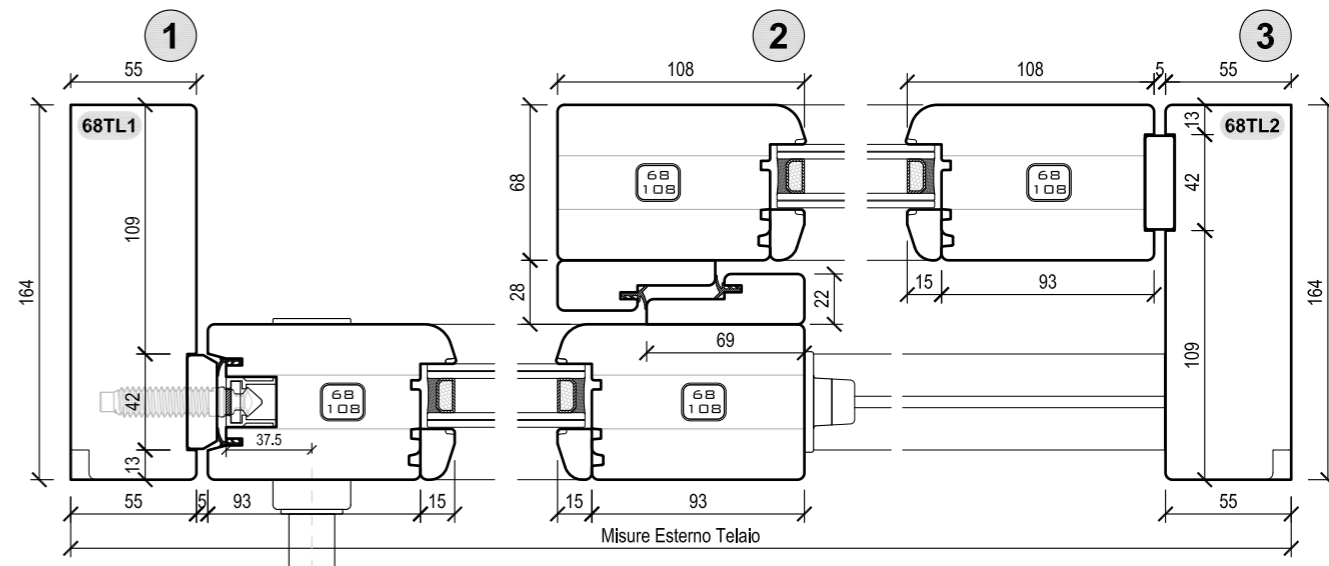
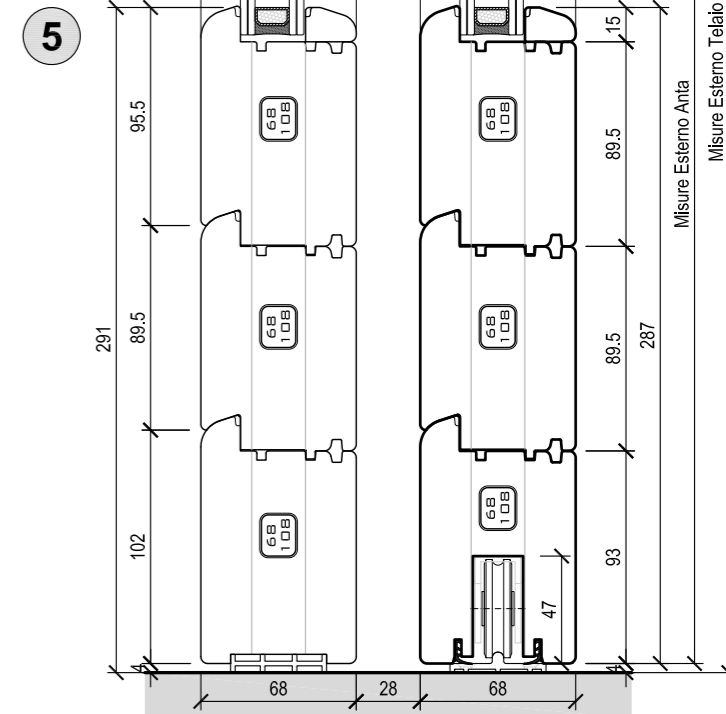
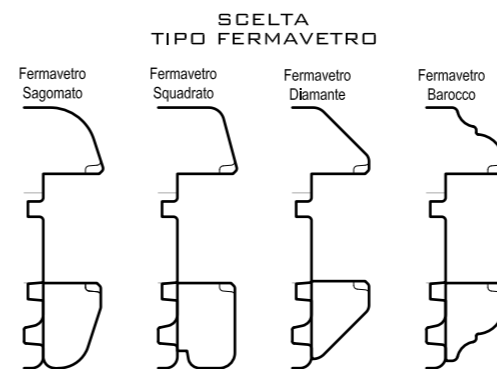
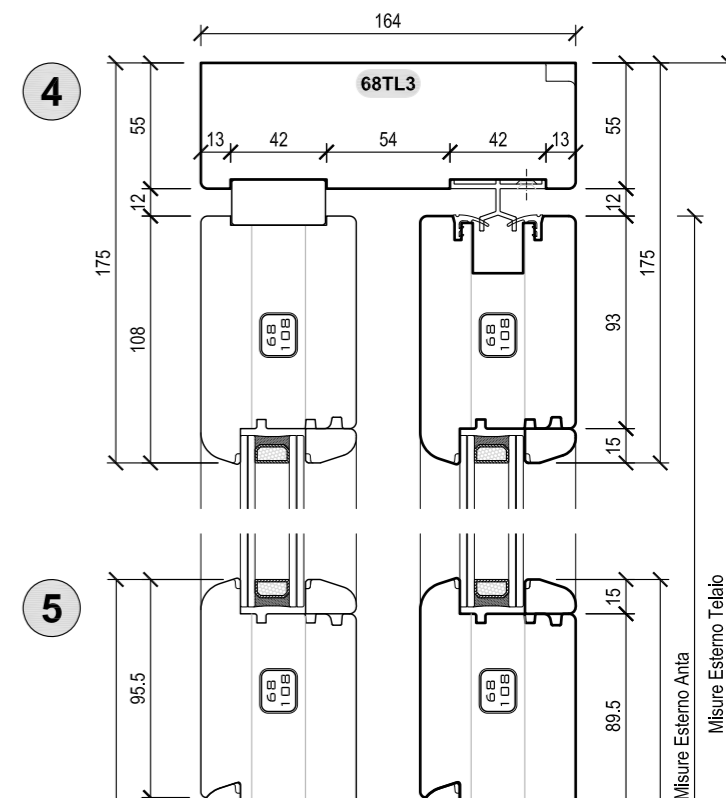
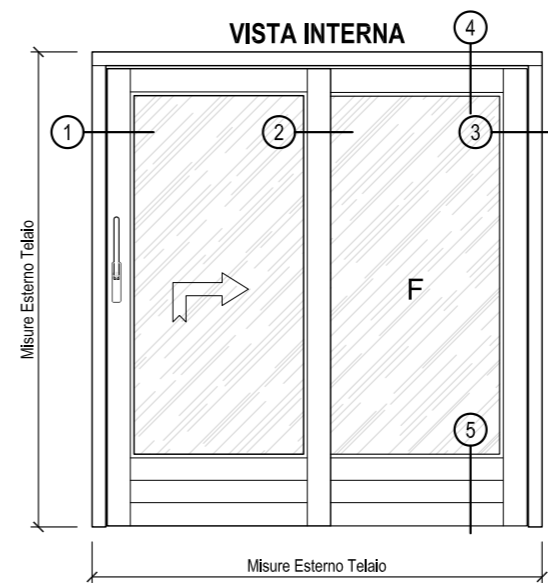
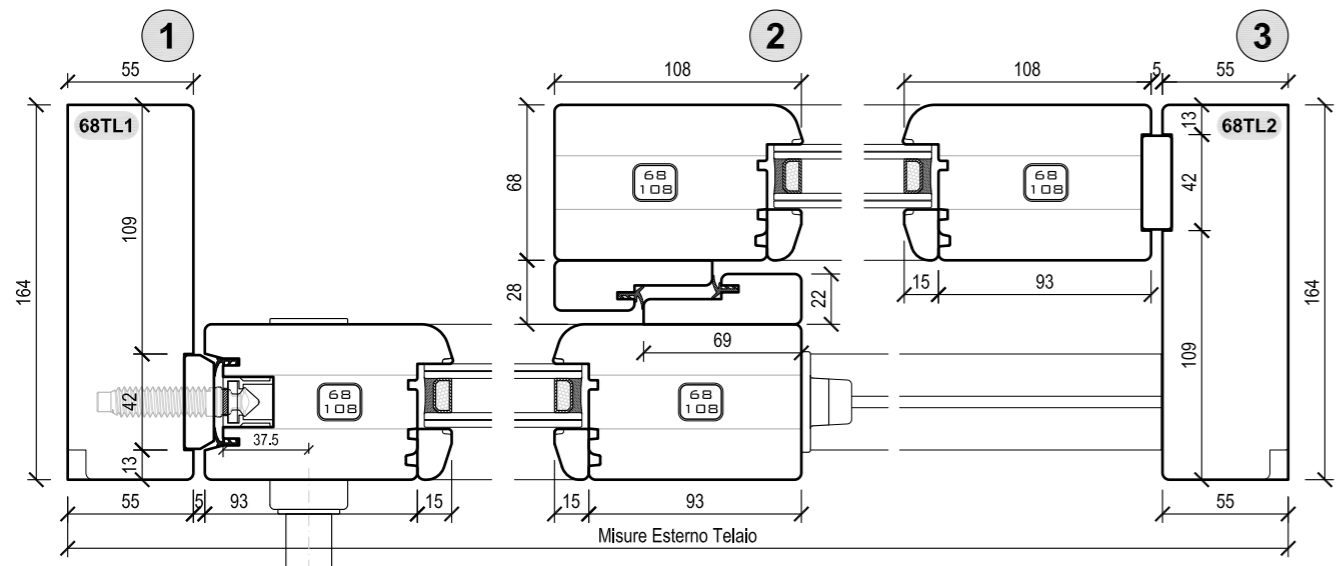
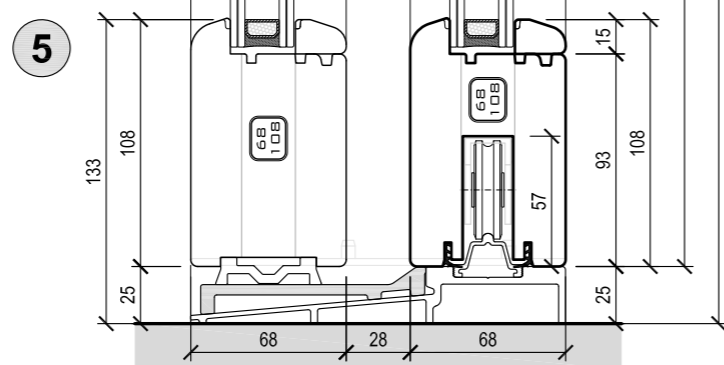
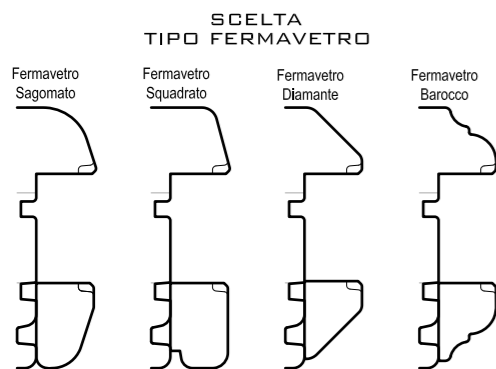
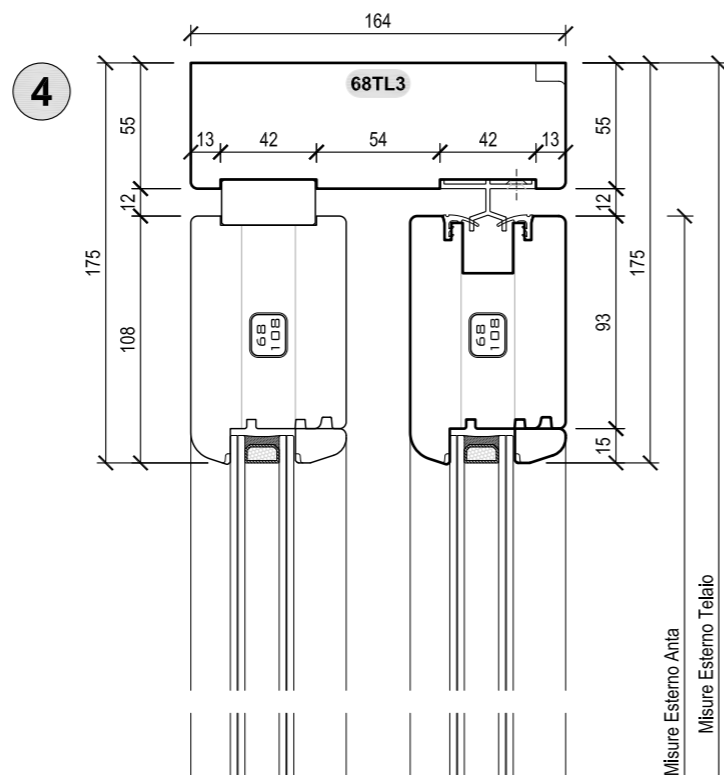
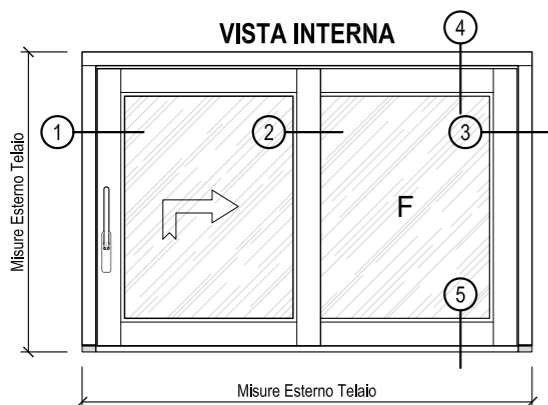
SCELTA  
TIPO FERMAVETRO

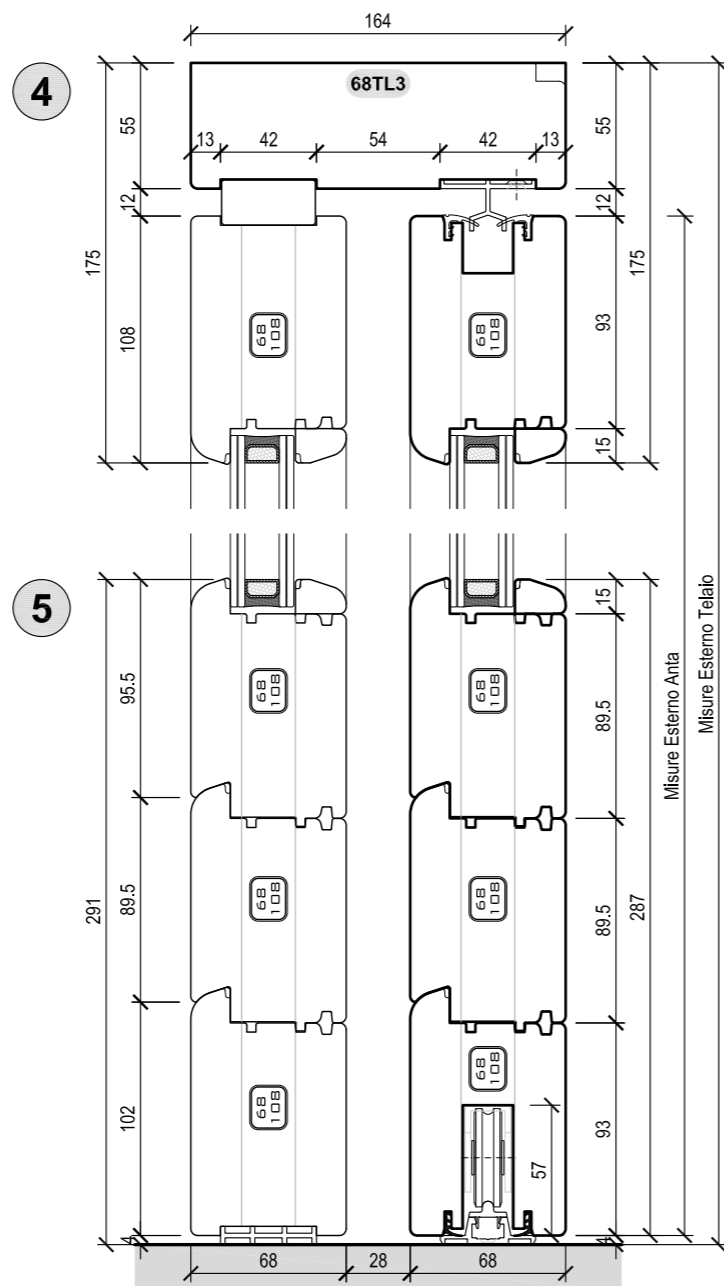
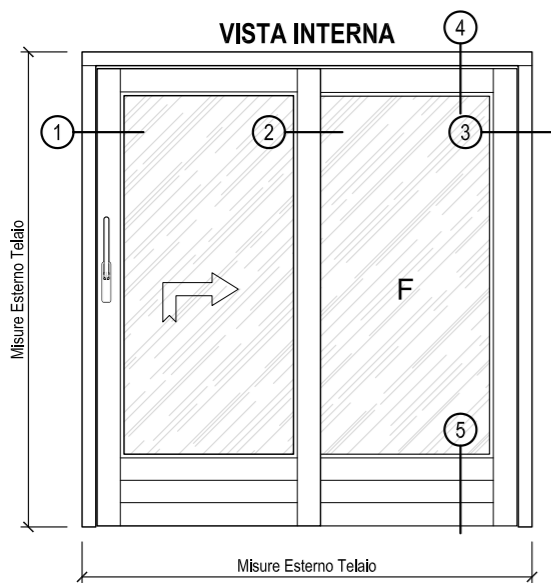


SCELTA  
TIPO FERMAVETRO

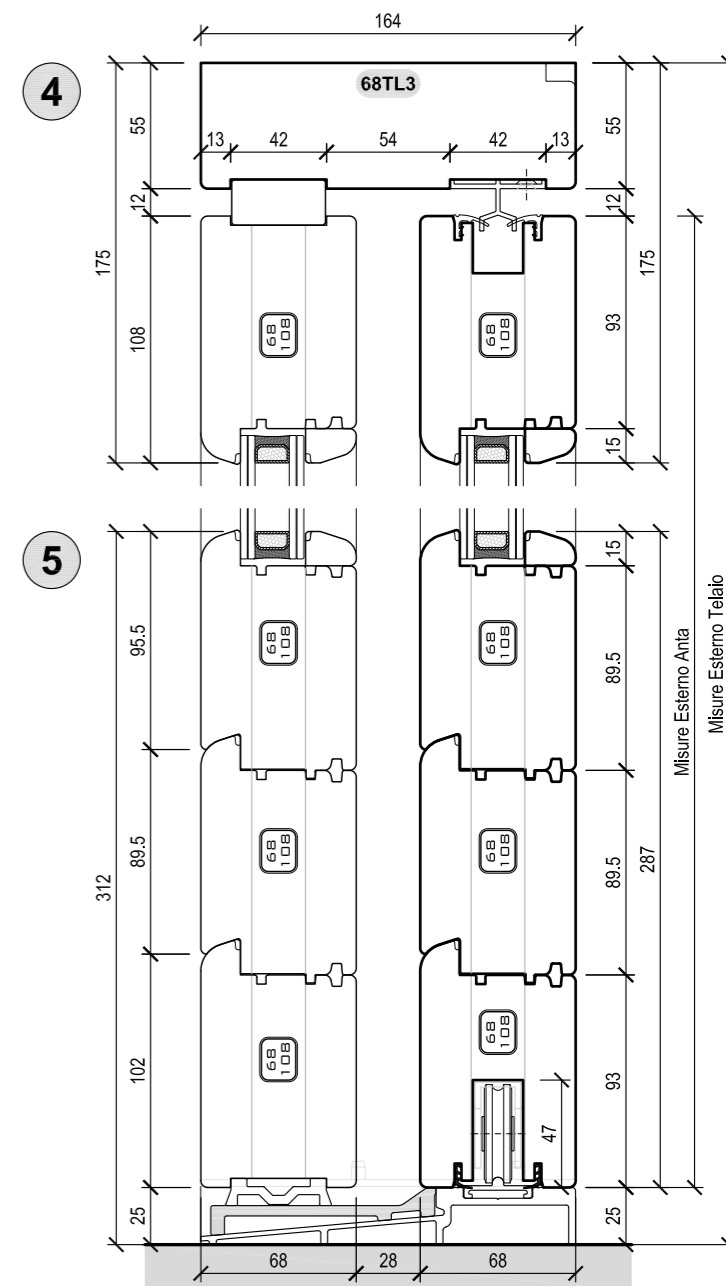
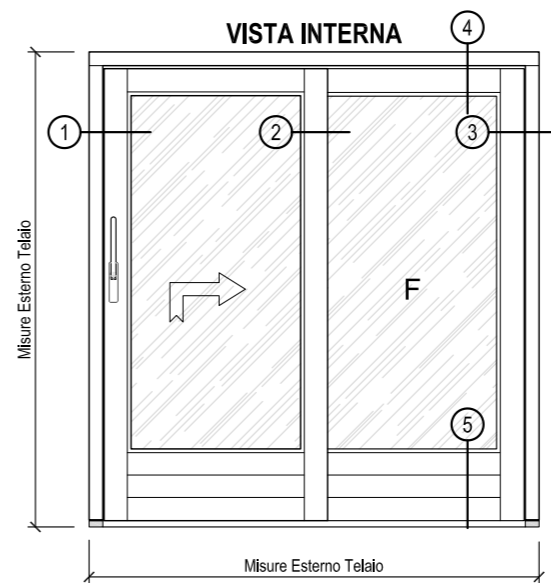
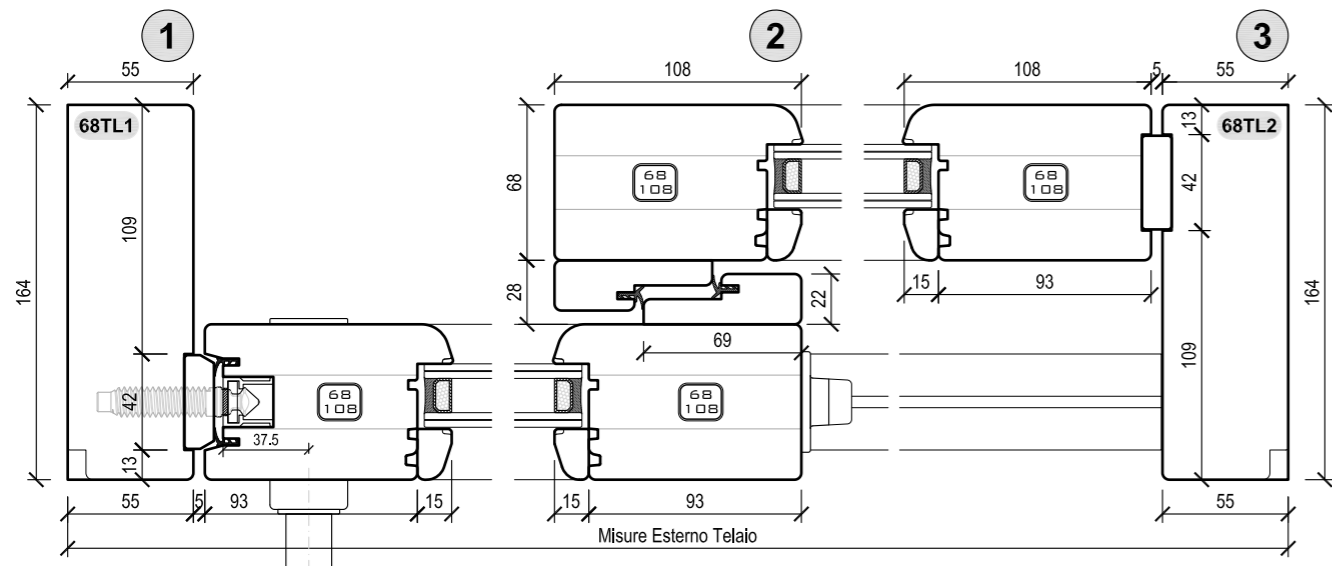
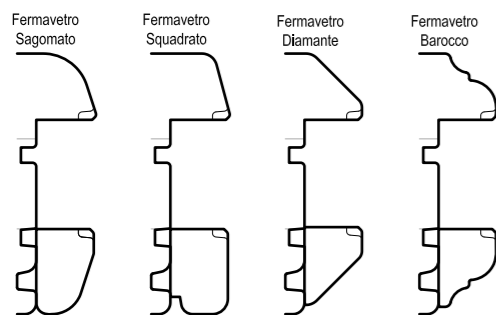




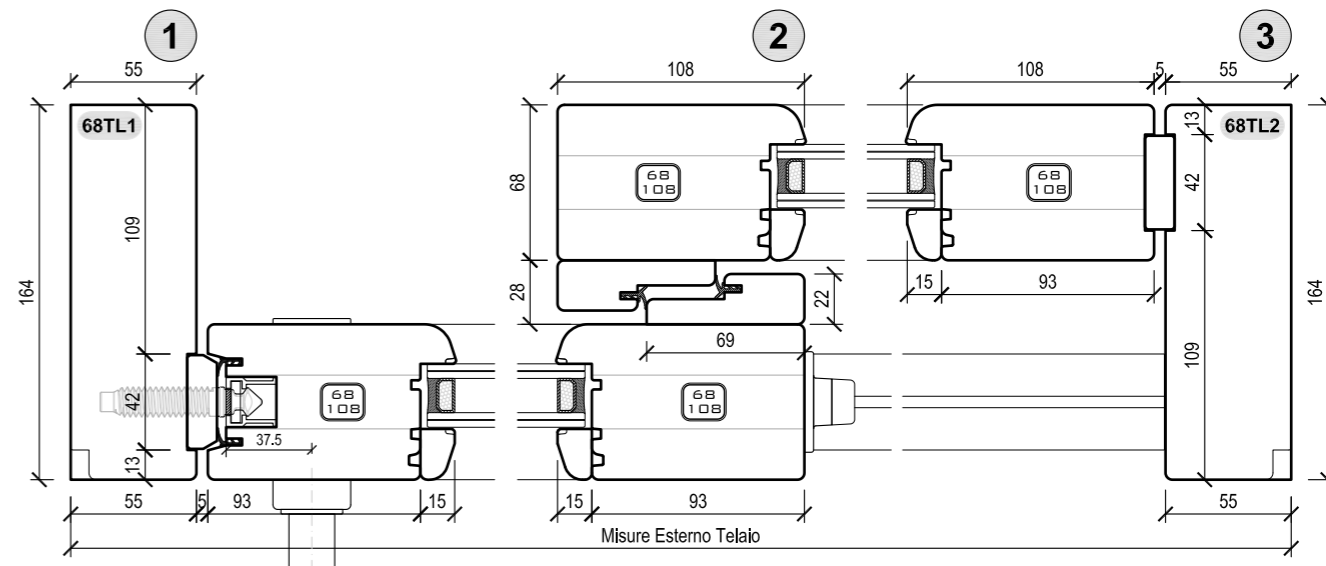
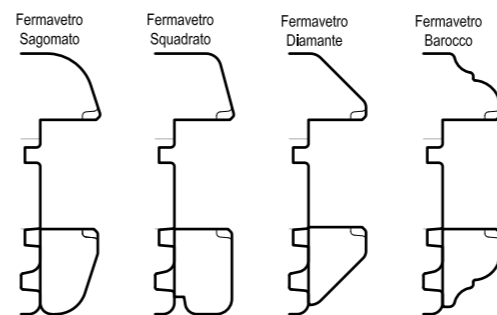


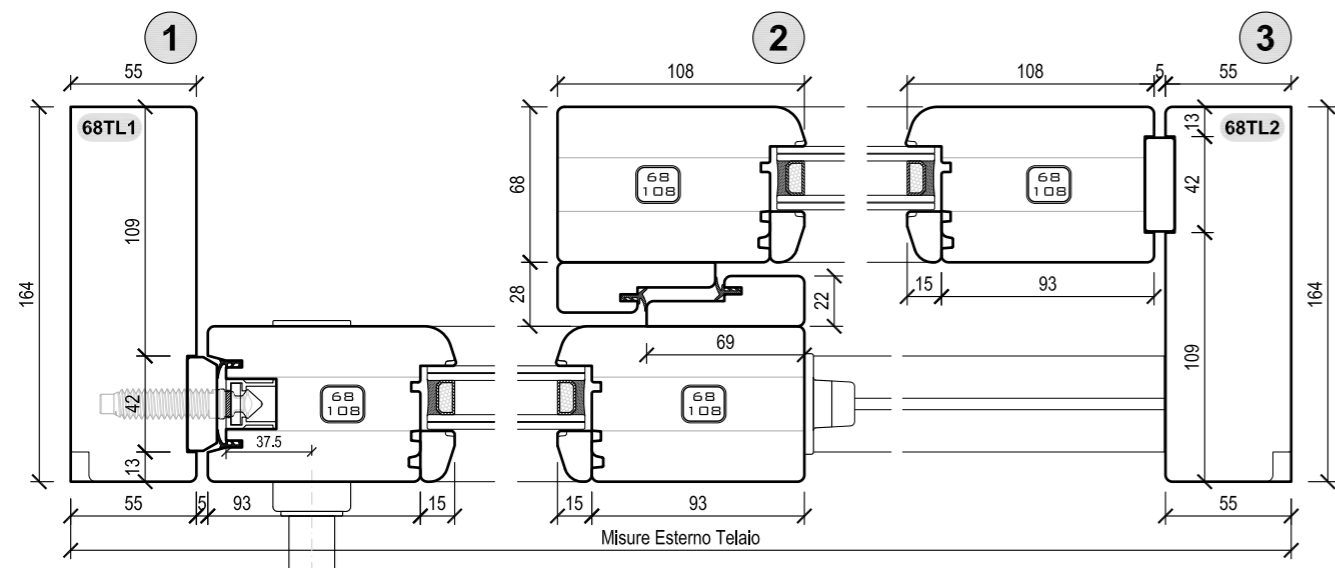
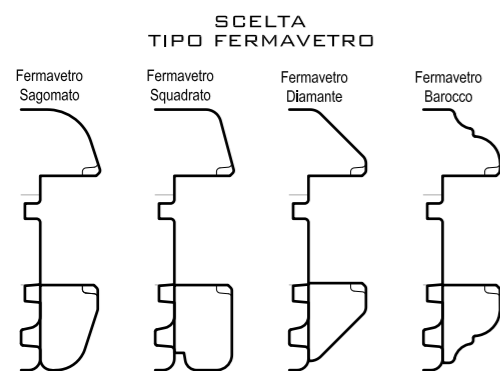
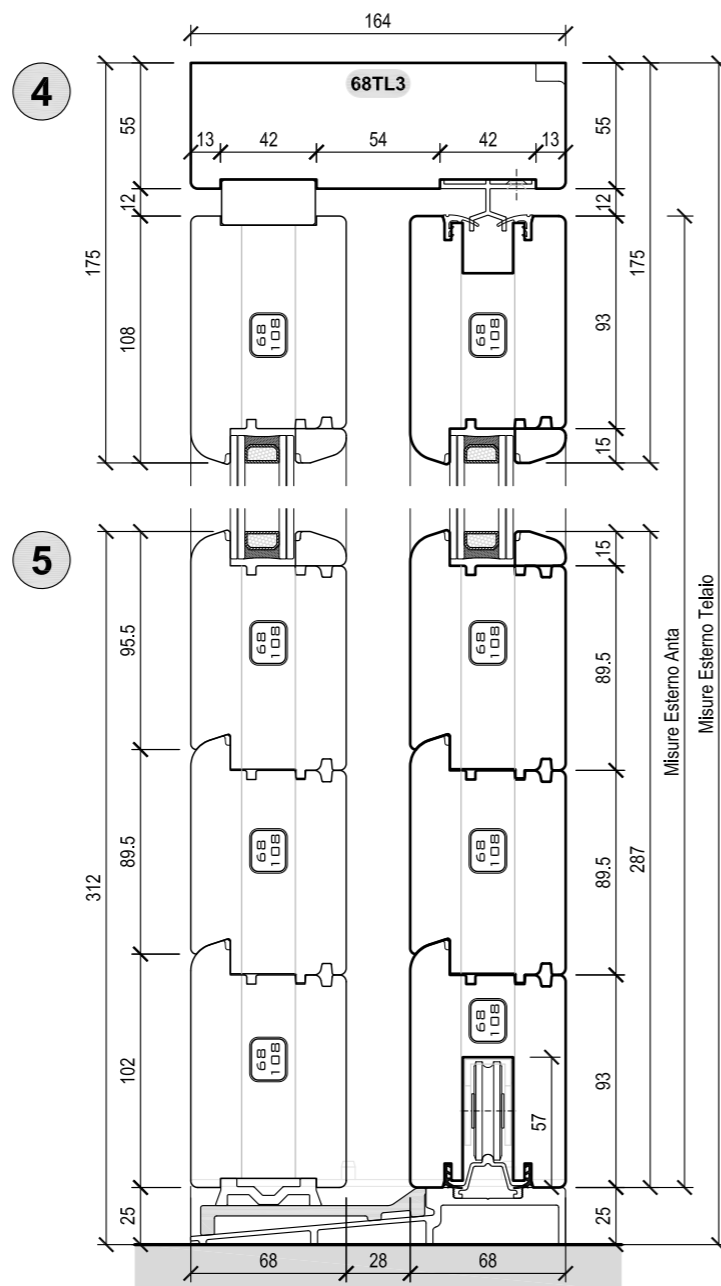
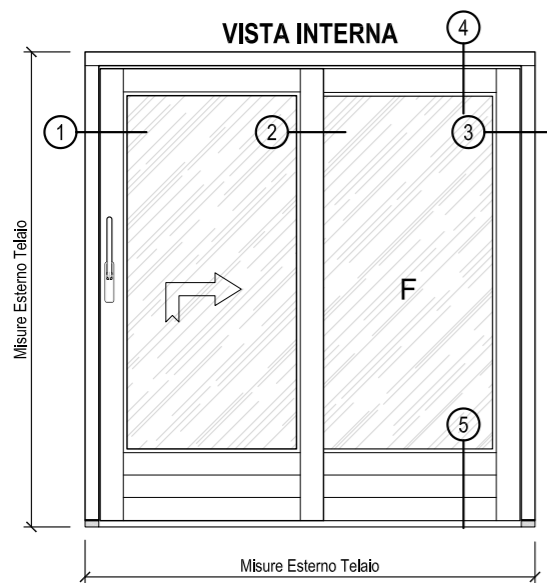


**SCELTA TIPO FERMAVETRO**



**SCELTA TIPO FERMAVETRO**





MANUALE  
TECNICO

F68M



**FINNOVA**  
SERRAMENTI

**Finnova srl**  
Via dei Prai 4 M/N  
31033 Castelfranco Veneto  
Treviso - Italy

T +39 0423 453105  
F +39 0423 747287  
info@finnovasrl.it  
[www.finnovasrl.it](http://www.finnovasrl.it)

