

MANUALE
TECNICO

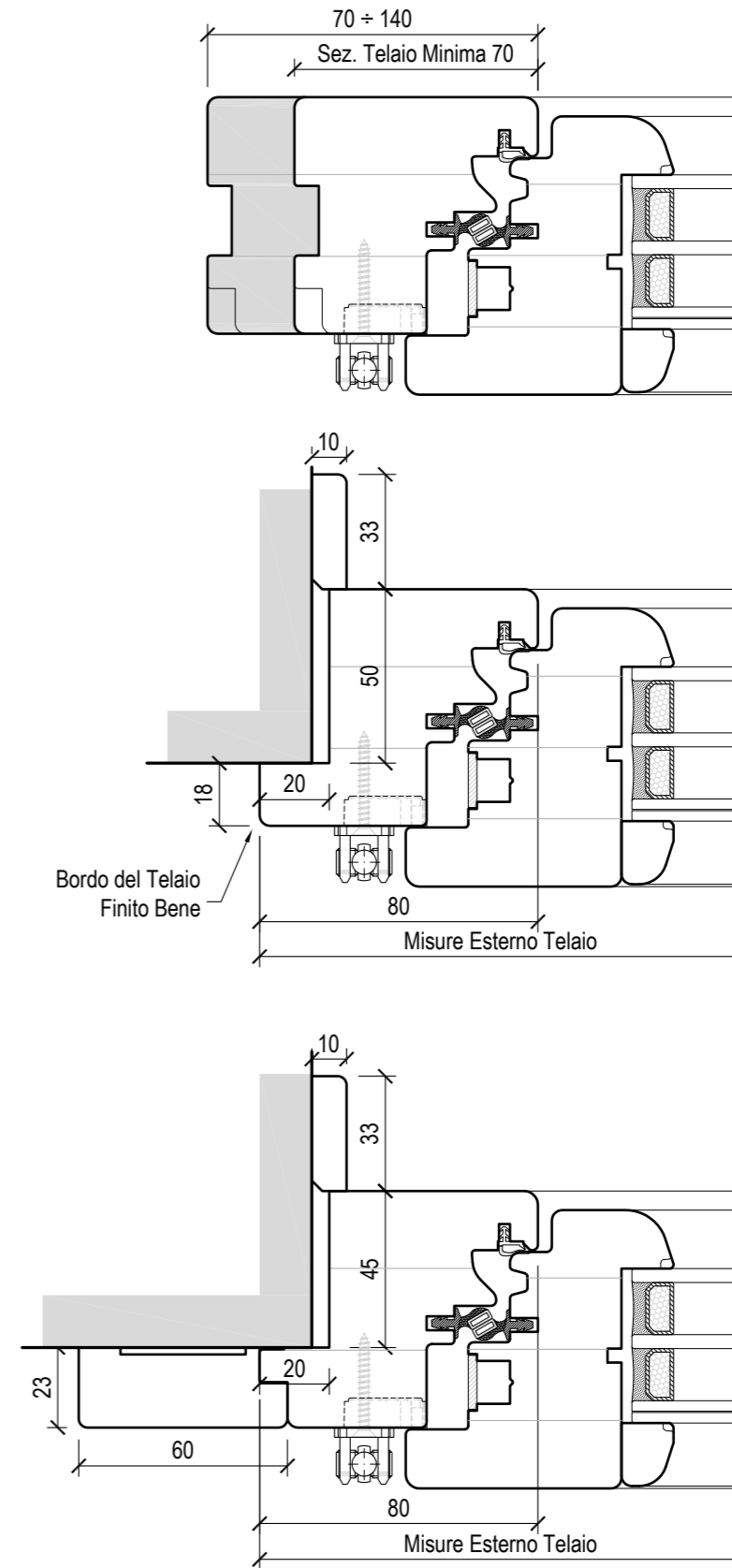
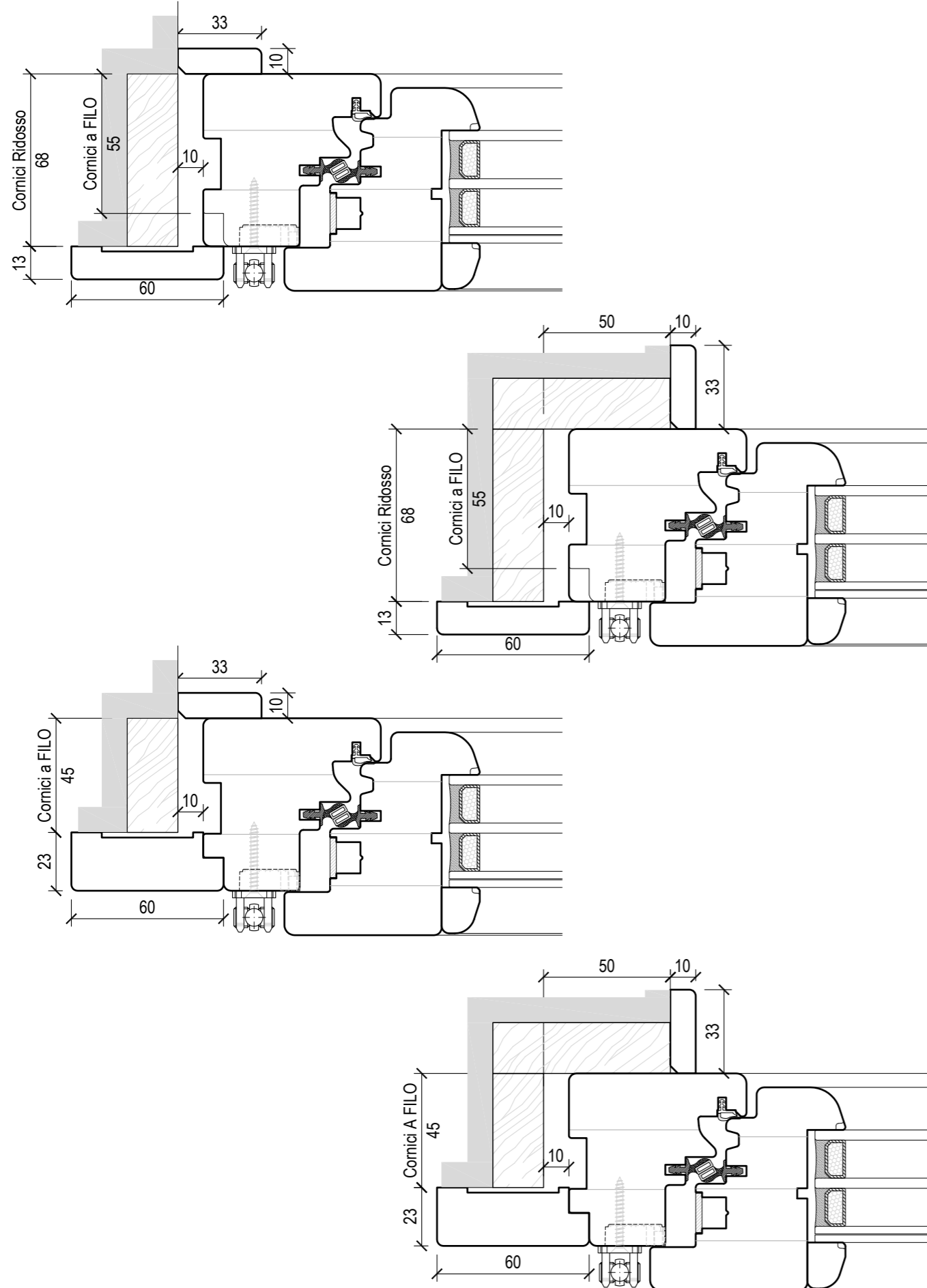
F80M



CAPITOLATO

Finestre e portefinestre per esterni, realizzate mediante profili in legno lamellare, conforme alla Classe D4 per la resistenza delle linee di colla, secondo le normative previste. Sezione Telaio spessore 68x80 mm e sezione dell'anta 80x87 mm. I profili sono uniti mediante spine cilindriche in legno per garantire una maggiore stabilità e superficie d'incollaggio a finestra assemblata. Traverso inferiore con gocciolatoio in alluminio rivestito in legno. Cornici di serie interne 60x13 esterne 33x10 realizzate in legno massello. Guarnizioni di tenuta montate a doppio anello con soluzione di continuità sia su telaio fisso che su telaio mobile, in gomma termoplastica a norme UNI 8649 contenenti magneti naturali permanenti. Tali guarnizioni, in funzione della loro reciproca attrazione, tra anello fisso e anello mobile, permettono una tenuta termoacustica ed idropneumatica illimitata. Ferramenta per la movimentazione ed apertura delle ante realizzata in acciaio e zinco pressofuso con successivo trattamento di zincatura e passivazione secondo norme DIN 50941. Tutti i componenti vengono successivamente provvisti di uno strato di cera che aumenta la protezione anticorrosione e la scorrevolezza dei singoli pezzi. Di serie apertura a ribalta con dispositivo di microventilazione. La ferramenta di portata è realizzata con cerniere regolabili tridimensionalmente per una perfetta registrazione, già comprese di coperture con guaine plastiche in vari colori. L'infisso monta triplo vetro doppia camera dello spessore totale di 41mm, realizzato con lastre di vetro semplici o accoppiate, unite da distanziale in alluminio. Le lastre possono essere basso emissive e nella camera può essere inserito gas argon e impiegate canaline a bordo caldo per migliorare le prestazioni termiche arrivando a dei valori Ug vetro 0,5-0,6. La verniciatura viene realizzata in modo completamente naturale all'acqua, mediante impregnazione a flow coating, fondo a spruzzo, carteggiatura e verniciatura finale sempre a spruzzo.

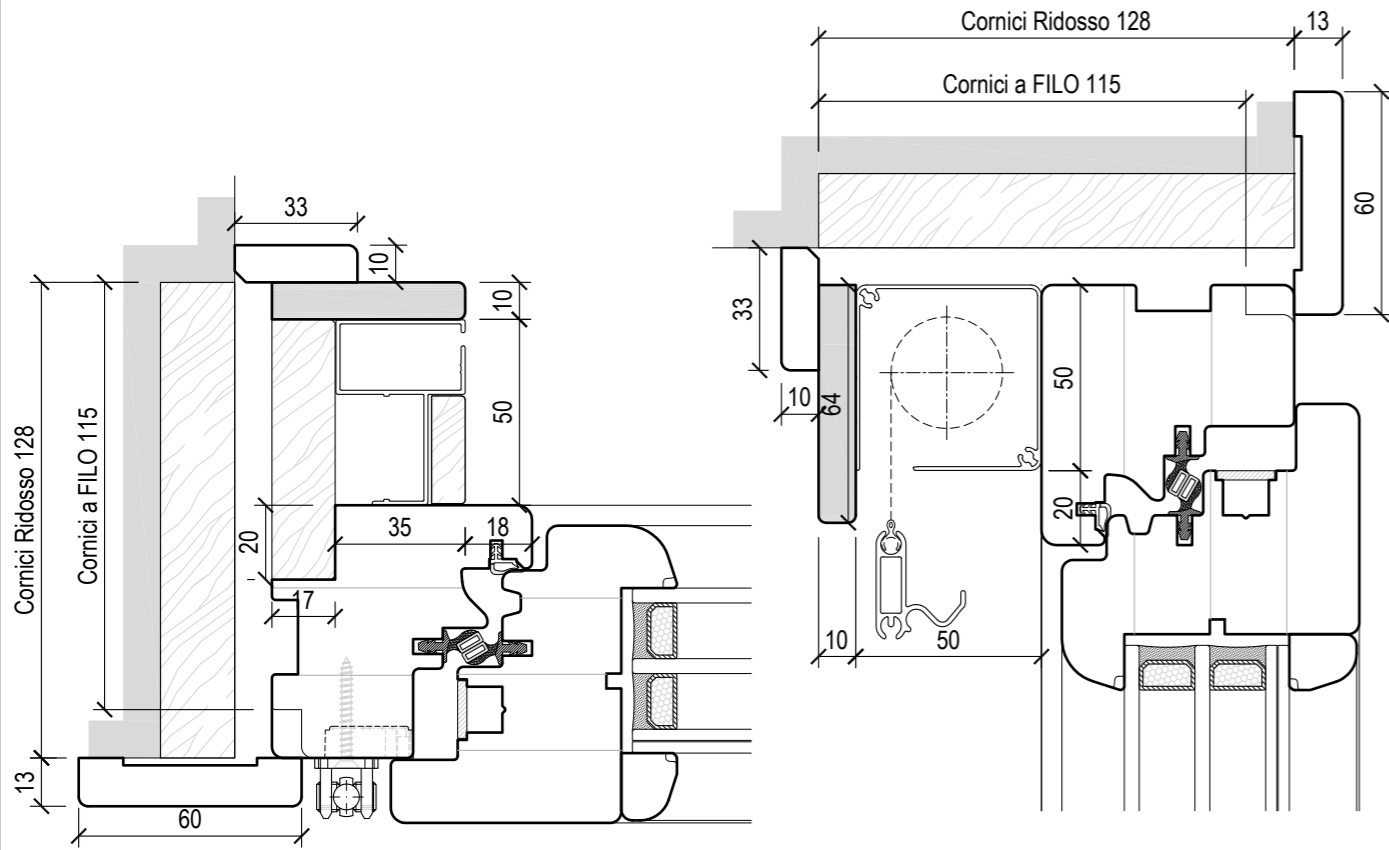
F80M



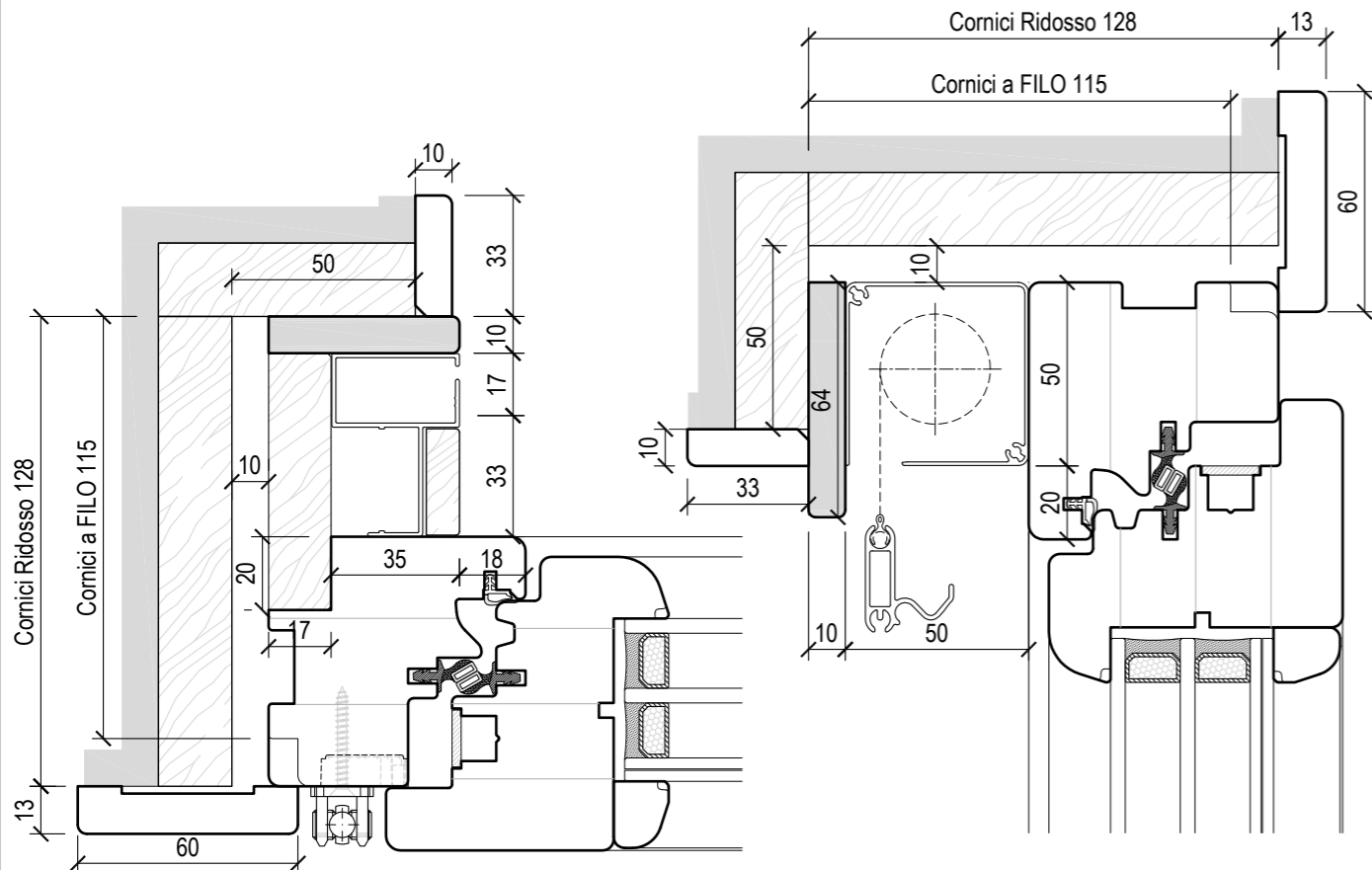
N.B. Le soluzioni sopra rappresentate sono alcuni esempi di situazioni che si possono verificare in cantiere.

È possibile studiare soluzioni differenti, con supporto dell'ufficio tecnico/commerciale.

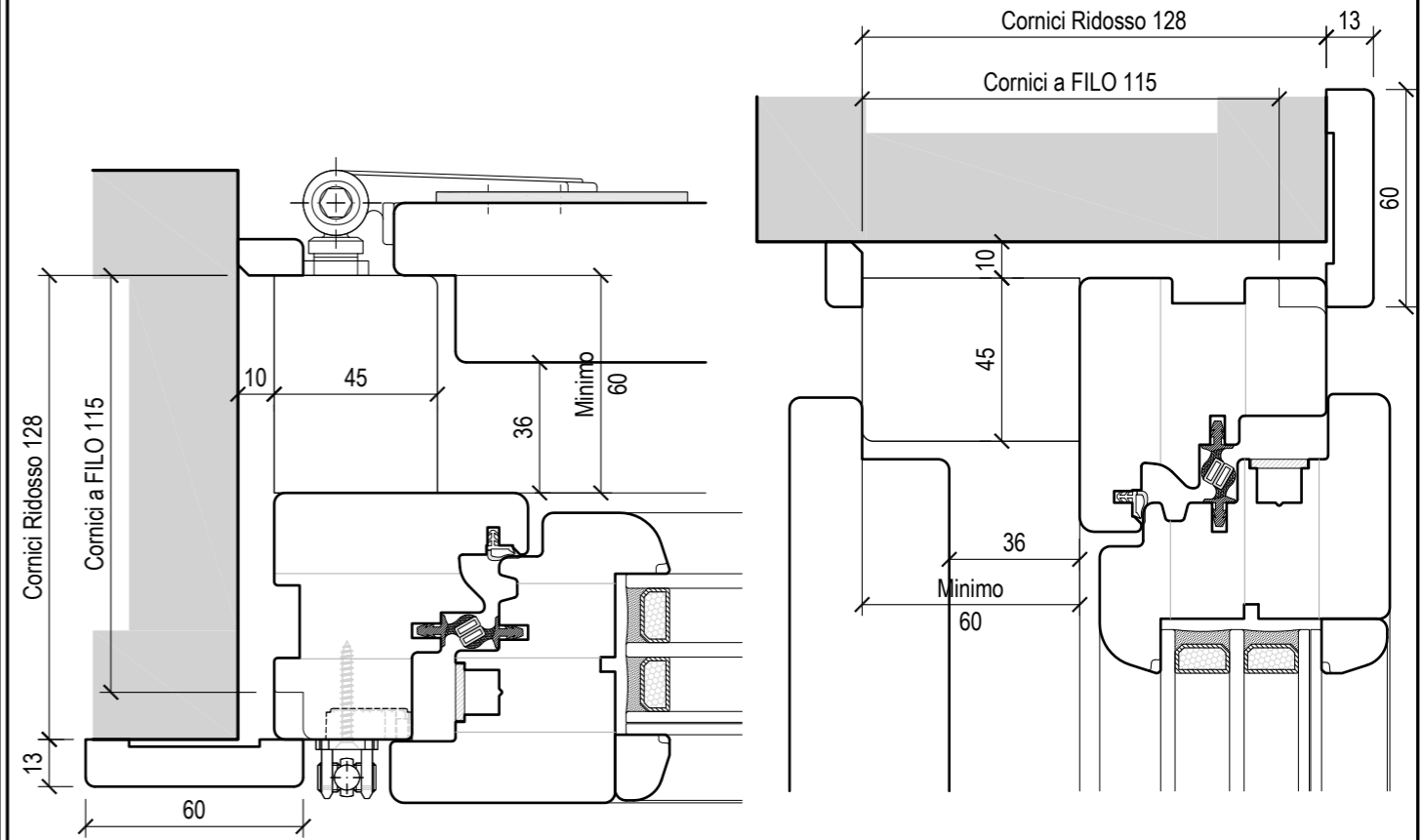
FALSO TELAIO DRITTO



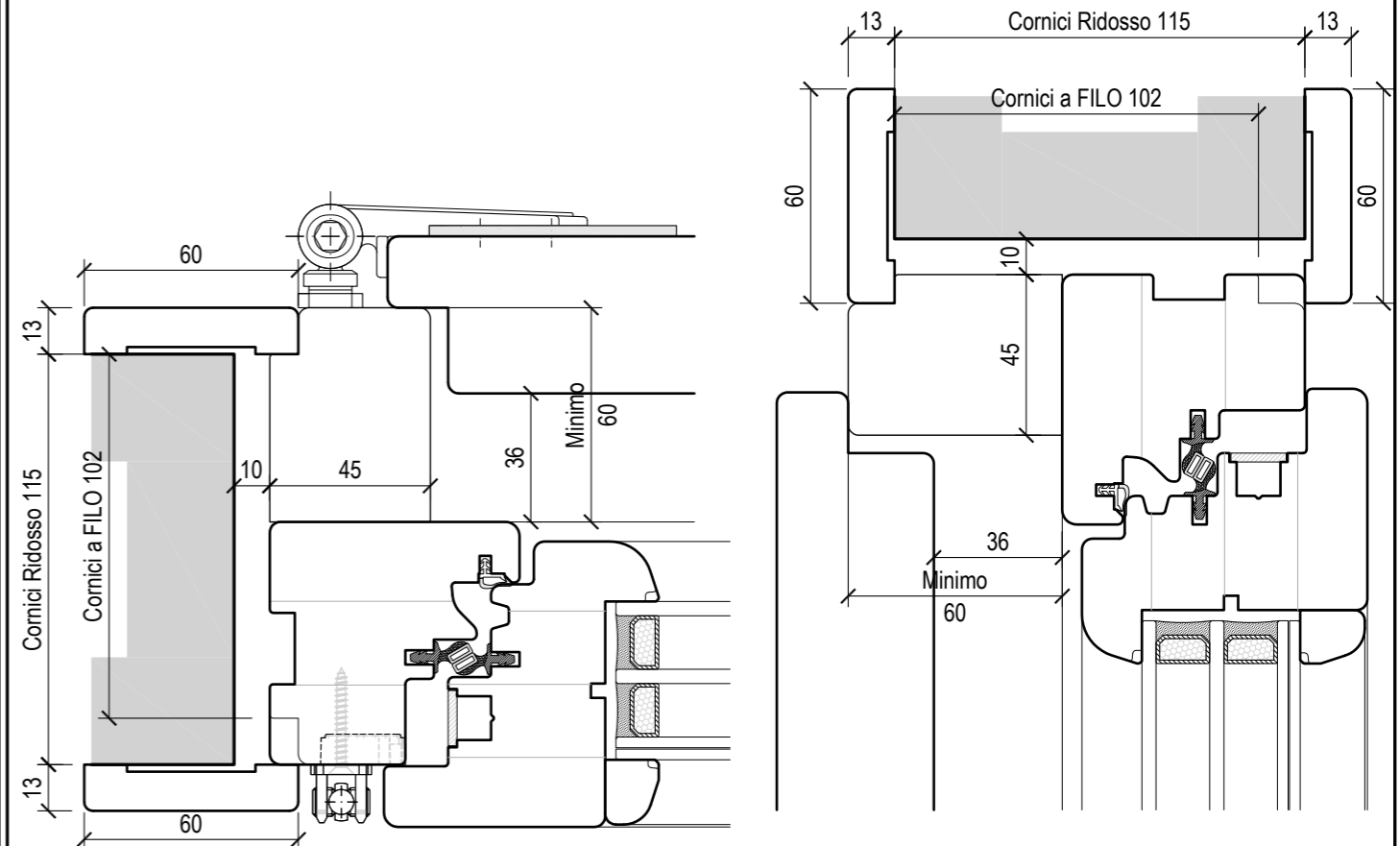
FALSO TELAIO AD "L"



MONOBLOCCO A CENTRO MURO

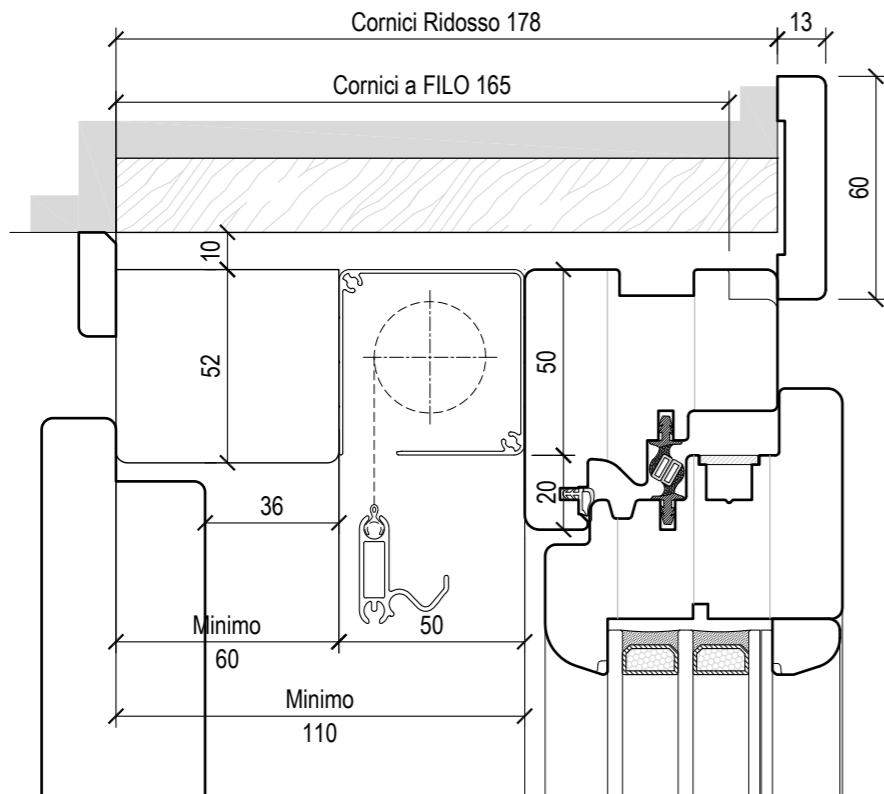
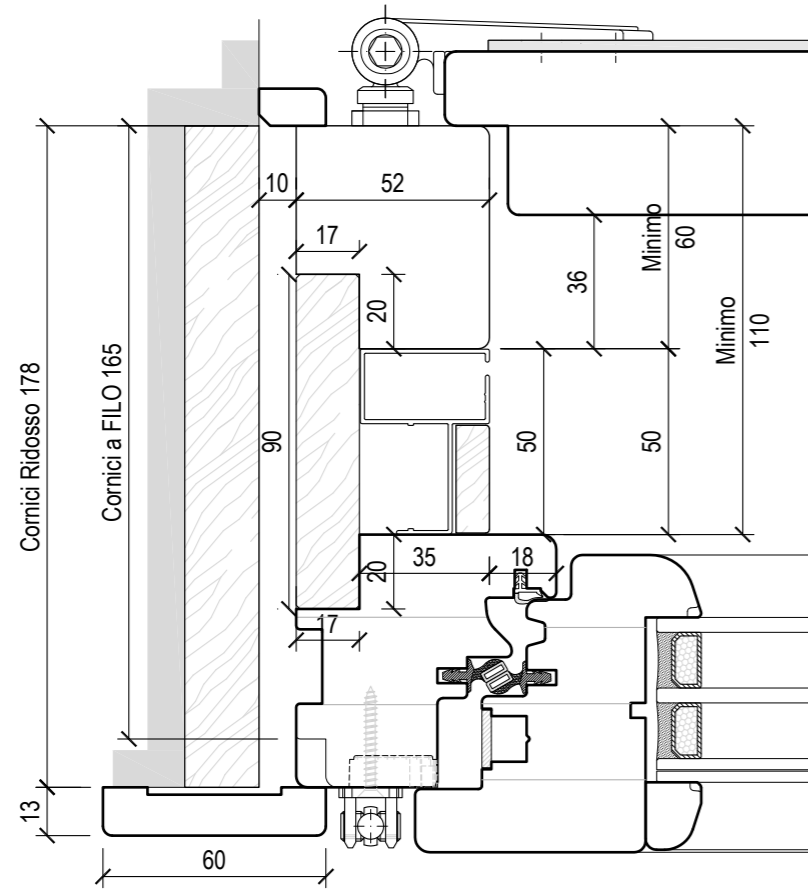


MONOBLOCCO A FILO MURO ESTERNO



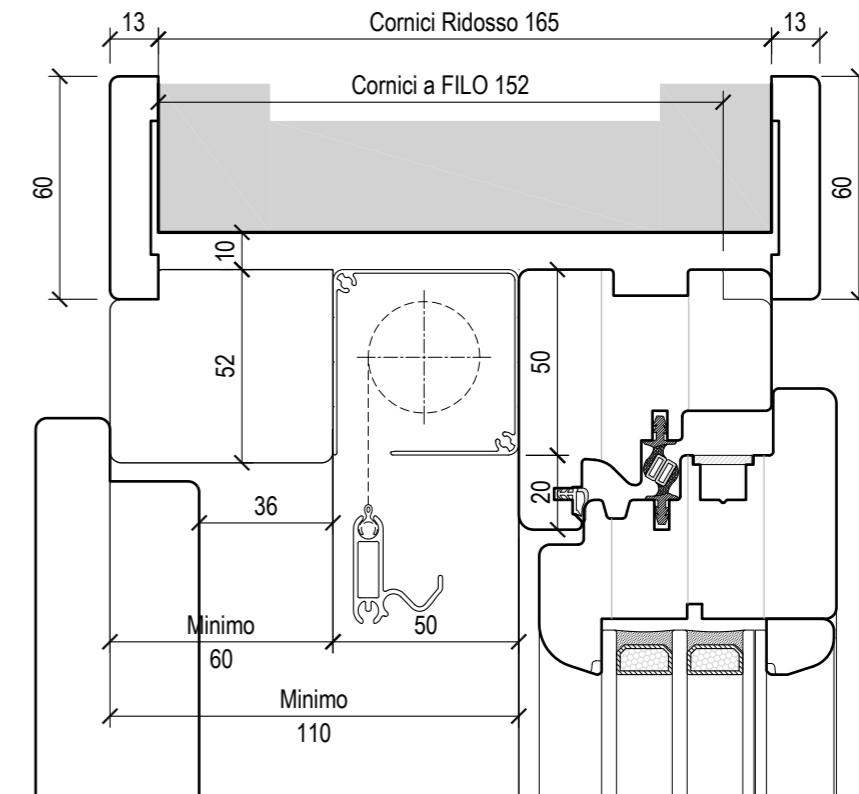
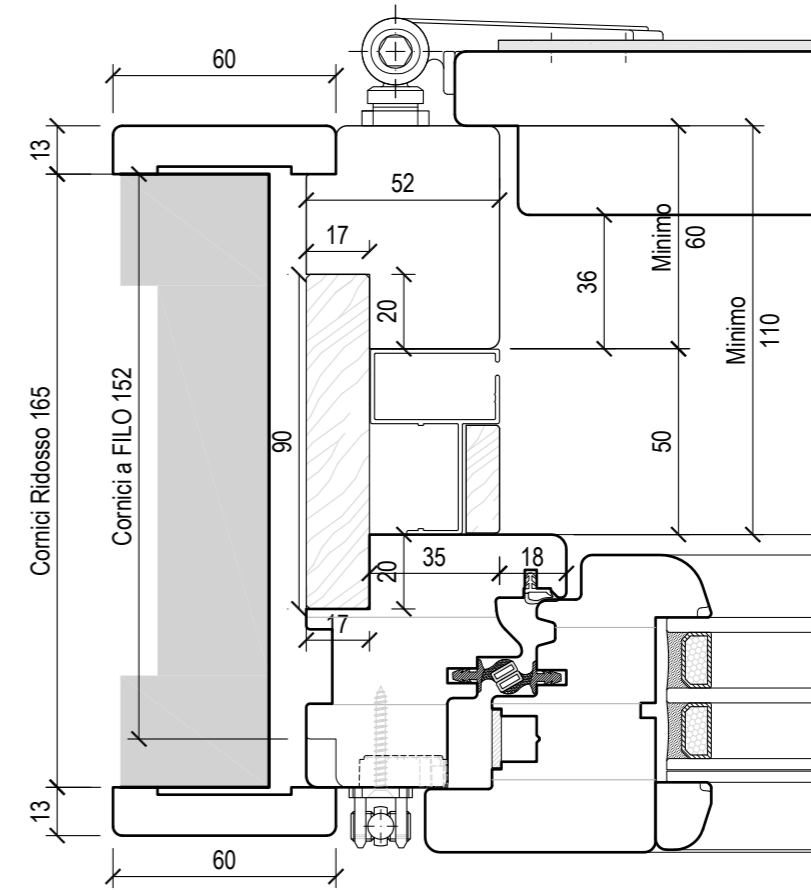
N.B. In presenza di scuro con Mottura l'imbotte va ulteriormente ringrossato di 30mm

MONOBLOCCO A CENTRO MURO

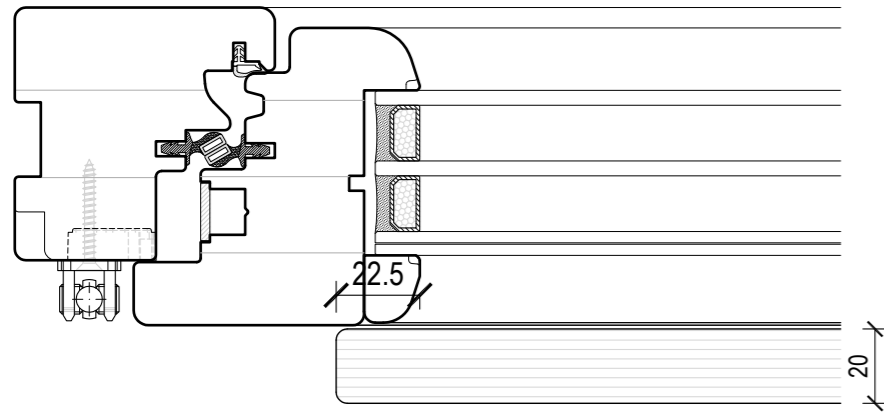


N.B. In presenza di scuro con Mottura l'imbotte va ulteriormente ringrossato di 30mm

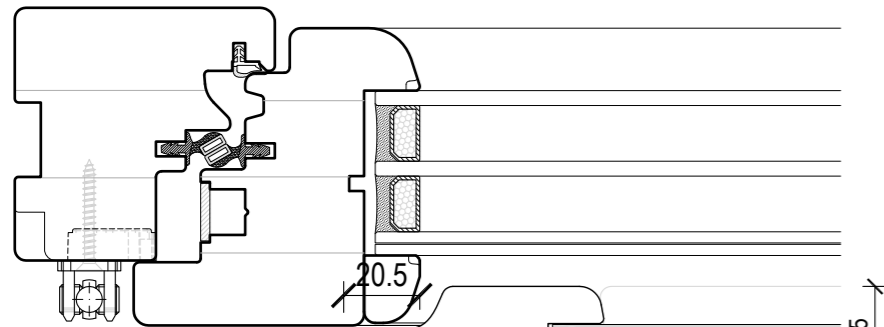
MONOBLOCCO A FILO MURO ESTERNO



N.B. In presenza di scuro con Mottura l'imbotte va ulteriormente ringrossato di 30mm

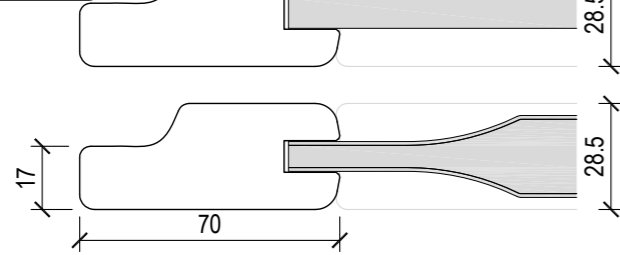


SCURETTO INTERNO
MOD.PANNELLO LISCIO
(Valido x Tutte le tipologie di
Fermavetro)

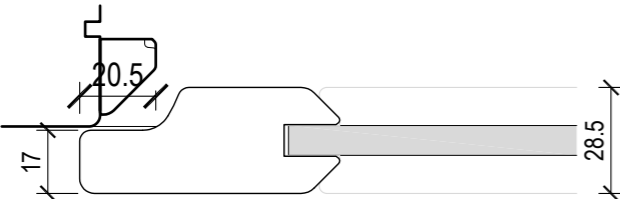


SCURETTO INTERNO
MOD.INTELAIATO LISCIO

Sagoma Telaietto
SCURETTO
INTELAIATO
su Fermavetro Sagomato
Fermavetro Squadrato

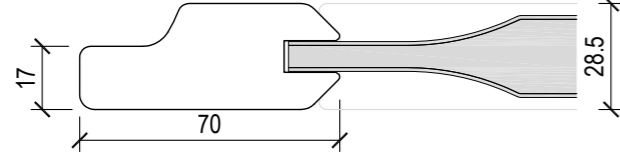


SCURETTO INTERNO
MOD.INTELAIATO BUGNATO

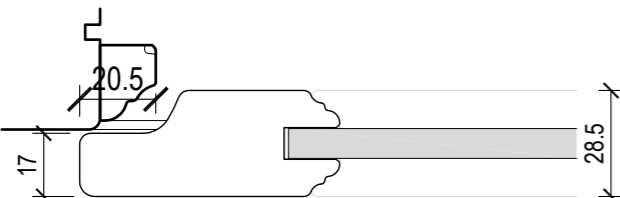


SCURETTO INTERNO
MOD.INTELAIATO LISCIO

Sagoma Telaietto
SCURETTO
INTELAIATO
su Fermavetro Diamante

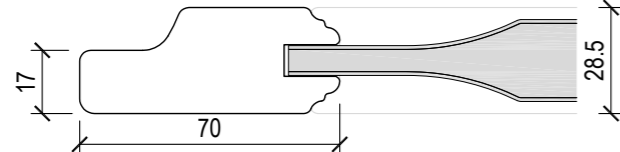


SCURETTO INTERNO
MOD.INTELAIATO BUGNATO

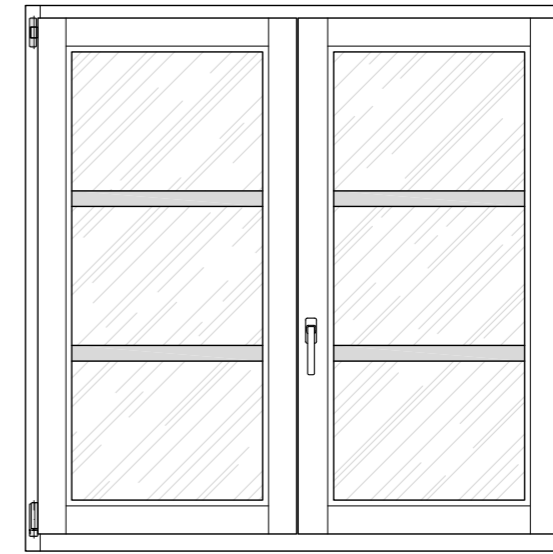


SCURETTO INTERNO
MOD.INTELAIATO LISCIO

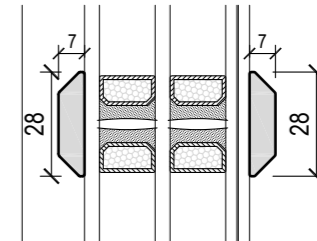
Sagoma Telaietto
SCURETTO
INTELAIATO
su Fermavetro Barocco



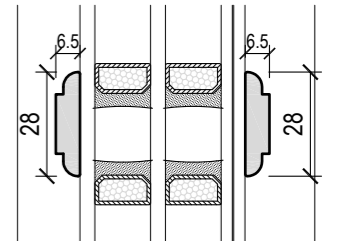
SCURETTO INTERNO
MOD.INTELAIATO BUGNATO



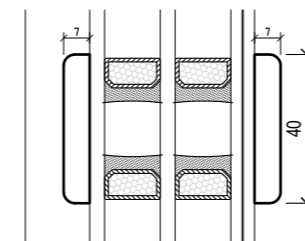
Fuseruolo
DIAMANTE Alternativa



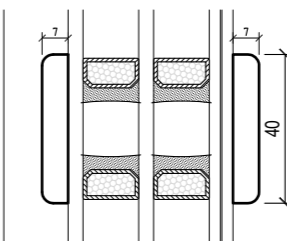
Fuseruolo
BAROCCO Alternativa



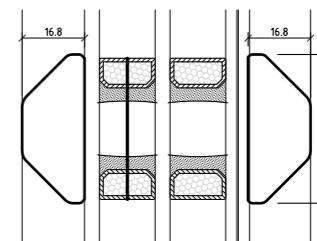
Soluzione Standard
FV Squadrato



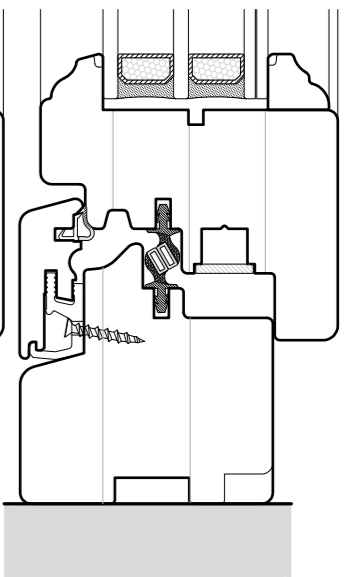
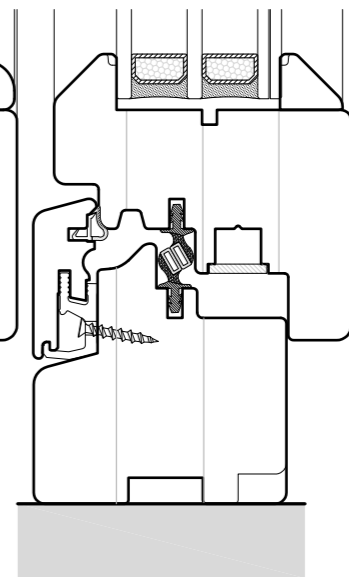
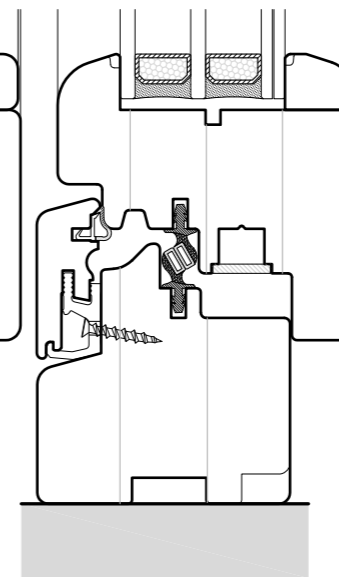
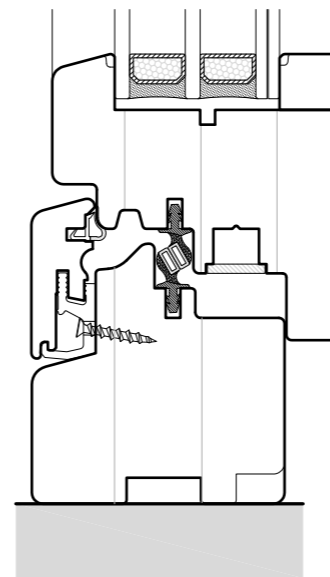
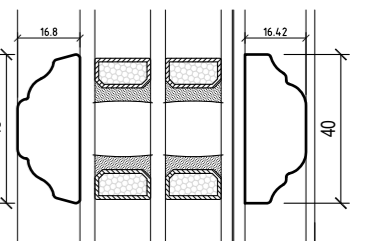
Soluzione Standard
FV Sagomato

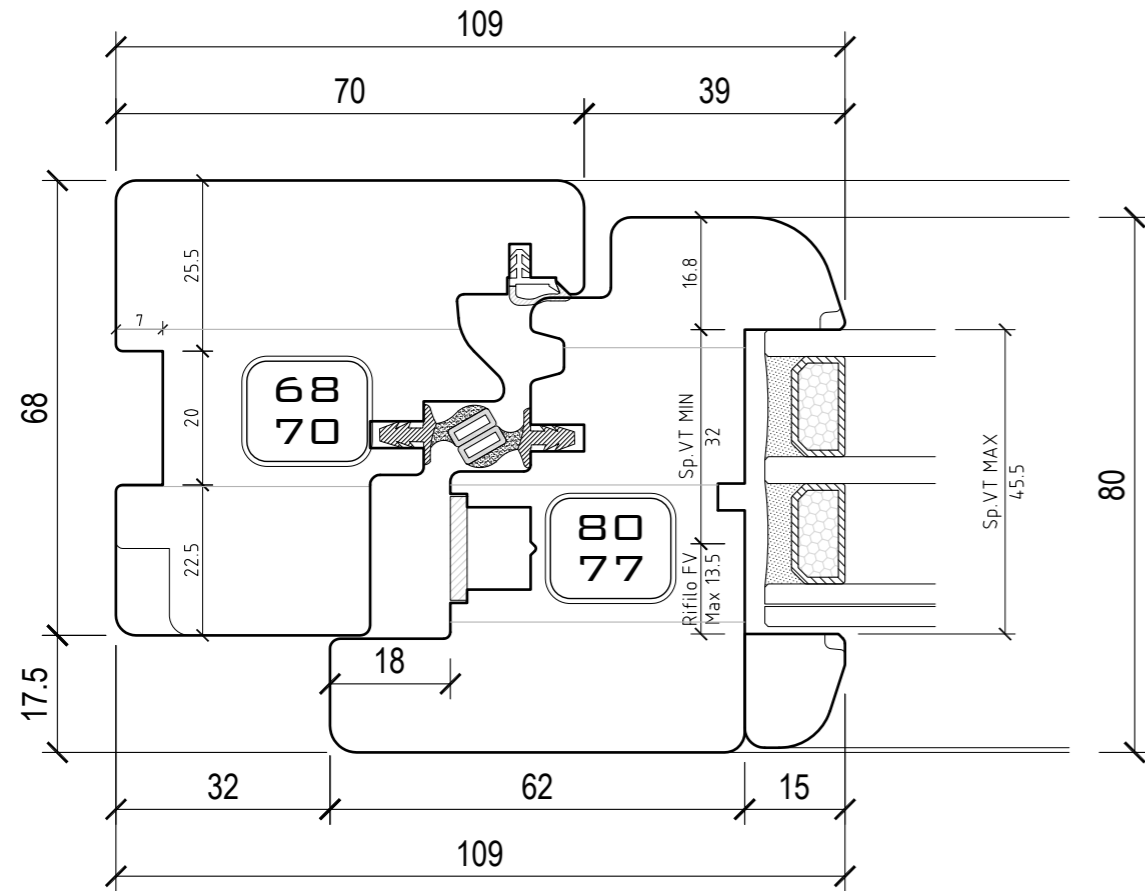


Soluzione Standard
FV Diamante

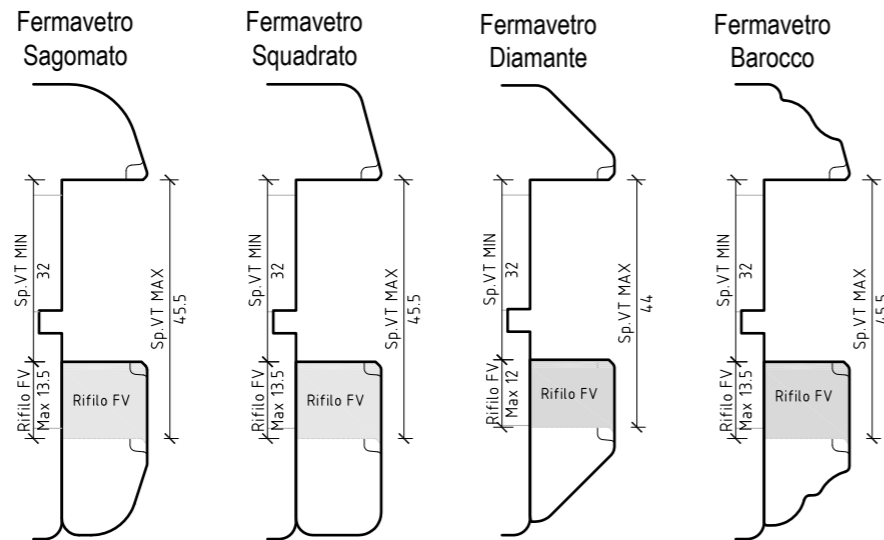


Soluzione Standard
FV Barocco

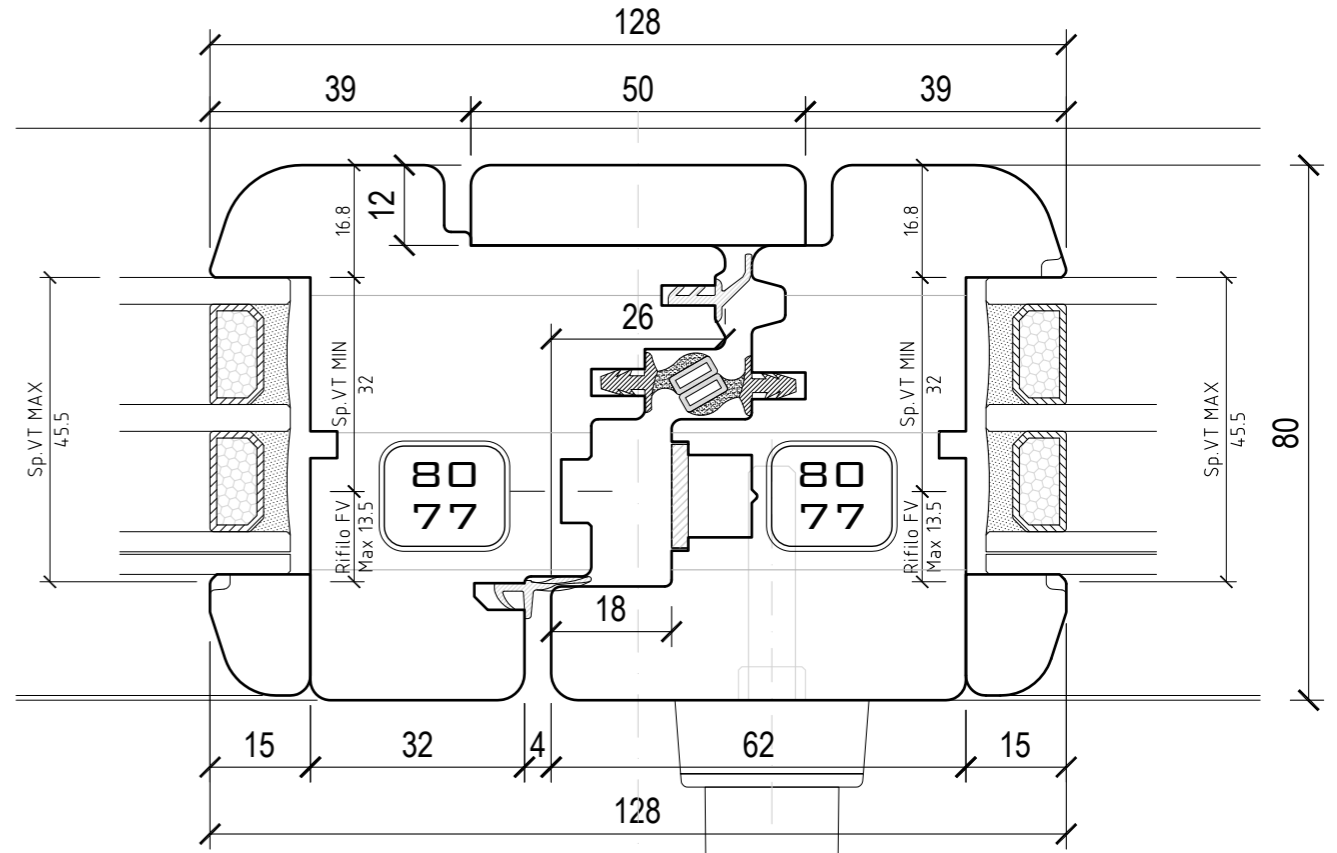
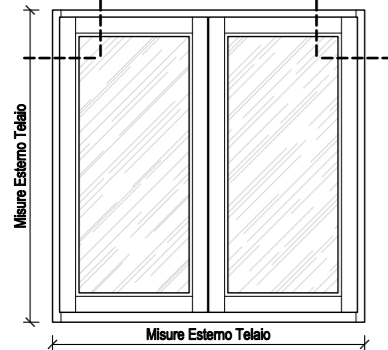




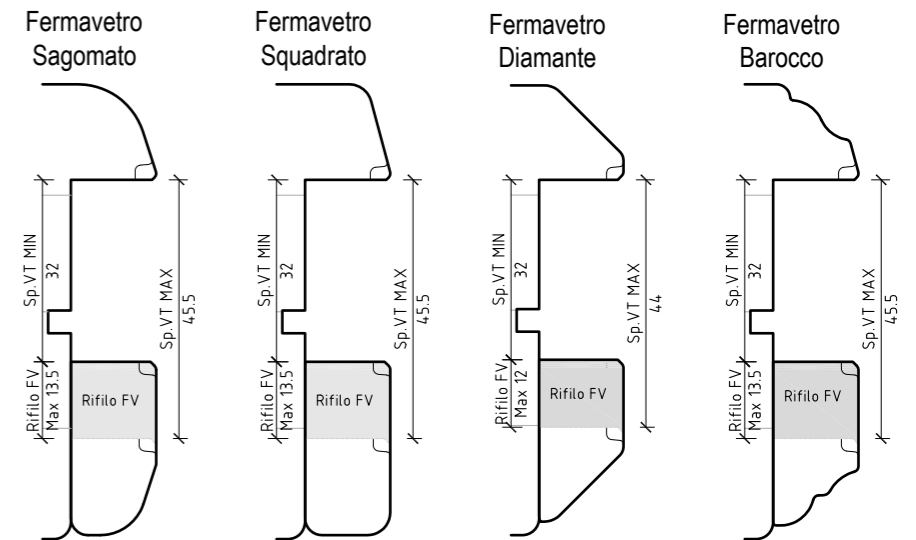
SCELTA TIPO FERMAVETRO



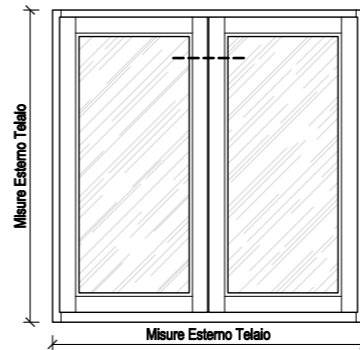
VISTA INTERNA

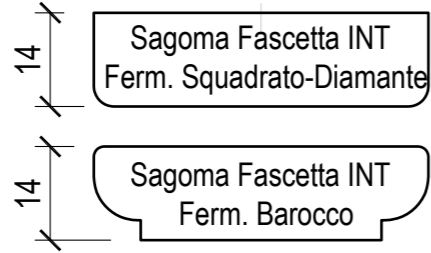
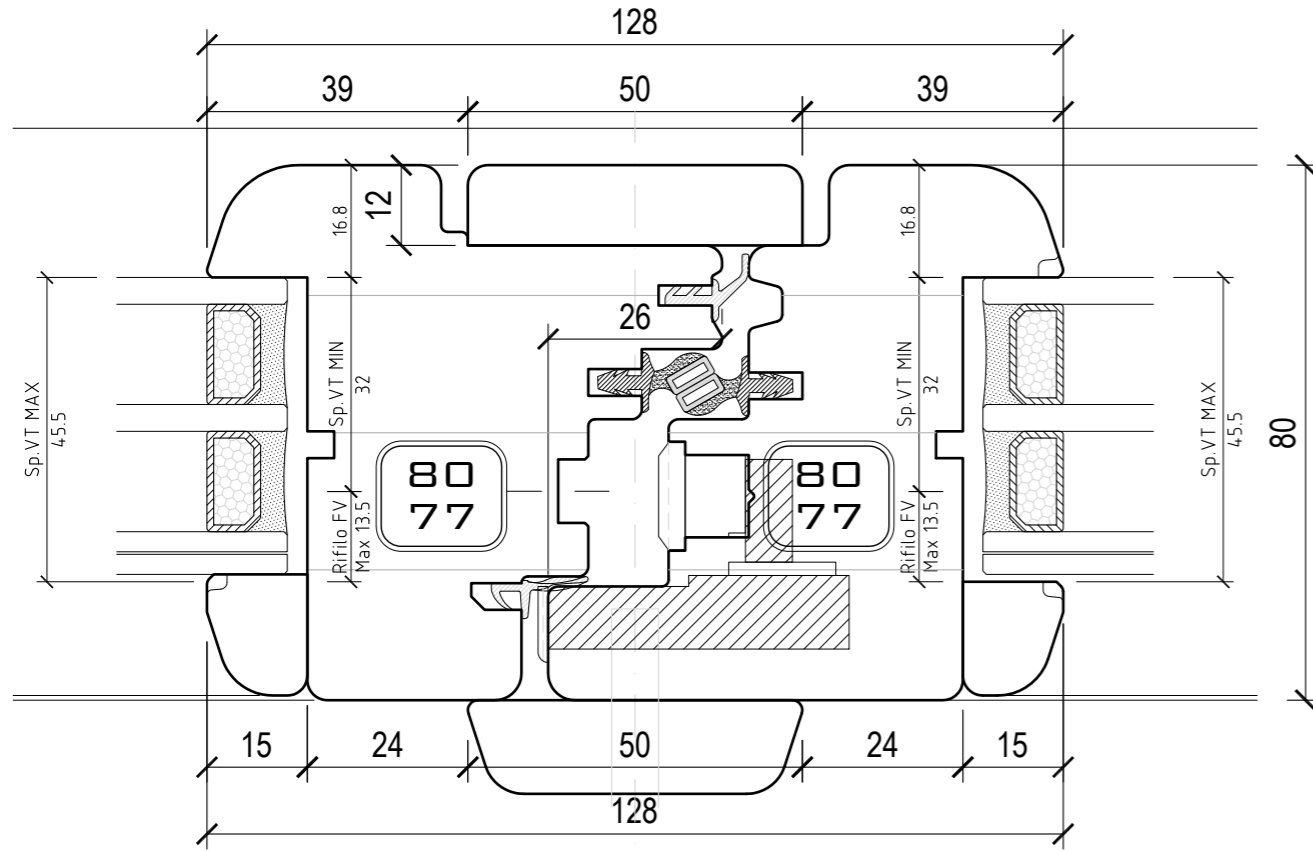


SCELTA TIPO FERMAVETRO

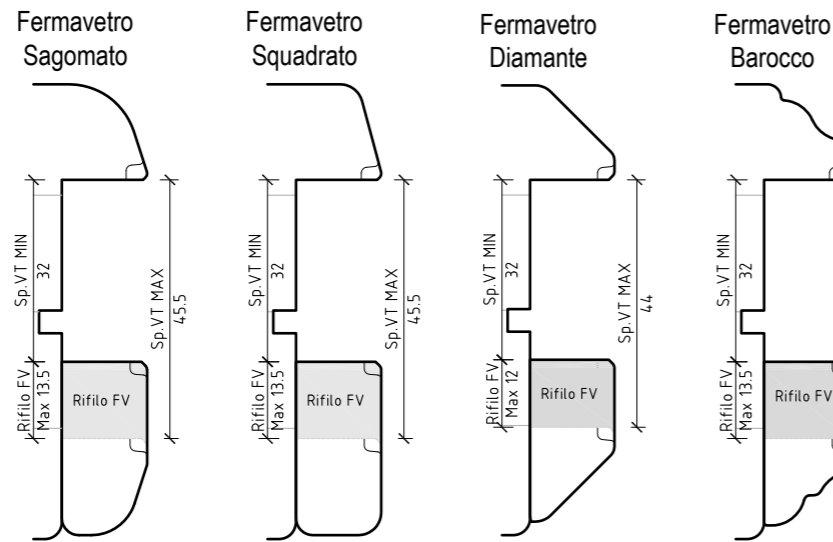


VISTA INTERNA

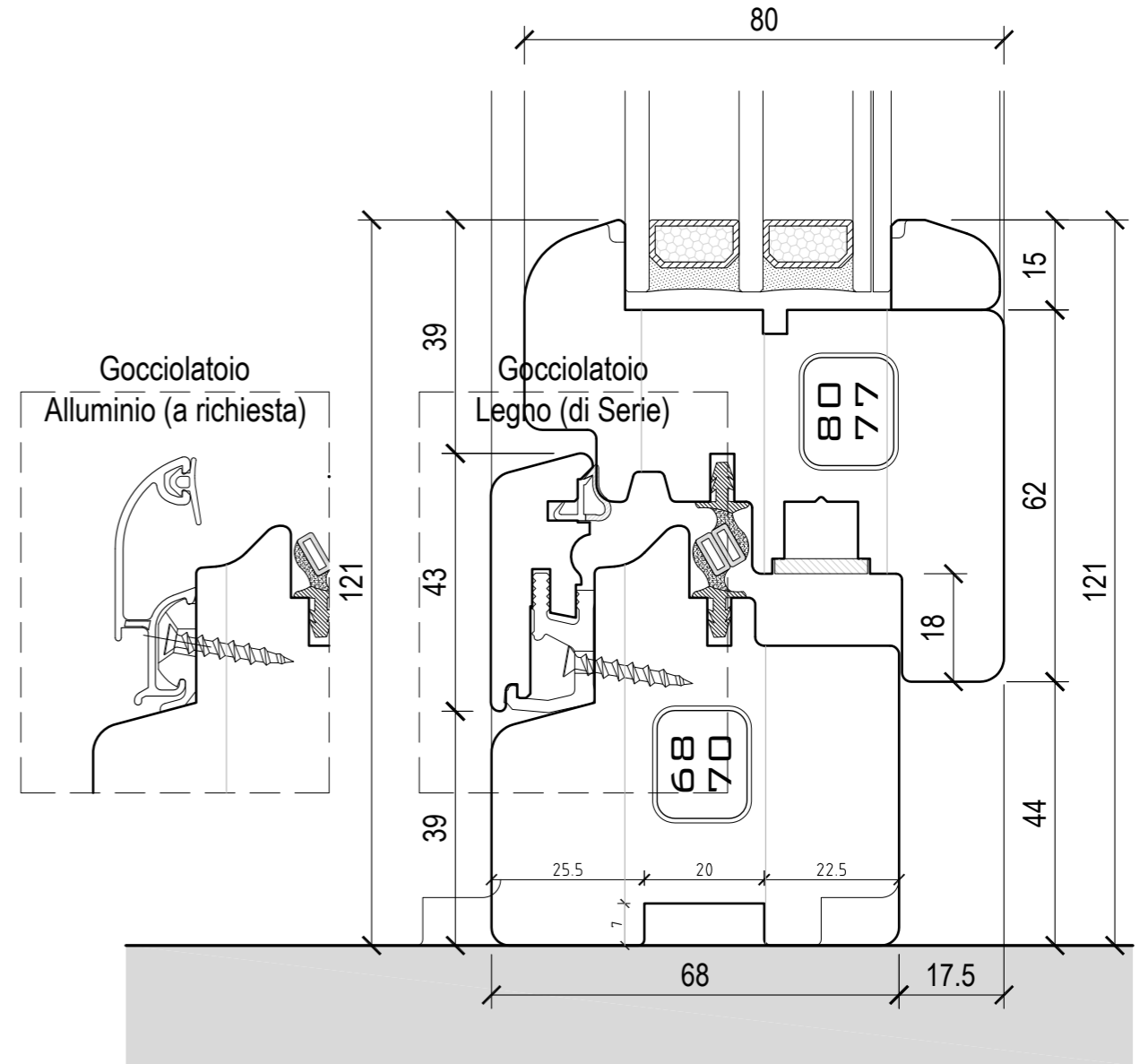
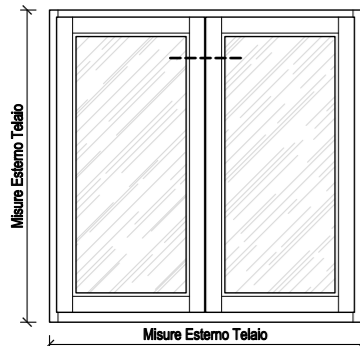




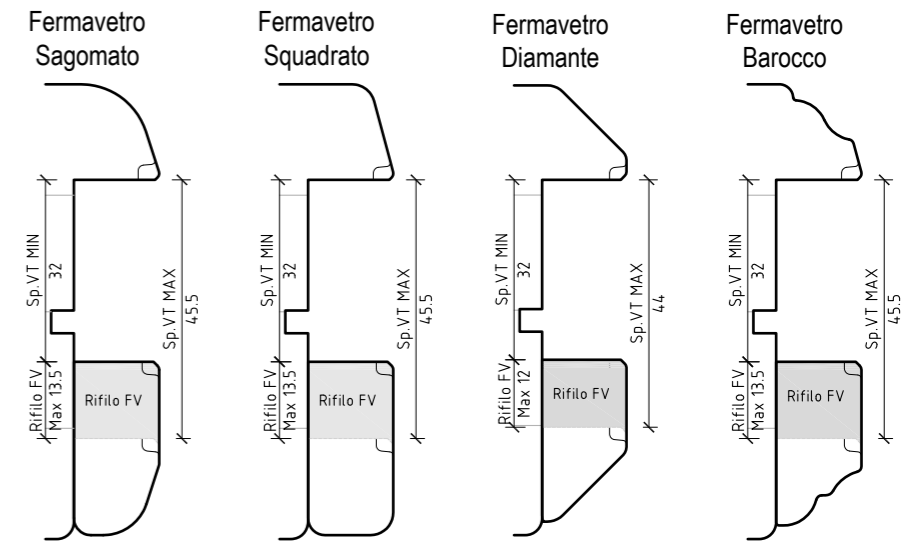
SCELTA TIPO FERMAVETRO



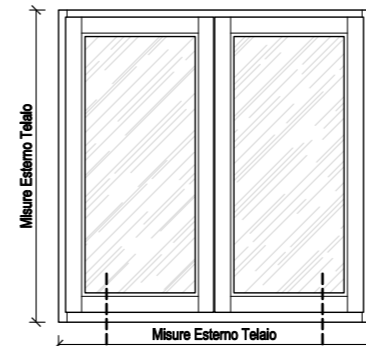
VISTA INTERNA



SCELTA TIPO FERMAVETRO

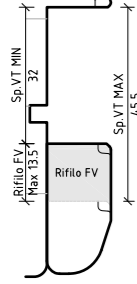


VISTA INTERNA

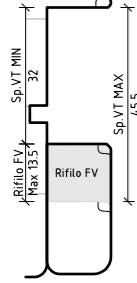


SCELTA
TIPO FERMAVETRO

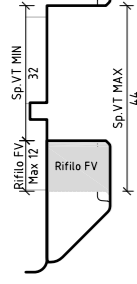
Fermavetro
Sagomato



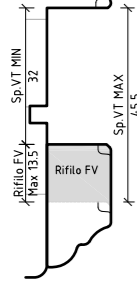
Fermavetro
Squadrato



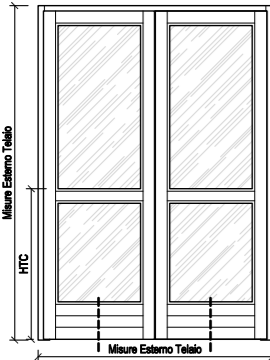
Fermavetro
Diamante



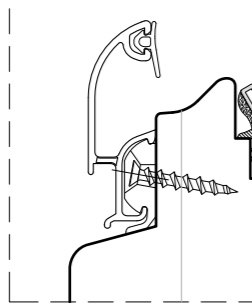
Fermavetro
Barocco



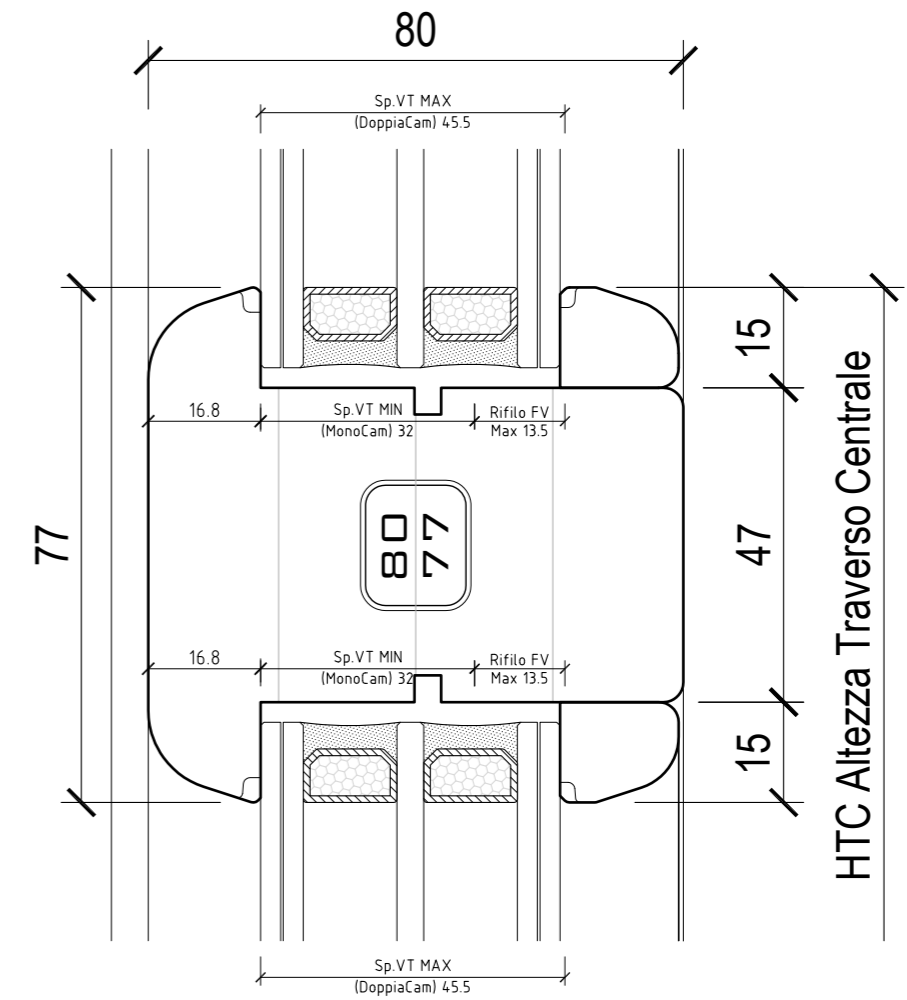
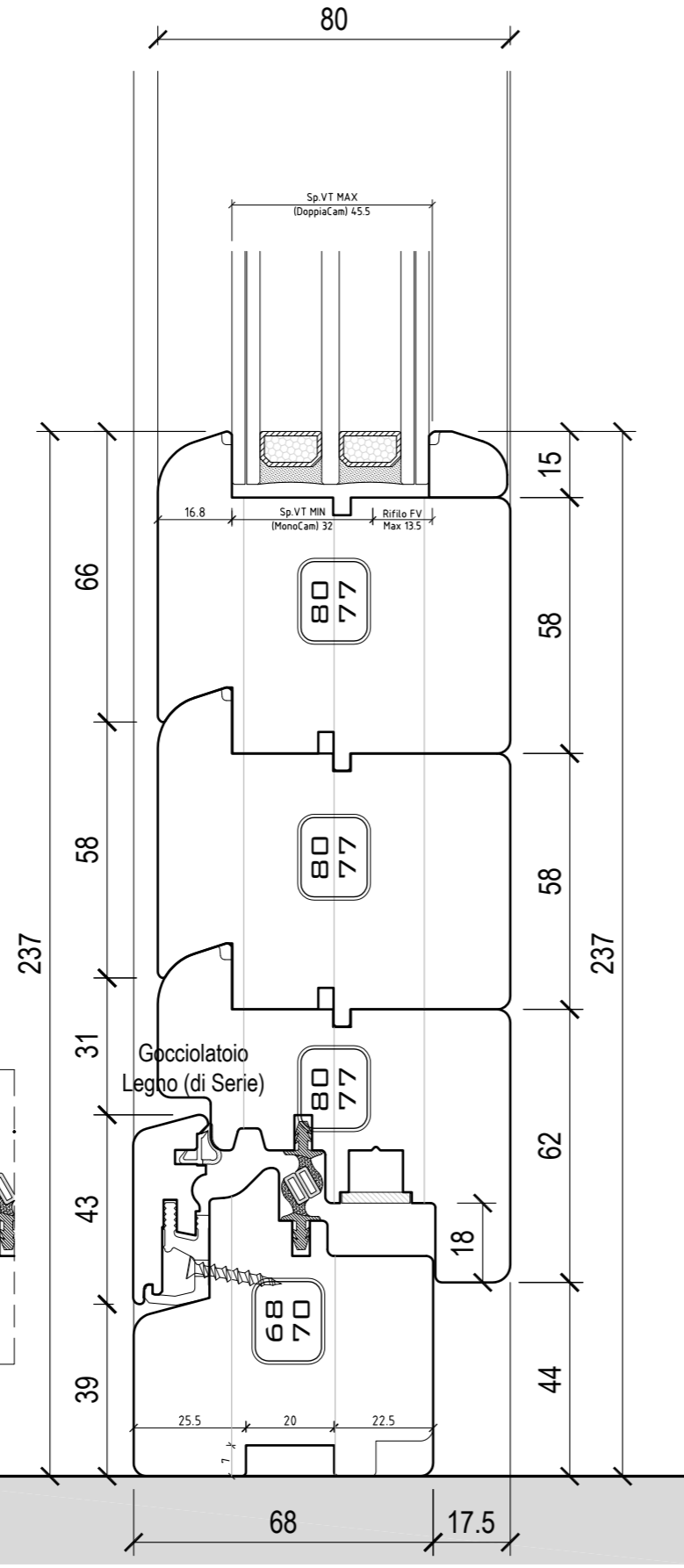
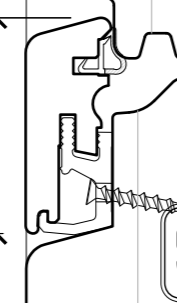
VISTA INTERNA



Gocciolatoio
Alluminio (a richiesta)



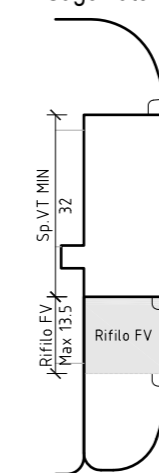
Gocciolatoio
Legno (di Serie)



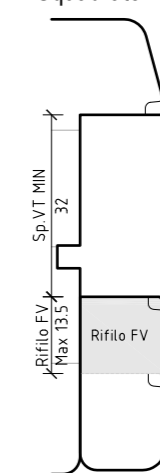
HTC Altezza Traverso Centrale

SCELTA
TIPO FERMAVETRO

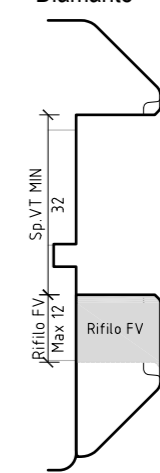
Fermavetro
Sagomato



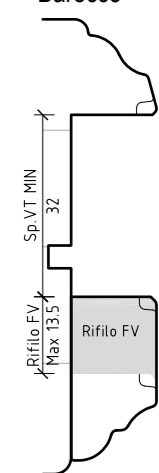
Fermavetro
Squadrato



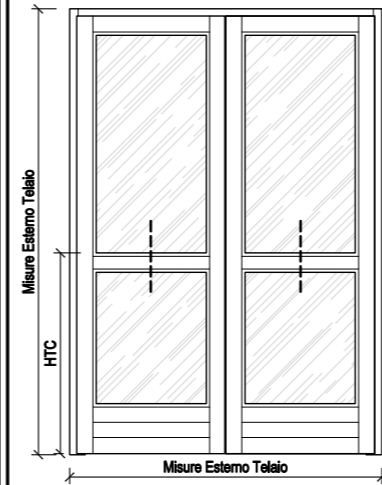
Fermavetro
Diamante

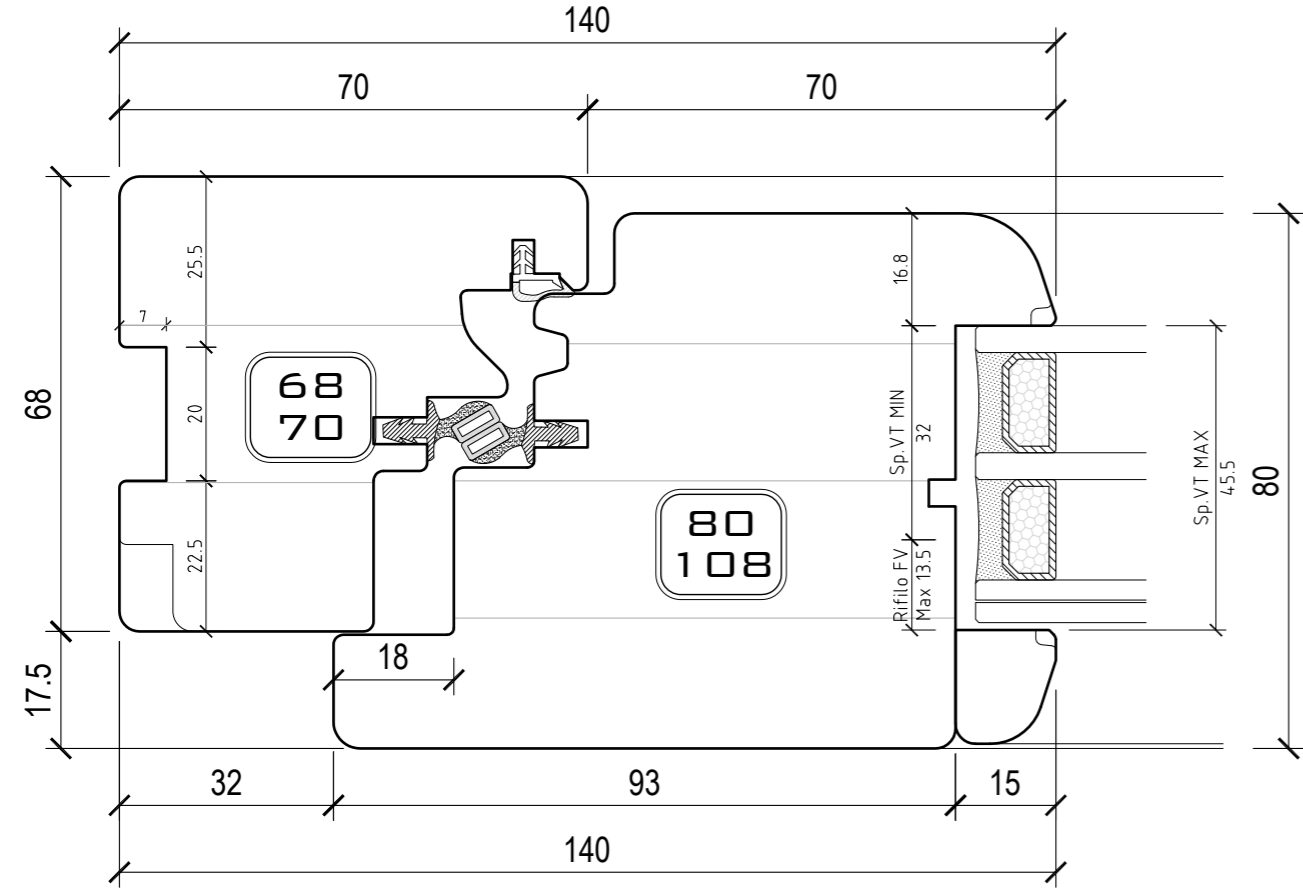


Fermavetro
Barocco

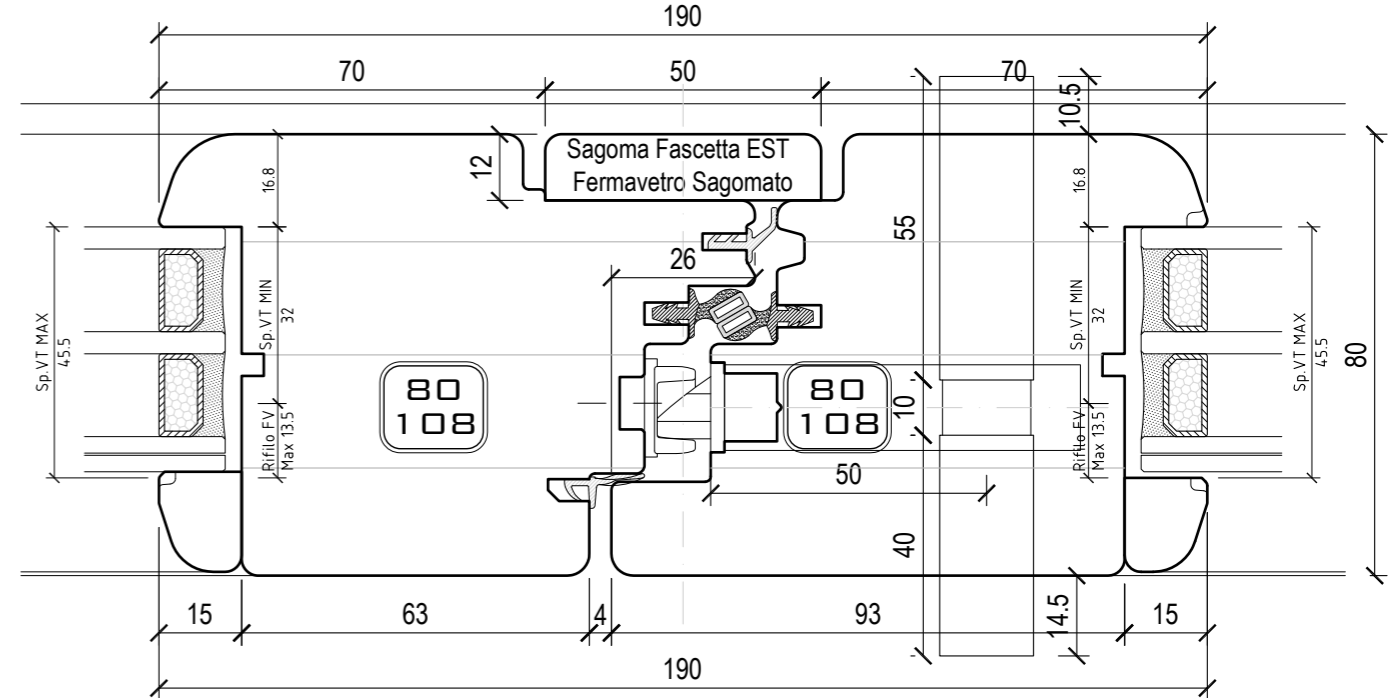
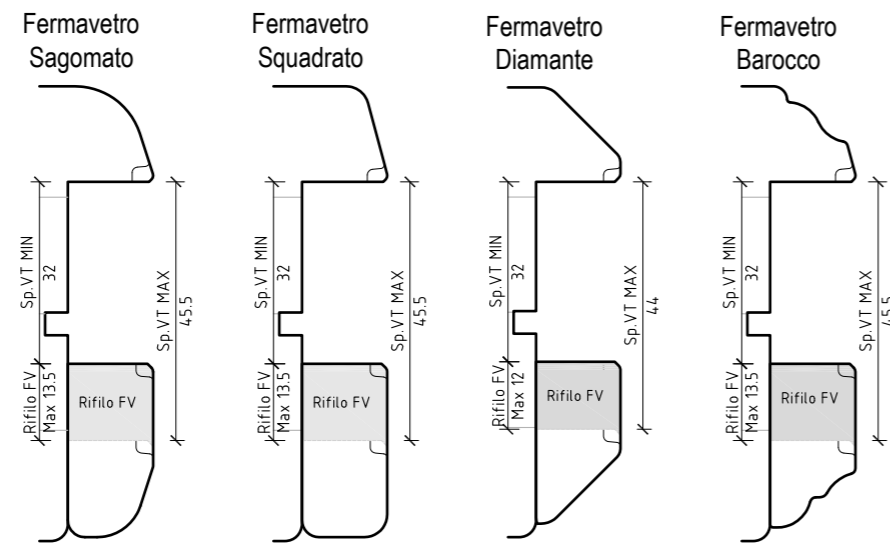
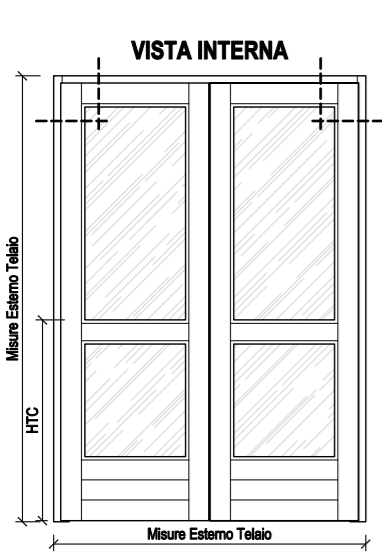


VISTA INTERNA

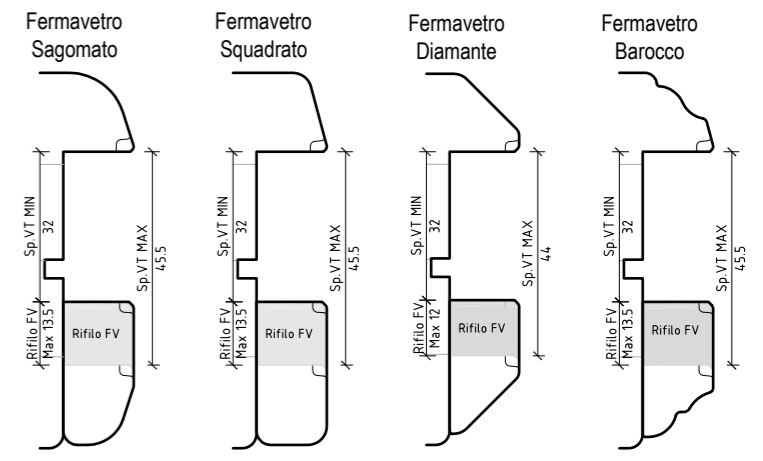
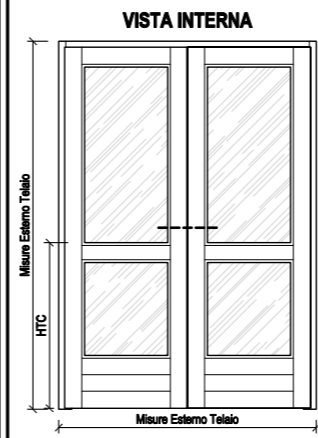




SCELTA TIPO FERMAVETRO



SCELTA TIPO FERMAVETRO



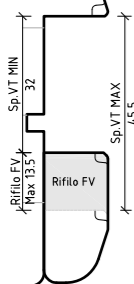
FINNOVA

T70x80Mag A108x80Mag Asse13mm
NODO INFERIORE PORTAFINESTRA
ANTA MAGGIORATA - SOGLIA PS

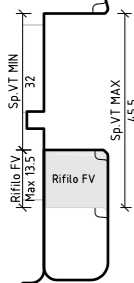
F80M-19
Asse13mm
Tav. LOGOS

SCELTA
TIPO FERMAVETRO

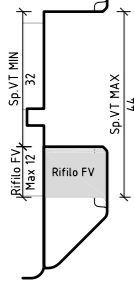
Fermavetro
Sagomato



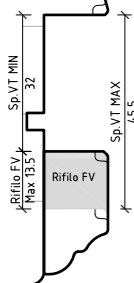
Fermavetro
Squadrato



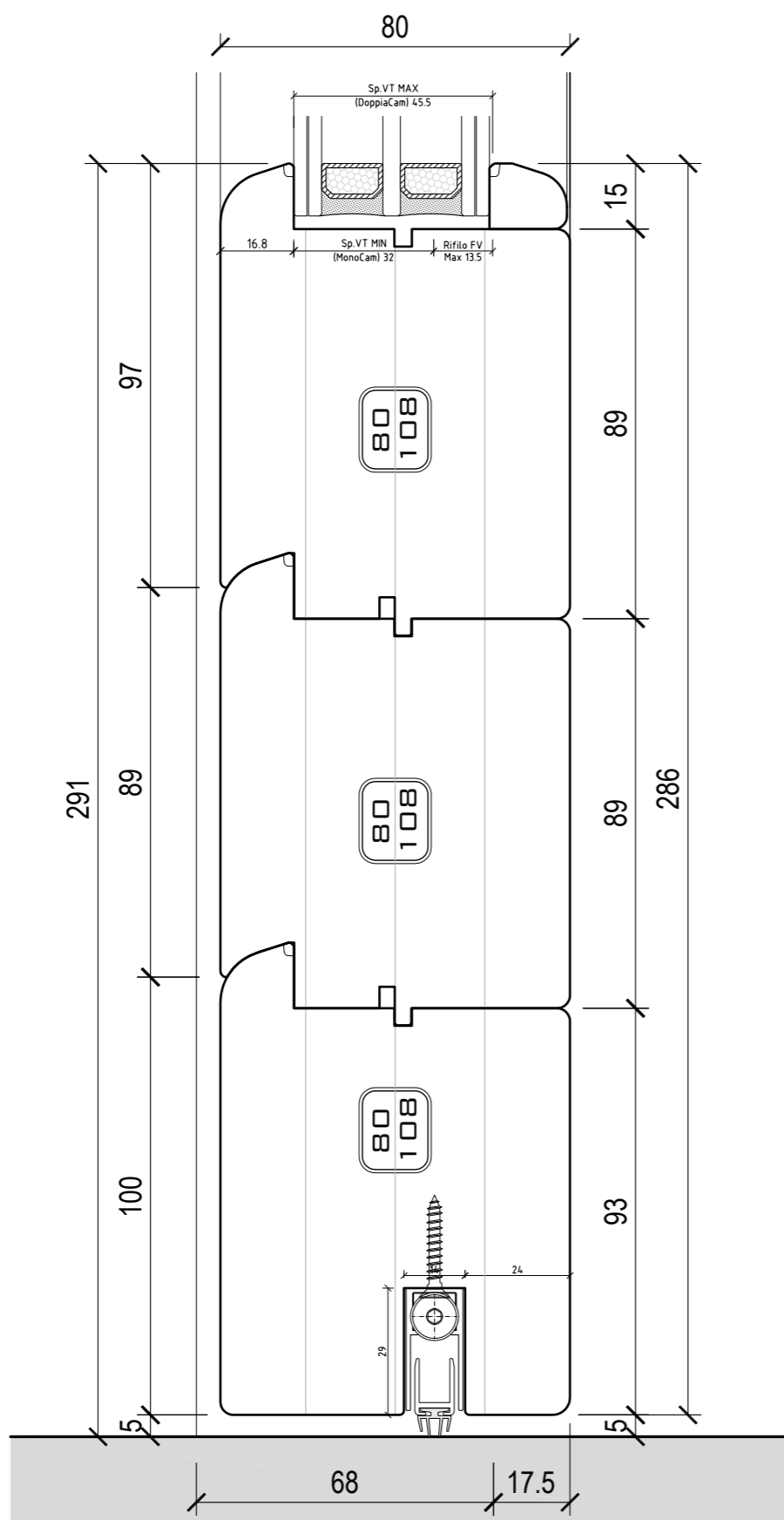
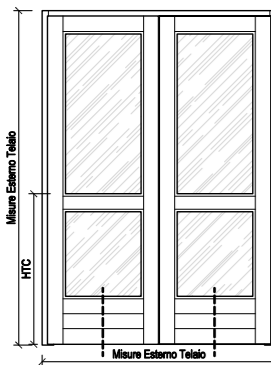
Fermavetro
Diamante



Fermavetro
Barocco



VISTA INTERNA



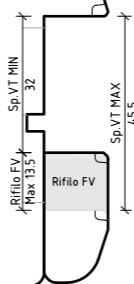
FINNOVA

T70x80Mag A108x80Mag Asse13mm
NODO INFERIORE PORTAFINESTRA
ANTA MAGGIORATA - SOGLIA PF

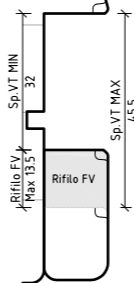
F80M-20
Asse13mm
Tav. LOGOS

SCELTA
TIPO FERMAVETRO

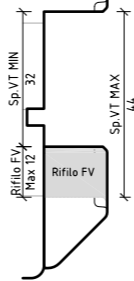
Fermavetro
Sagomato



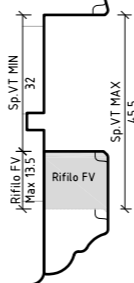
Fermavetro
Squadrato



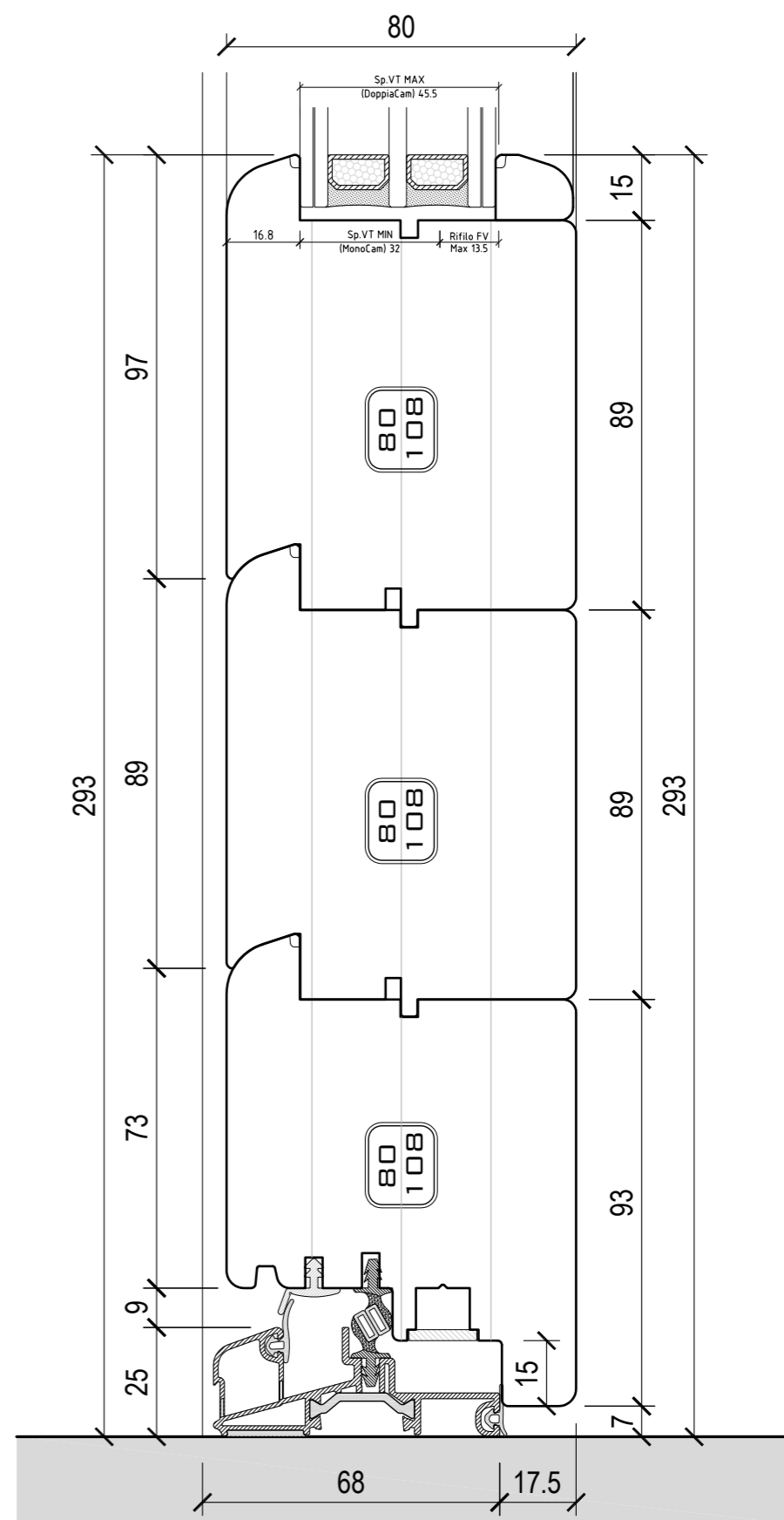
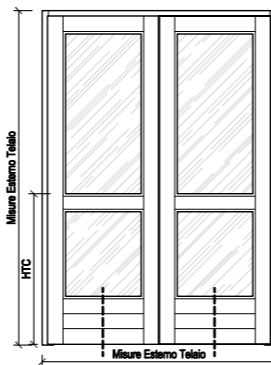
Fermavetro
Diamante

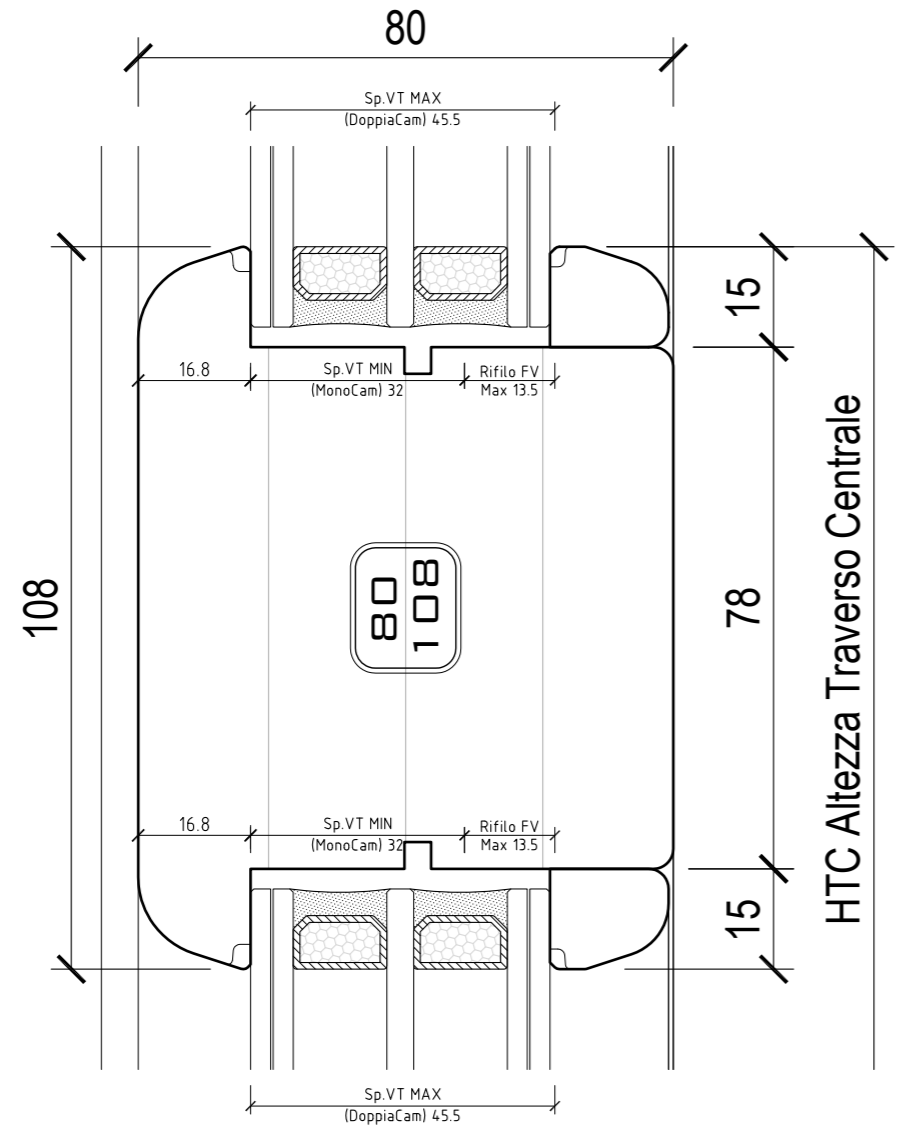


Fermavetro
Barocco



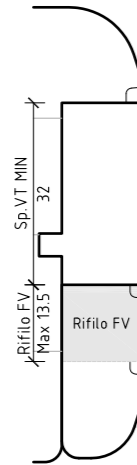
VISTA INTERNA



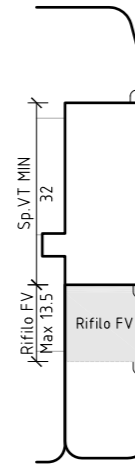


SCELTA TIPO FERMAVETRO

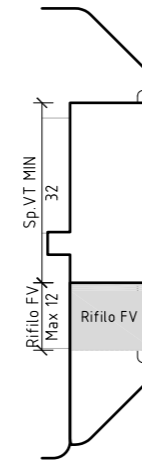
Fermavetro Sagomato



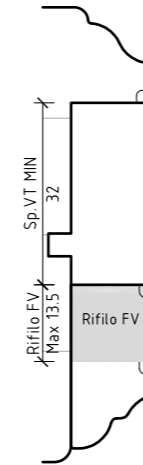
Fermavetro Squadrato



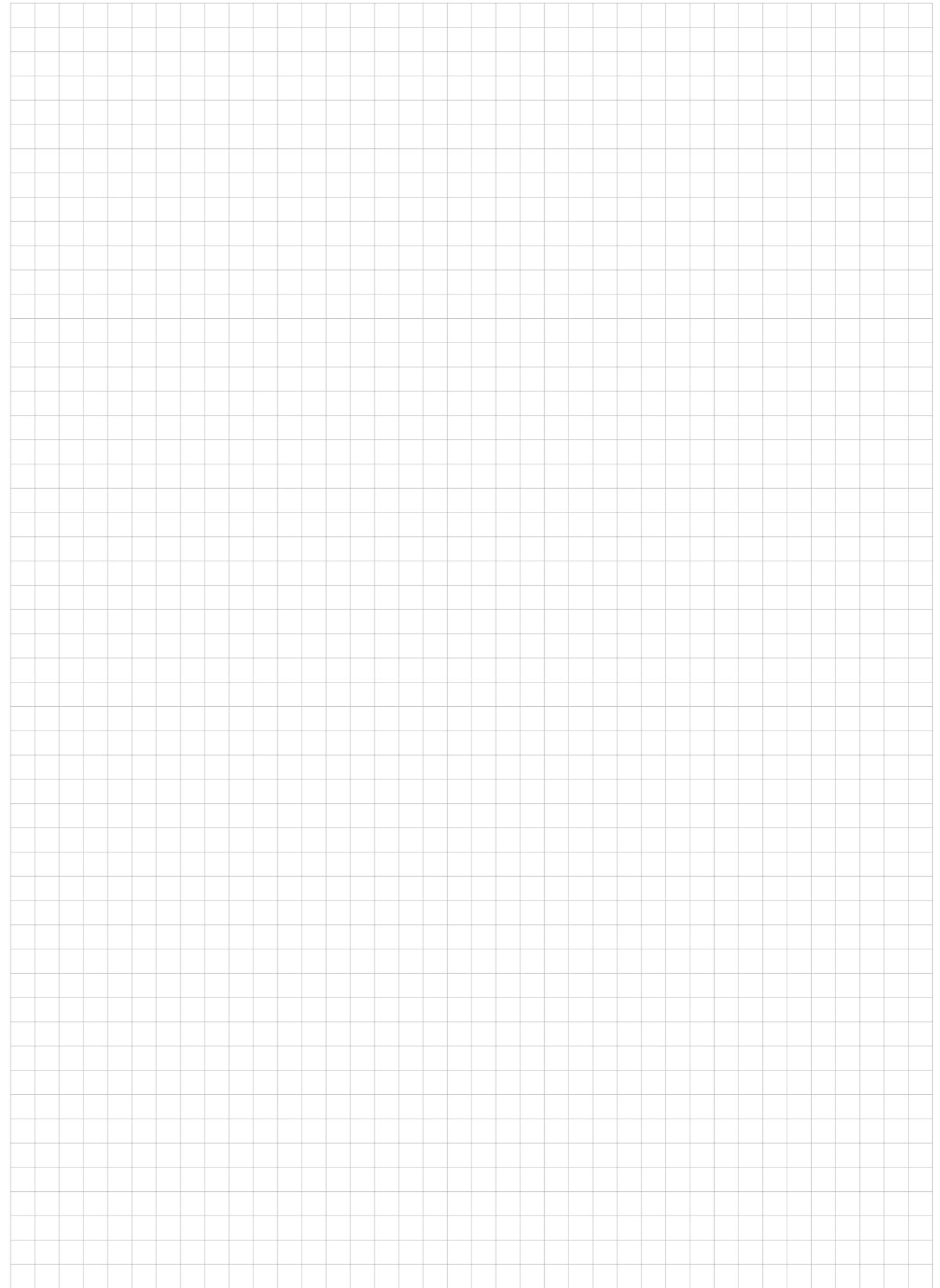
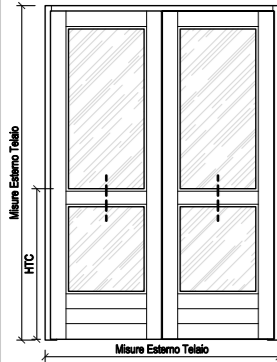
Fermavetro Diamante



Fermavetro Barocco



VISTA INTERNA



MANUALE
TECNICO

F80M



F I N N O V A

Finnova srl

Via dei Prai 4 M/N
31033 Castelfranco Veneto
Treviso - Italy

T +39 0423 453105

F +39 0423 747287

info@finnovasrl.it

finnovasrl.it

